

Photometric Report

SAM0904920004 Track light 15W (WW), , Ordercode

REPORT SUMMARY

Output

Total Lumens:	939 Lumen
Peak Intensity:	1838 candela
Illuminance @ 5m:	74 lx
CRI:	92,6
CCT:	2637 K

Optical

Beam Angle (50%)	39,1 °
Field Angle (10%)	68 °

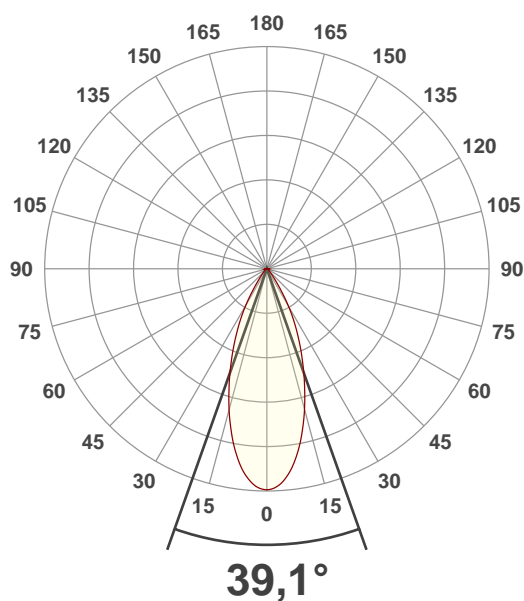
Conditions:

Power Supply:	224 V
Power:	13,7 W
Current:	0,065 A
Power Factor:	0,94

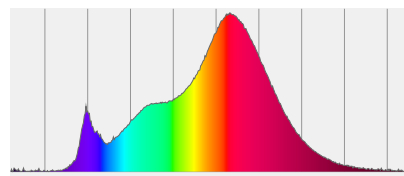


MEASUREMENTS

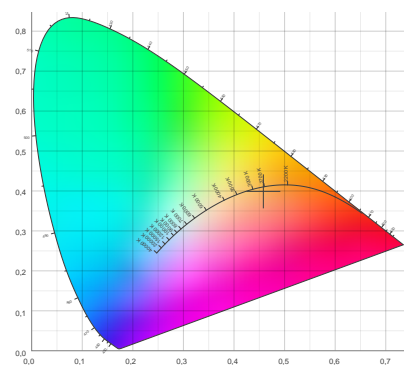
Angular Beam Distribution



Spectral Distribution



CIE 1931

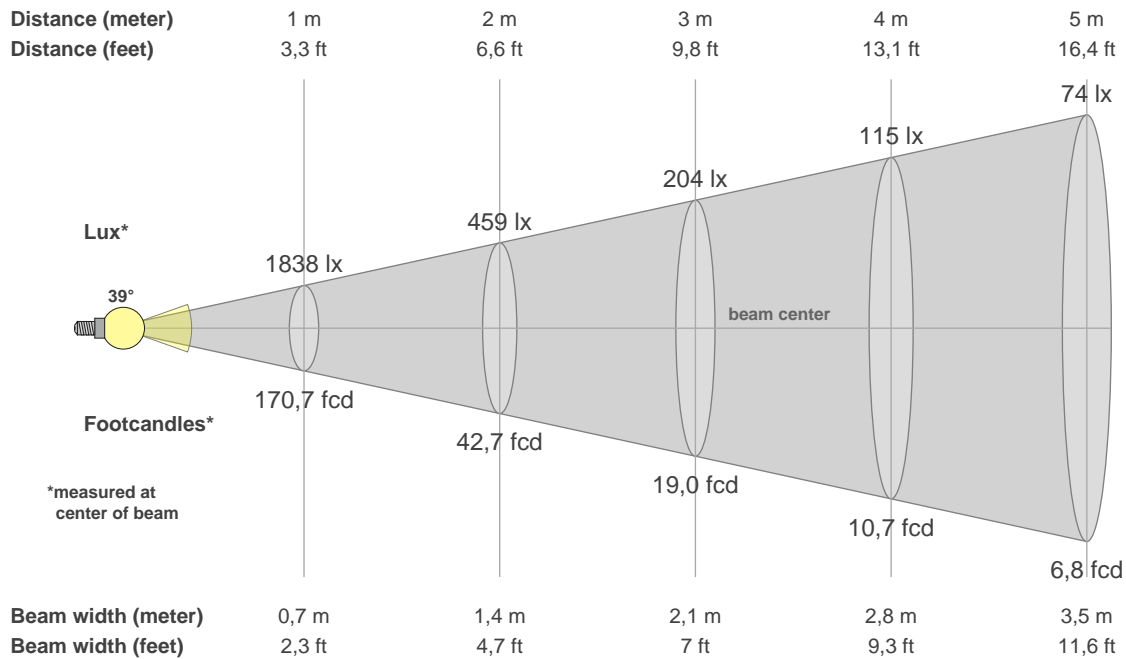


Photometric Report



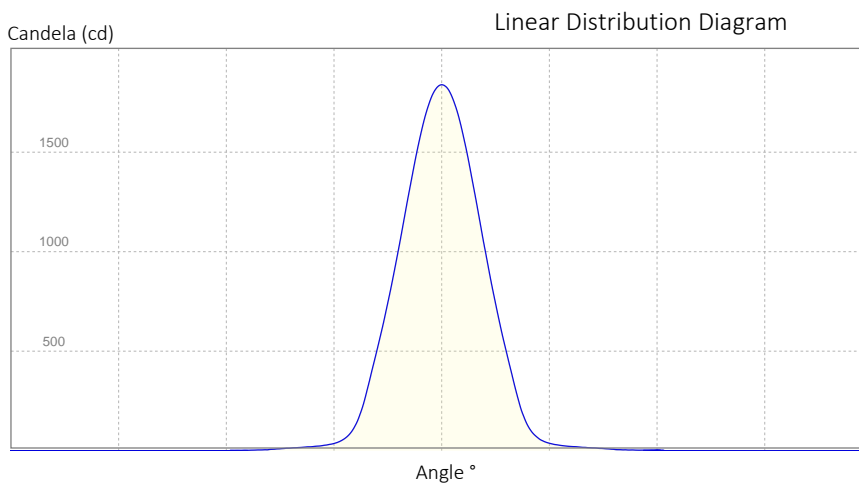
SAM0904920004 Track light 15W (WW), , Ordercode

BEAM DETAILS



Beam Illuminances from 1-20m

1m	2m	3m	4m	5m	6m	7m	8m	9m	10m	11m	12m	13m	14m	15m	16m	17m	18m	19m	20m
3,3ft	6,6ft	9,8ft	13,1ft	16,4ft	19,7ft	23ft	26,2ft	29,5ft	32,8ft	36,1ft	39,4ft	42,7ft	45,9ft	49,2ft	52,5ft	55,8ft	59,1ft	62,3ft	65,6ft
1838lx	459lx	204lx	115lx	74lx	51lx	38lx	29lx	23lx	18lx	15lx	13lx	11lx	9lx	8lx	7lx	6lx	6lx	5lx	5lx
170,7fcd	42,7fcd	19fcd	10,7fcd	6,8fcd	4,7fcd	3,5fcd	2,7fcd	2,1fcd	1,7fcd	1,4fcd	1,2fcd	1fcd	0,9fcd	0,8fcd	0,7fcd	0,6fcd	0,5fcd	0,5fcd	0,4fcd



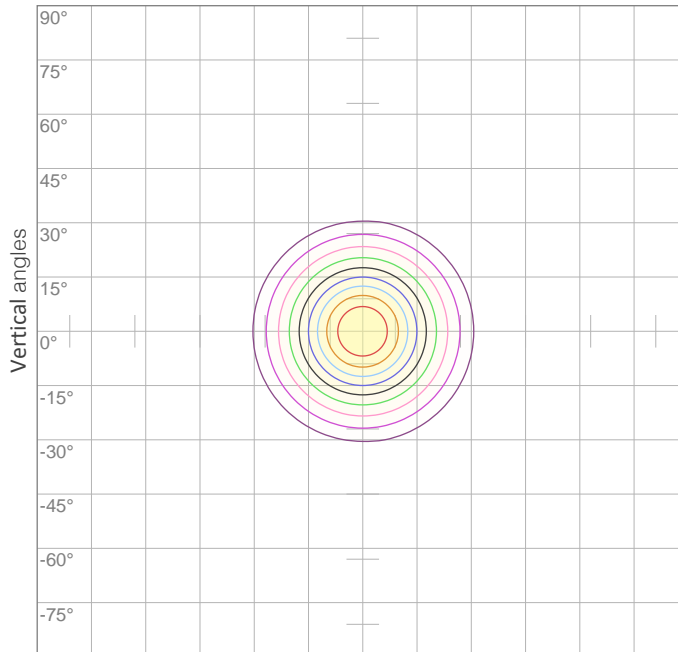
Beam Angle (50%): 39,1 °
 Field Angle (10%): 68 °
 Cutoff Angle (3%): 85,5 °

Photometric Report



SAM0904920004 Track light 15W (WW), , Ordercode

POLAR DIAGRAMS



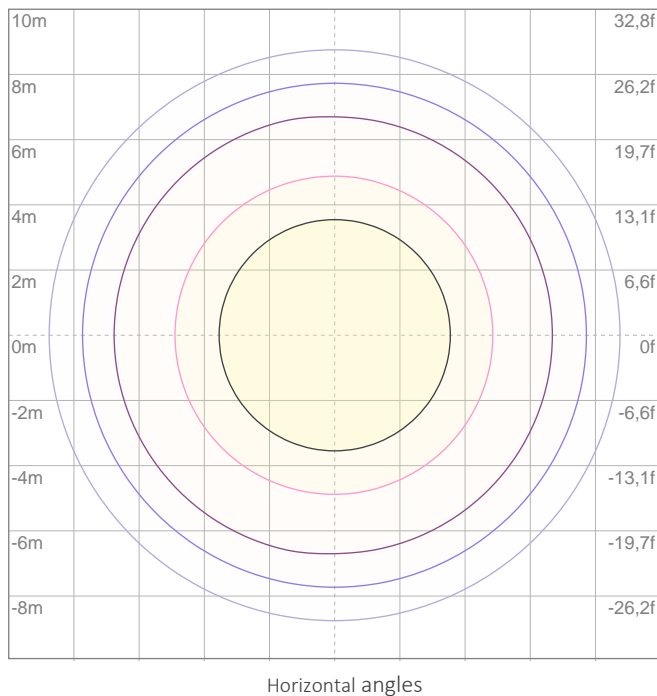
ISO candela diagram

10%	184 cd
20%	368 cd
30%	551 cd
40%	735 cd
50%	919 cd
60%	1103 cd
70%	1287 cd

Conditions:

Number of c-planes: {C_PLANES}

Candela at center: 1838 cd



ISO lux diagram

3%	0,551 lx
5%	0,919 lx
10%	1,84 lx
30%	5,51 lx
50%	9,19 lx

Conditions:

Number of c-planes: 2

Lux at center: 18,4 lx

Lux distribution on a surface when lamp is mounted at 10 meters from the surface.

Mounting height: 10 meters (33 feet)

Photometric Report



SAM0904920004 Track light 15W (WW), , Ordercode

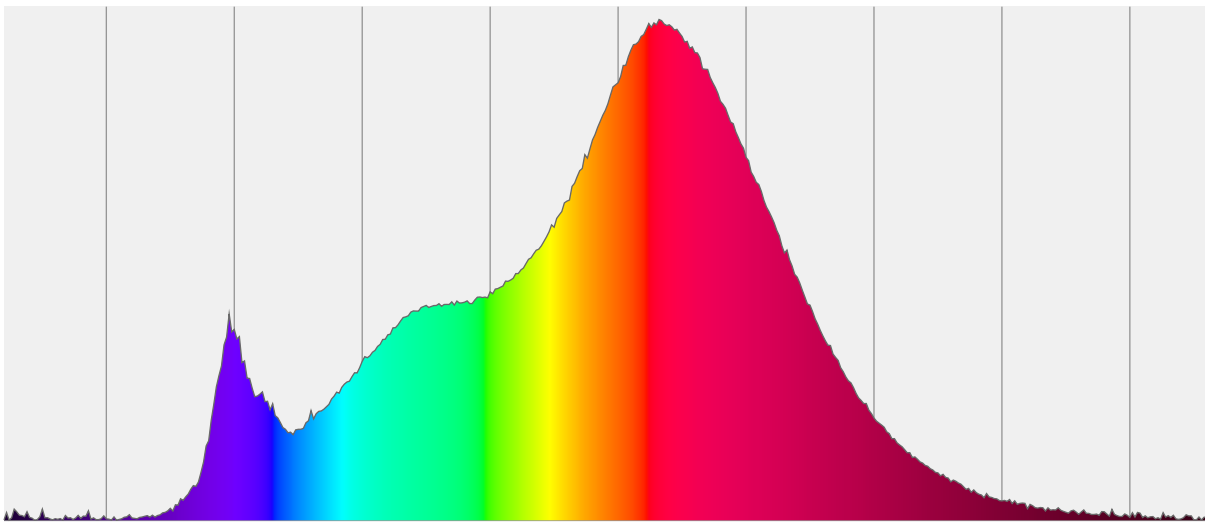
CHROMATICITY REPORT

Total Lumens: 939 lm
Peak Intensity: 1838 cd
Fixture Efficiency: 68 Lumen/Watt

Color Temperature: 2637 K
CRI: 92,6
CRI R9: 56,2
CQS: 90,6
TM-30 Rf: 92,4
TM-30 Rg: 101,3
 Δuv : -0,0042
1st Dominant Wavelength: 616 nm
2nd Dominant Wavelength: 448 nm



Spectral Distribution



Color

2637 K
CIE 1931 Coordinates:
X: 0,458 Y: 0,399

Color Temperature

2637 K

CRI

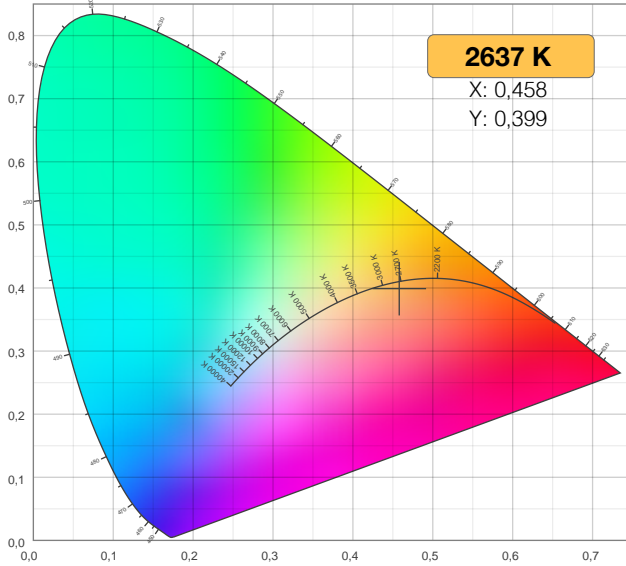
92,6

Photometric Report

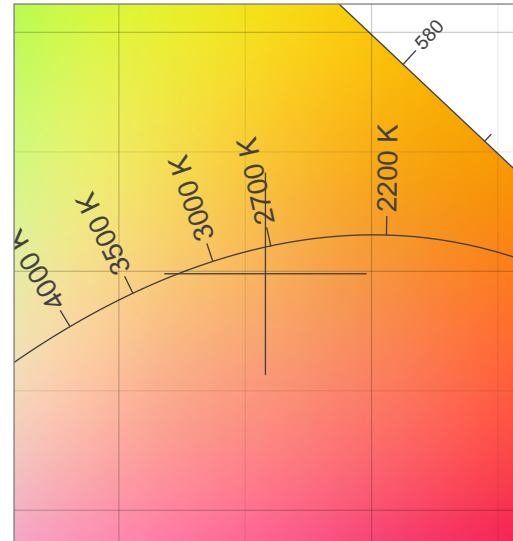
SAM0904920004 Track light 15W (WW), , Ordercode

CHROMATICITY

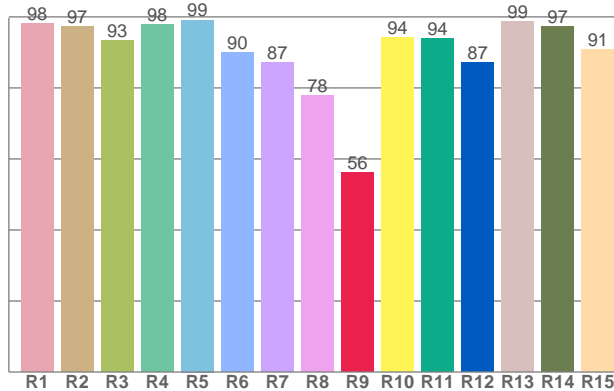
CIE 1931



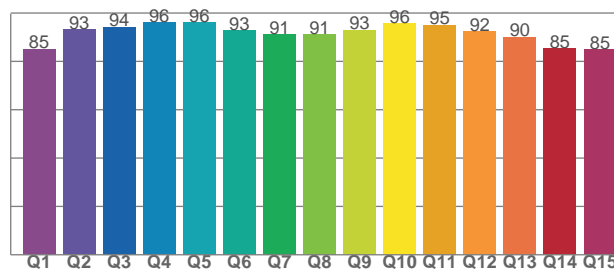
CIE 1931 - Detail



CRI: 92,6 (R1-R8)



CQSI: 90,6



Photometric Report



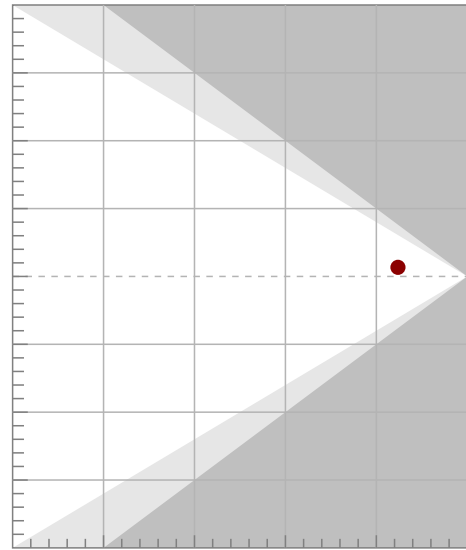
SAM0904920004 Track light 15W (WW), , Ordercode

TM-30-18 DETAILS

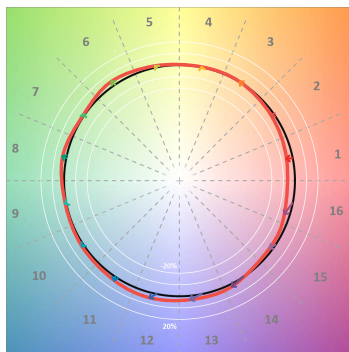
Rf 92,4
Fidelity index Rf

Rg 101,3
Gamut index Rg

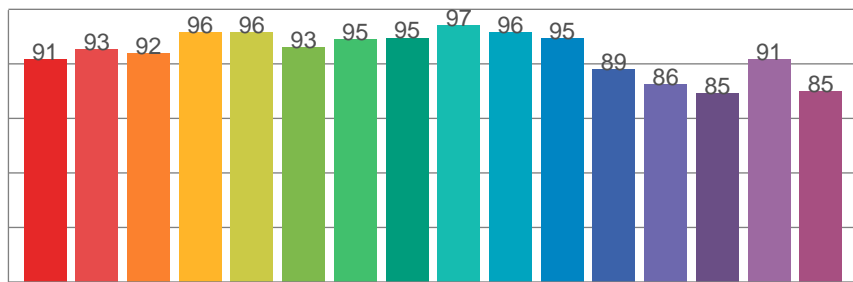
Hue Bin	R _f	Shifts (%)	
		Chroma	Hue
1	91	-5%	0%
2	93	-2%	3%
3	92	0%	4%
4	96	1%	0%
5	96	2%	1%
6	93	4%	1%
7	95	1%	-2%
8	95	3%	-1%
9	97	1%	0%
10	96	2%	1%
11	95	3%	1%
12	89	5%	-5%
13	86	3%	-11%
14	85	2%	-13%
15	91	-2%	-5%
16	85	-5%	-11%



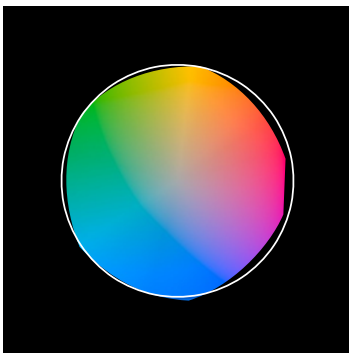
TM30-18 Color Vectors



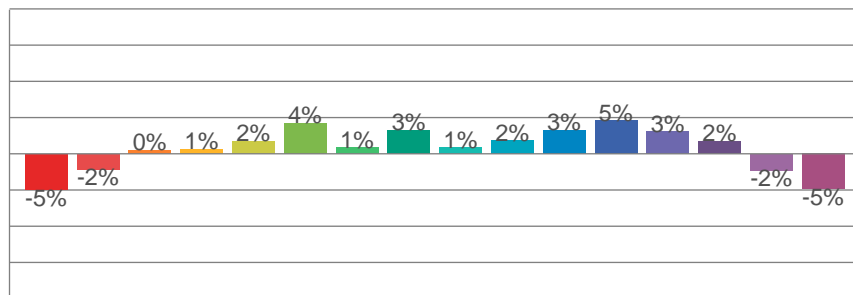
Rf by Hue Bin



TM30 Color Distortion



TM30 Chroma Shift



TM30 Color Fidelity Sample Chart

