

# Photometric Report



33059 - Performer Profile 150 Q6 (R), Zoom: narrow, Ordercode

## REPORT SUMMARY

### Output

Total Lumens:	806 Lumen
Peak Intensity:	5783 candela
Illuminance @ 5m:	231 lx
CRI:	0,0
CCT:	0 K

### Optical

Beam Angle (50%)	24,4 °
Field Angle (10%)	26,7 °

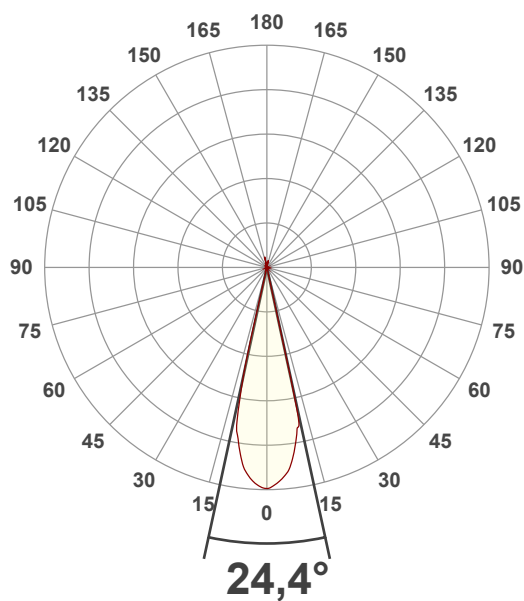
### Conditions:

Power Supply:	227 V
Power:	35,2 W
Current:	0,312 A
Power Factor:	0,5

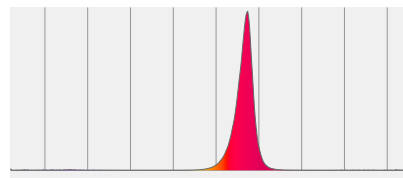


## MEASUREMENTS

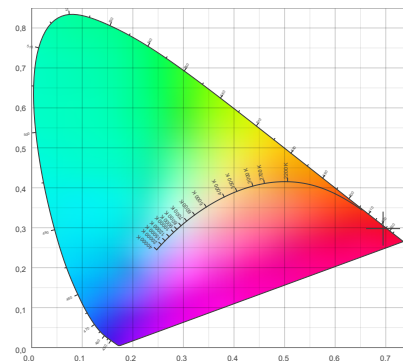
Angular Beam Distribution



Spectral Distribution



CIE 1931

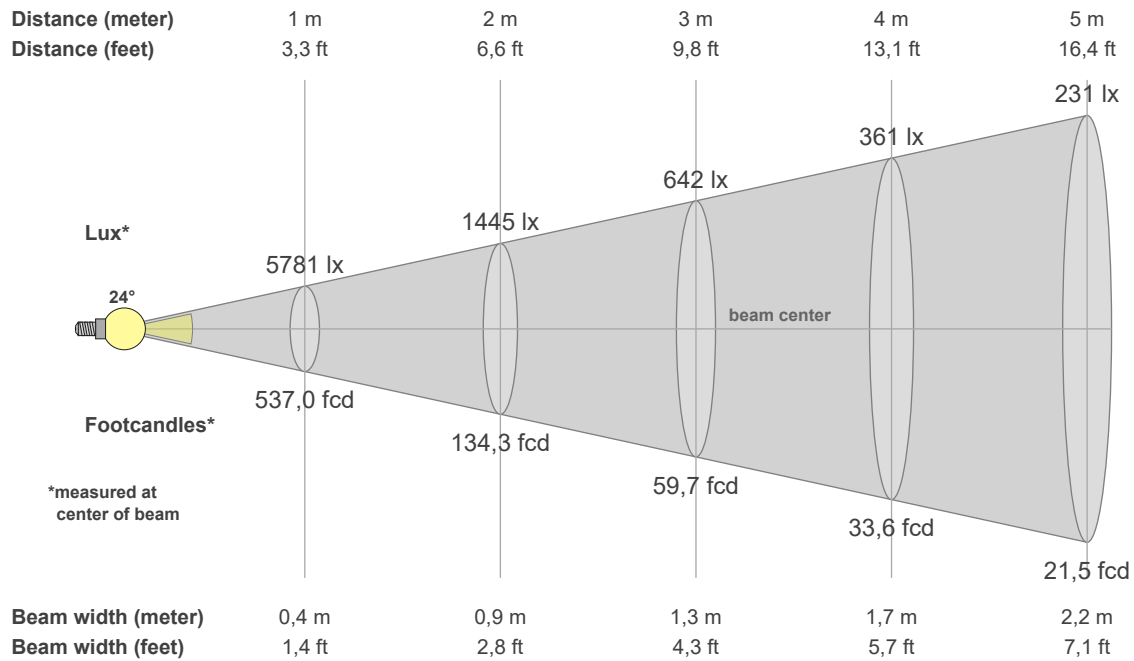


## BEAM DETAILS

# Photometric Report

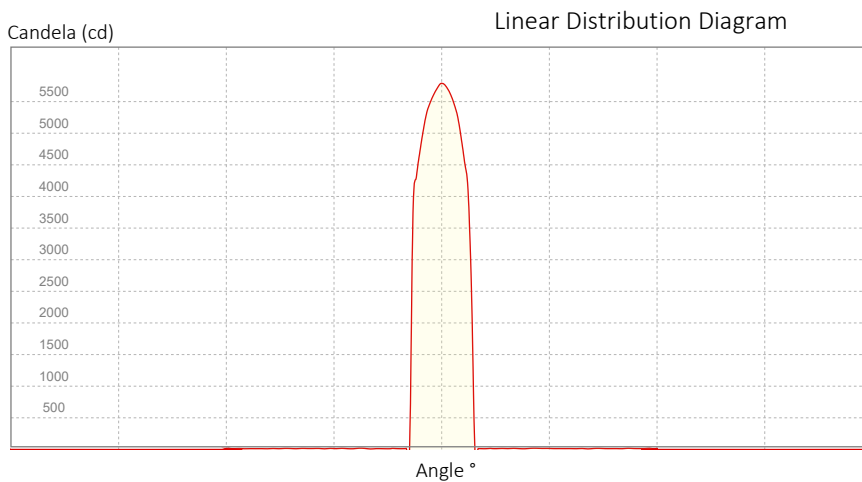


33059 - Performer Profile 150 Q6 (R), Zoom: narrow, Ordercode



## Beam Illuminances from 1-20m

1m	2m	3m	4m	5m	6m	7m	8m	9m	10m	11m	12m	13m	14m	15m	16m	17m	18m	19m	20m
3,3ft	6,6ft	9,8ft	13,1ft	16,4ft	19,7ft	23ft	26,2ft	29,5ft	32,8ft	36,1ft	39,4ft	42,7ft	45,9ft	49,2ft	52,5ft	55,8ft	59,1ft	62,3ft	65,6ft
5781lx	1445lx	642lx	361lx	231lx	161lx	118lx	90lx	71lx	58lx	48lx	40lx	34lx	29lx	26lx	23lx	20lx	18lx	16lx	14lx
537fcd	134,3fcd	59,7fcd	33,6fcd	21,5fcd	14,9fcd	11fcd	8,4fcd	6,6fcd	5,4fcd	4,4fcd	3,7fcd	3,2fcd	2,7fcd	2,4fcd	2,1fcd	1,9fcd	1,7fcd	1,5fcd	1,3fcd



Beam Angle (50%): 24,4 °  
 Field Angle (10%): 26,7 °  
 Cutoff Angle (3%): 27,1 °

## POLAR DIAGRAMS

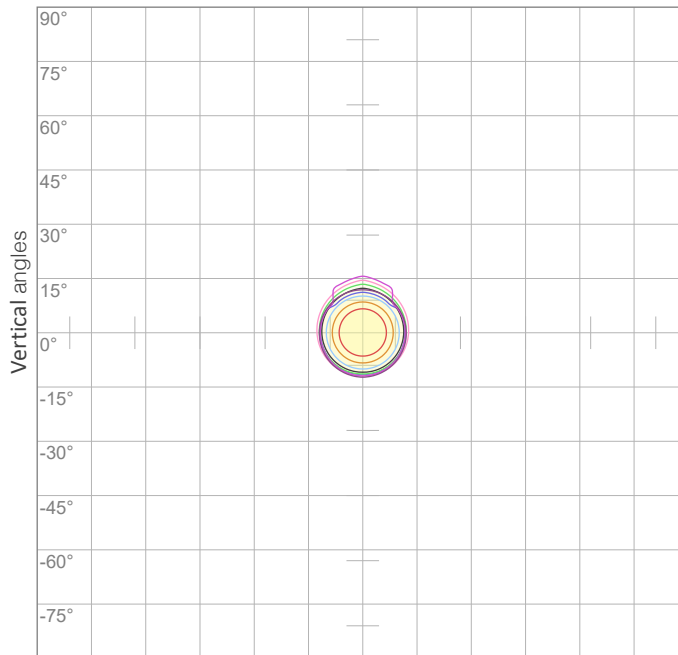
### ISO candela diagram

All product specifications, measurements, values and dimensions are subject to change without prior notice

# Photometric Report



33059 - Performer Profile 150 Q6 (R), Zoom: narrow, Ordercode

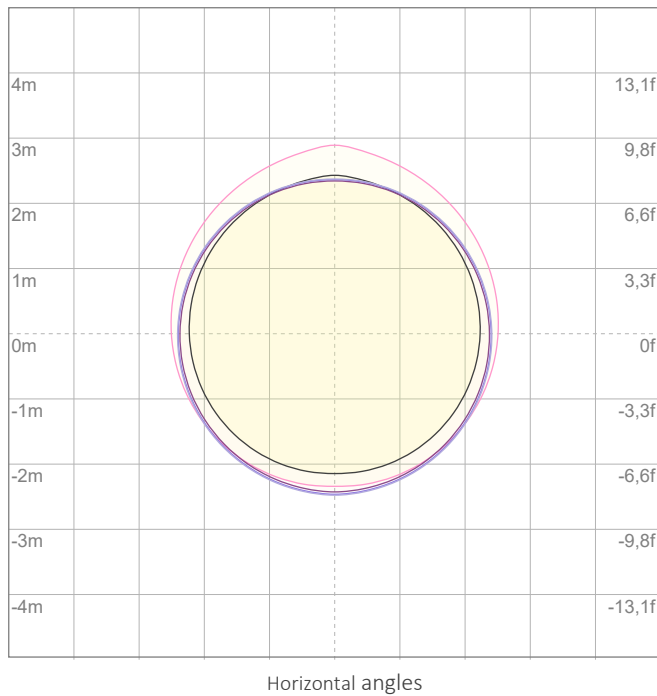


10%	578 cd
20%	1156 cd
30%	1734 cd
40%	2312 cd
50%	2890 cd
60%	3468 cd
70%	4046 cd

Conditions:

Number of c-planes: {C\_PLANES}

Candela at center: 5781 cd



## ISO lux diagram

3%	1,73 lx
5%	2,89 lx
10%	5,78 lx
30%	17,3 lx
50%	28,9 lx

Conditions:

Number of c-planes: 2

Lux at center: 57,8 lx

*Lux distribution on a surface when lamp is mounted at 10 meters from the surface.*

Mounting height: 10 meters (33 feet)

## CHROMATICITY REPORT



# Photometric Report

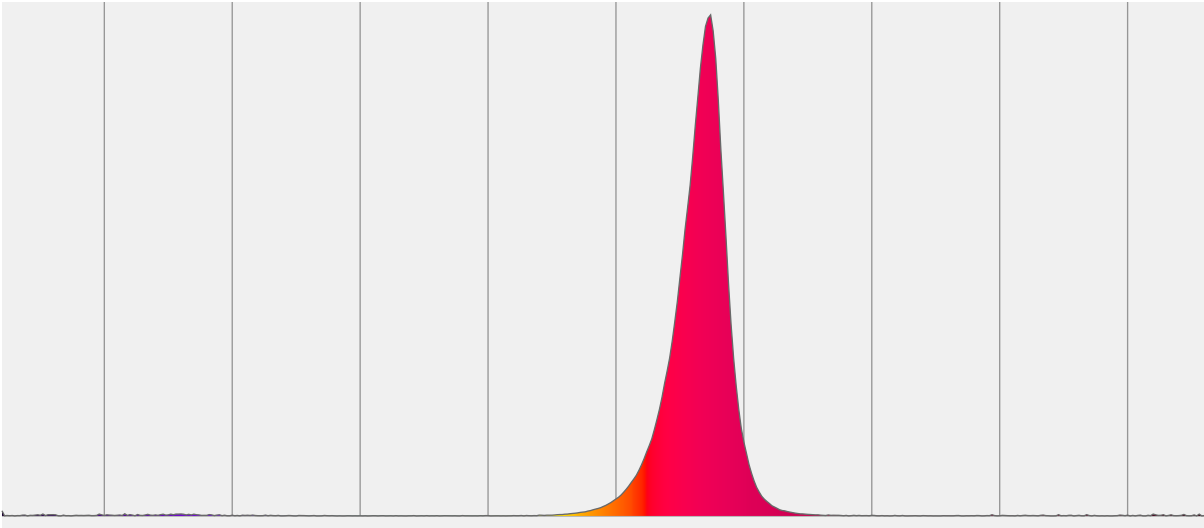
33059 - Performer Profile 150 Q6 (R), Zoom: narrow, Ordercode

Total Lumens: 806 lm  
Peak Intensity: 5783 cd  
Fixture Efficiency: 23 Lumen/Watt

Color Temperature: 0 K  
CRI: 0,0  
CRI R9: 0,0  
CQS: 0,0  
TM-30 Rf: 0,0  
TM-30 Rg: 0,0  
 $\Delta uv$ : n/a  
1<sup>st</sup> Dominant Wavelength: 637 nm  
2<sup>nd</sup> Dominant Wavelength: n/a nm



Spectral Distribution



**Color**

**0 K**  
CIE 1931 Coordinates:  
X: 0,695 Y: 0,298

**Color Temperature**

0 K

**CRI**

0,0

## CHROMATICITY

CIE 1931 - Detail

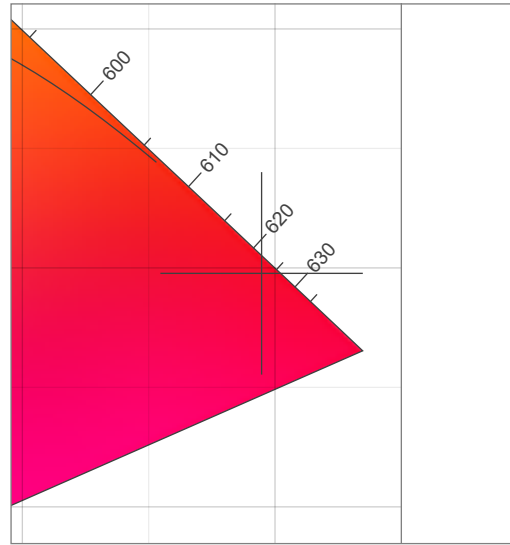
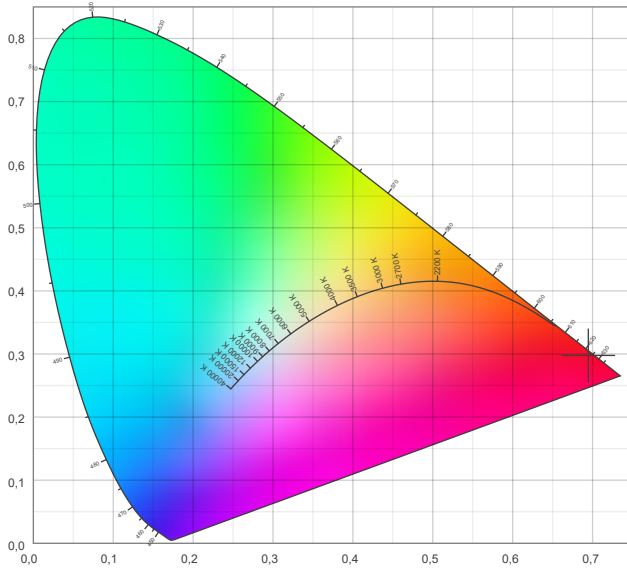
0 K

All product specifications, measurements, values and dimensions are subject to change without prior notice  
X: 0,695  
Y: 0,298

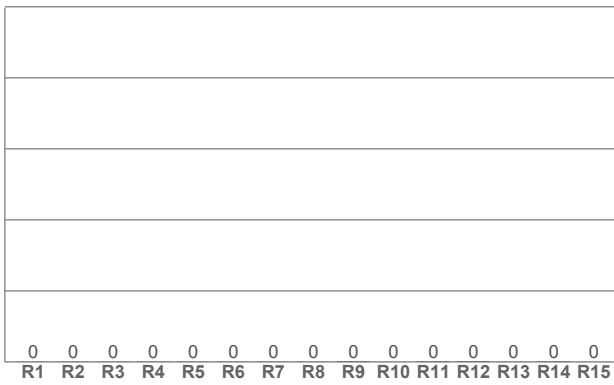
# Photometric Report

33059 - Performer Profile 150 Q6 (R), Zoom: narrow, Ordercode

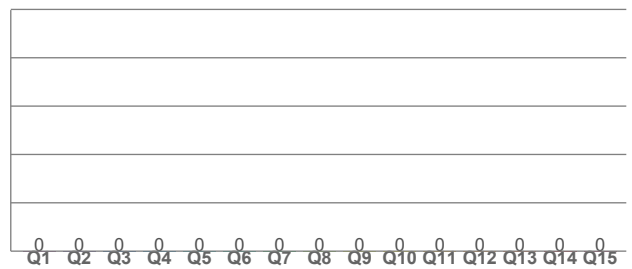
CIE 1931



CRI: 0,0 (R1-R8)



CQSI: 0,0



TM-30-18 DETAILS

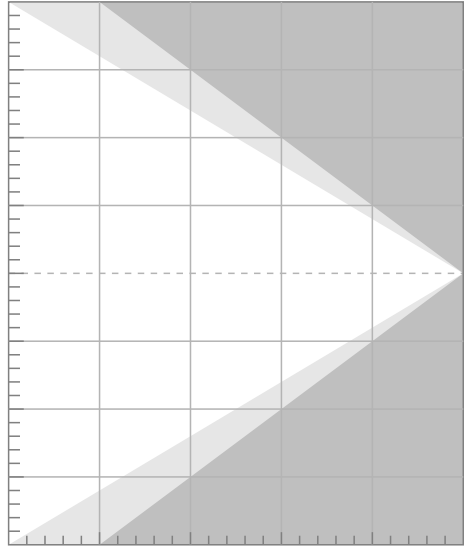
# Photometric Report

33059 - Performer Profile 150 Q6 (R), Zoom: narrow, Ordercode

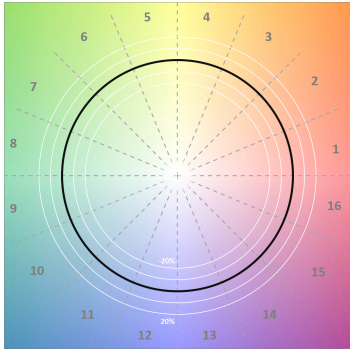
**Rf 0,0**  
Fidelity index Rf

**Rg 0,0**  
Gamut index Rg

Hue Bin	Rf	Shifts (%)	
		Chroma	Hue
1	0	0%	0%
2	0	0%	0%
3	0	0%	0%
4	0	0%	0%
5	0	0%	0%
6	0	0%	0%
7	0	0%	0%
8	0	0%	0%
9	0	0%	0%
10	0	0%	0%
11	0	0%	0%
12	0	0%	0%
13	0	0%	0%
14	0	0%	0%
15	0	0%	0%
16	0	0%	0%

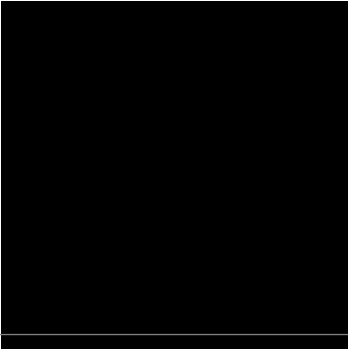


**TM30-18 Color Vectors**



**Rf by Hue Bin**


**TM30 Color Distortion**



**TM30 Chroma Shift**


**TM30 Color Fidelity Sample Chart**


CE511 CE512 CE513 CE514 CE515 CE516 CE517 CE518 CE519 CE520 CE521 CE522 CE523 CE524 CE525 CE526 CE527 CE528 CE529 CE530 CE531 CE532 CE533 CE534 CE535 CE536 CE537 CE538 CE539 CE540 CE541 CE542 CE543 CE544 CE545 CE546 CE547 CE548 CE549 CE550 CE551 CE552 CE553 CE554 CE555 CE556 CE557 CE558 CE559 CE560 CE561 CE562 CE563 CE564 CE565 CE566 CE567 CE568 CE569 CE570 CE571 CE572 CE573 CE574 CE575 CE576 CE577 CE578 CE579 CE580 CE581 CE582 CE583 CE584 CE585 CE586 CE587 CE588 CE589 CE590 CE591 CE592 CE593 CE594 CE595 CE596 CE597 CE598 CE599