

Photometric Report



33059 - Performer Profile 150 Q6 (L), Zoom: narrow, Ordercode

REPORT SUMMARY

Output

Total Lumens: 1998 Lumen
Peak Intensity: 15641 candela
Illuminance @ 5m: 625 lx
CRI: 0,0
CCT: 0 K

Optical

Beam Angle (50%) 24,5 °
Field Angle (10%) 26,4 °

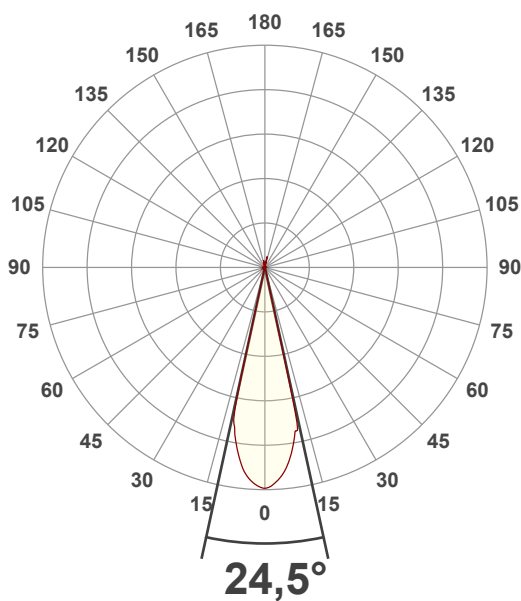
Conditions:

Power Supply: 227 V
Power: 47,0 W
Current: 0,360 A
Power Factor: 0,58

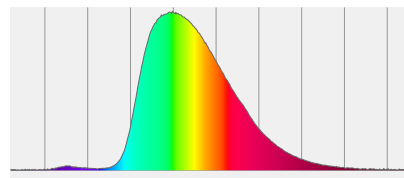


MEASUREMENTS

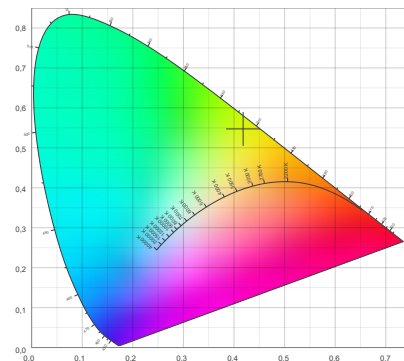
Angular Beam Distribution



Spectral Distribution



CIE 1931

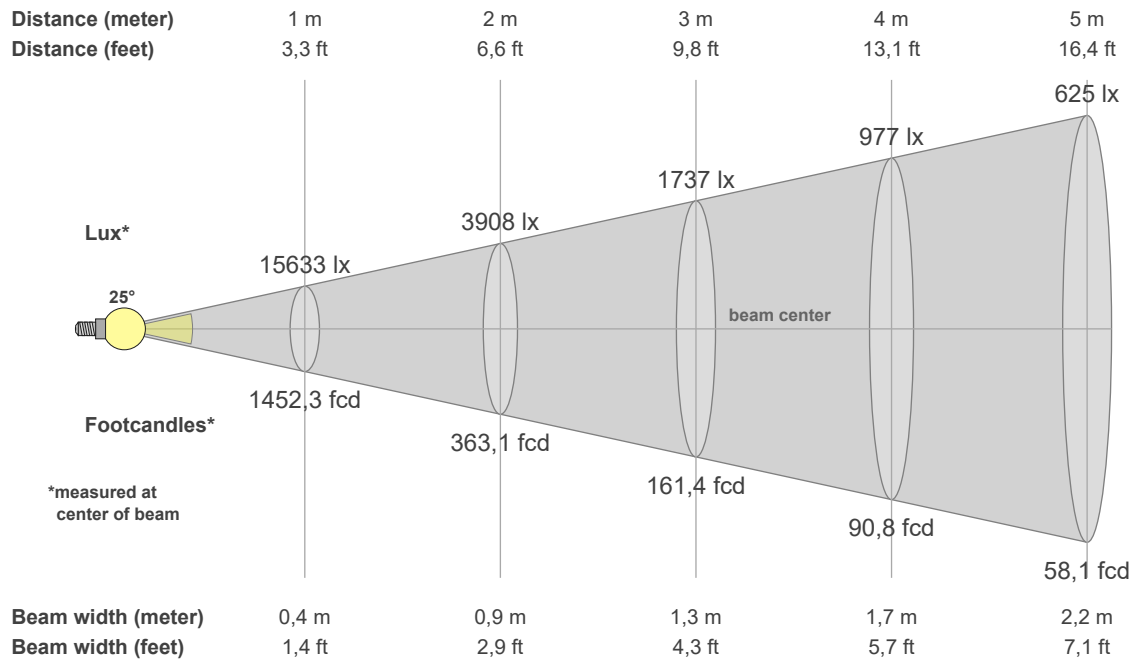


BEAM DETAILS

Photometric Report

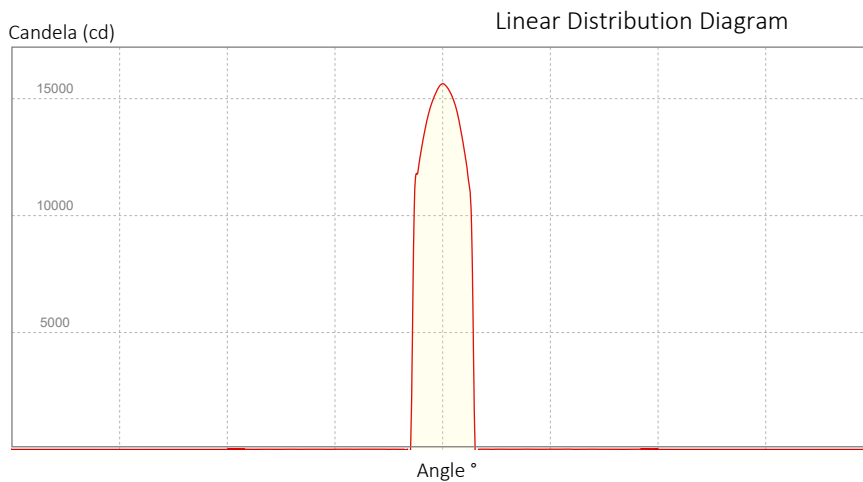


33059 - Performer Profile 150 Q6 (L), Zoom: narrow, Ordercode



Beam Illuminances from 1-20m

1m	2m	3m	4m	5m	6m	7m	8m	9m	10m	11m	12m	13m	14m	15m	16m	17m	18m	19m	20m
3,3ft	6,6ft	9,8ft	13,1ft	16,4ft	19,7ft	23ft	26,2ft	29,5ft	32,8ft	36,1ft	39,4ft	42,7ft	45,9ft	49,2ft	52,5ft	55,8ft	59,1ft	62,3ft	65,6ft
15633lx	3908lx	1737lx	977lx	625lx	434lx	319lx	244lx	193lx	156lx	129lx	109lx	93lx	80lx	69lx	61lx	54lx	48lx	43lx	39lx
1452,3fcd	363,1fcd	161,4fcd	90,8fcd	58,1fcd	40,3fcd	29,6fcd	22,7fcd	17,9fcd	14,5fcd	12fcd	10,1fcd	8,6fcd	7,4fcd	6,5fcd	5,7fcd	5fcd	4,5fcd	4fcd	3,6fcd



Beam Angle (50%): 24,5 °
 Field Angle (10%): 26,4 °
 Cutoff Angle (3%): 26,8 °

POLAR DIAGRAMS

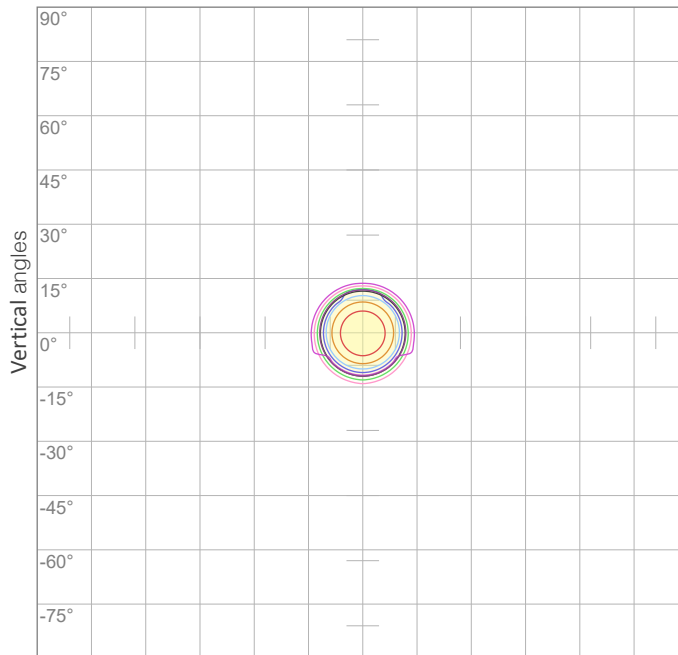
ISO candela diagram

All product specifications, measurements, values and dimensions are subject to change without prior notice

Photometric Report



33059 - Performer Profile 150 Q6 (L), Zoom: narrow, Ordercode

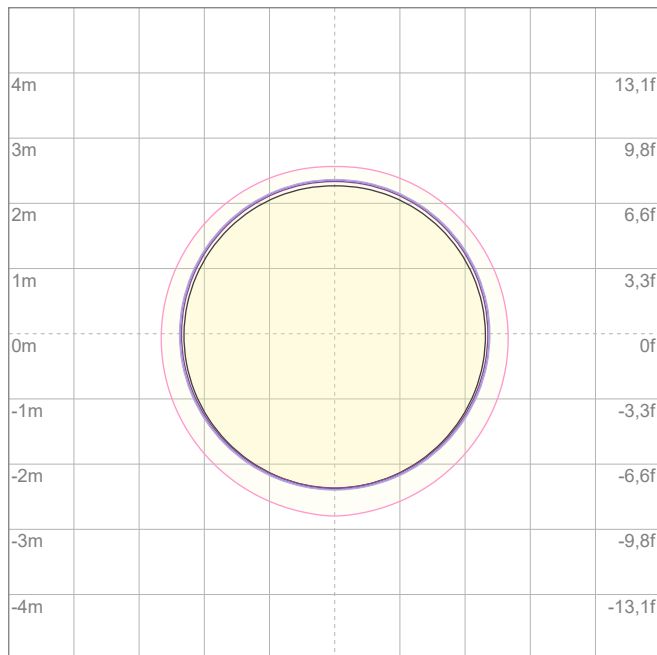


10%	1563 cd
20%	3127 cd
30%	4690 cd
40%	6253 cd
50%	7816 cd
60%	9380 cd
70%	10943 cd

Conditions:

Number of c-planes: {C_PLANES}

Candela at center: 15633 cd



ISO lux diagram

3%	4,69 lx
5%	7,82 lx
10%	15,6 lx
30%	46,9 lx
50%	78,2 lx

Conditions:

Number of c-planes: 2

Lux at center: 156 lx

Lux distribution on a surface when lamp is mounted at 10 meters from the surface.

Mounting height: 10 meters (33 feet)

CHROMATICITY REPORT



Photometric Report

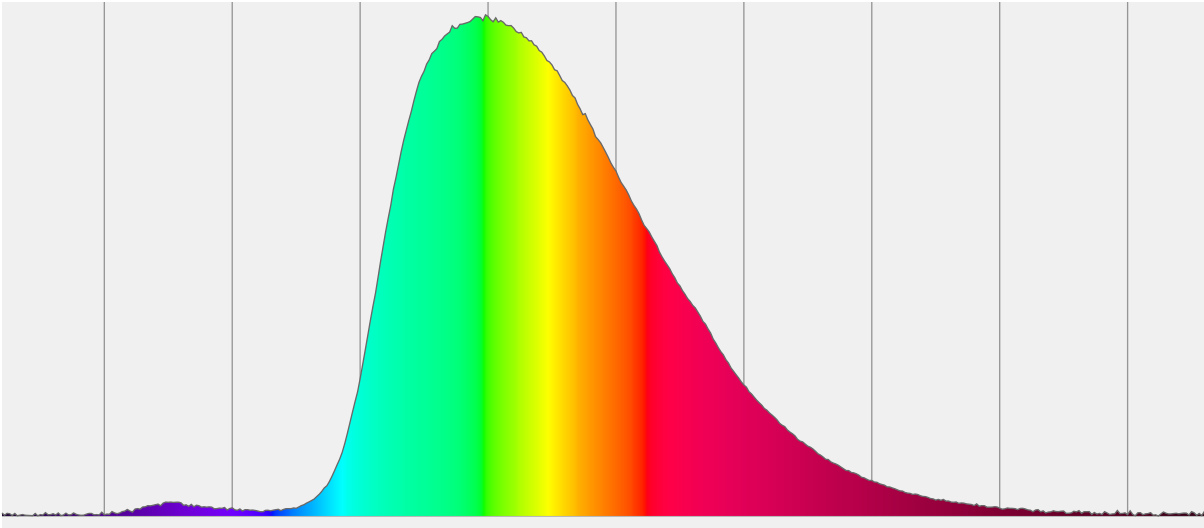
33059 - Performer Profile 150 Q6 (L), Zoom: narrow, Ordercode

Total Lumens: 1998 lm
 Peak Intensity: 15641 cd
 Fixture Efficiency: 42 Lumen/Watt



Color Temperature: 0 K
 CRI: 0,0
 CRI R9: 0,0
 CQS: 0,0
 TM-30 Rf: 0,0
 TM-30 Rg: 0,0
 Δuv : n/a
 1st Dominant Wavelength: 549 nm
 2nd Dominant Wavelength: n/a nm

Spectral Distribution



Color

0 K
 CIE 1931 Coordinates:
 X: 0,418 Y: 0,547

Color Temperature

0 K

CRI

0,0

CHROMATICITY

CIE 1931 - Detail

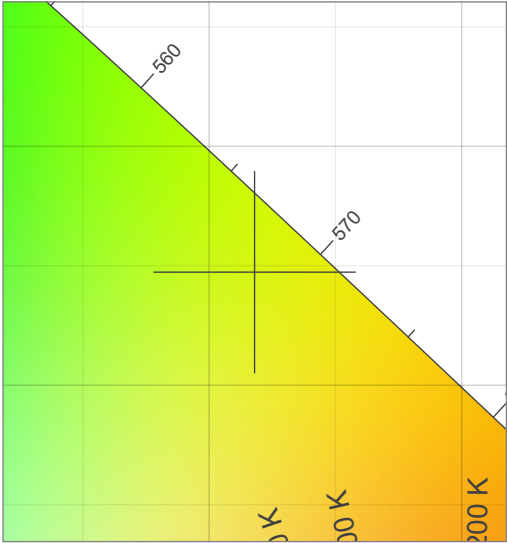
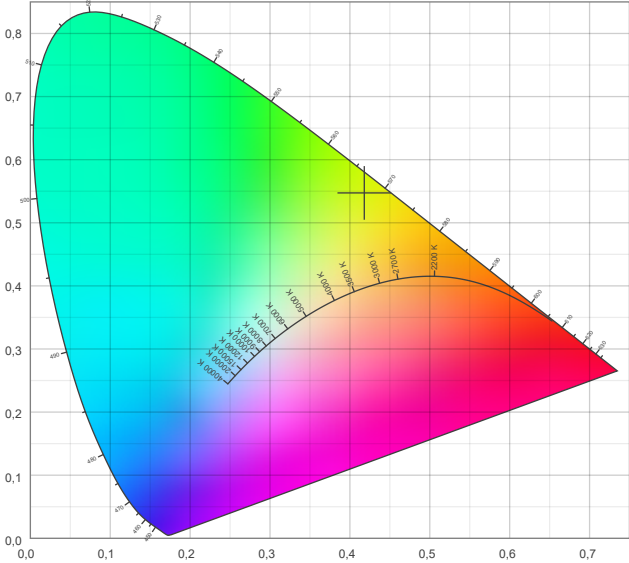
0 K

All product specifications, measurements, values and dimensions are subject to change without prior notice
X: 0,418
Y: 0,547

Photometric Report

33059 - Performer Profile 150 Q6 (L), Zoom: narrow, Ordercode

CIE 1931



CRI: 0,0 (R1-R8)

0	0	0	0	0	0	0	0	0	0	0	0	0	0	0	0
R1	R2	R3	R4	R5	R6	R7	R8	R9	R10	R11	R12	R13	R14	R15	

CQSI: 0,0

0	0	0	0	0	0	0	0	0	0	0	0	0	0	0	0
Q1	Q2	Q3	Q4	Q5	Q6	Q7	Q8	Q9	Q10	Q11	Q12	Q13	Q14	Q15	

TM-30-18 DETAILS

