

9.6 CONTROL PANEL SECTION (3/3)

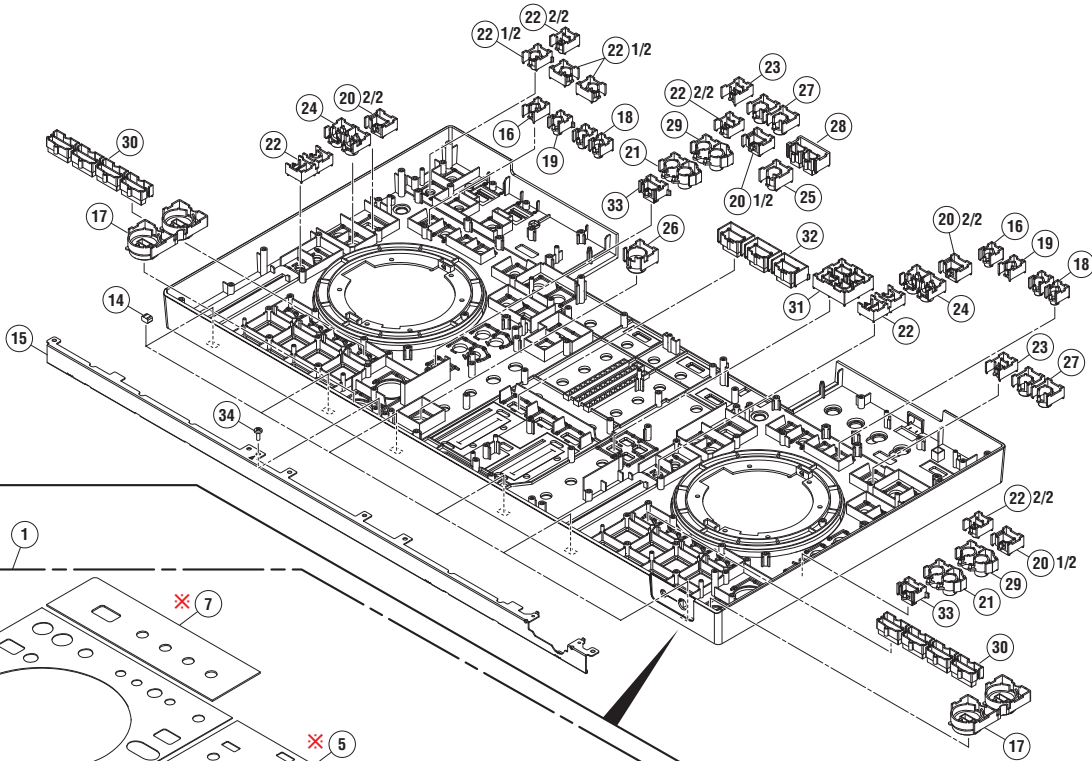
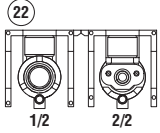
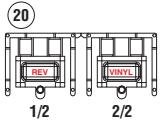
1

2

3

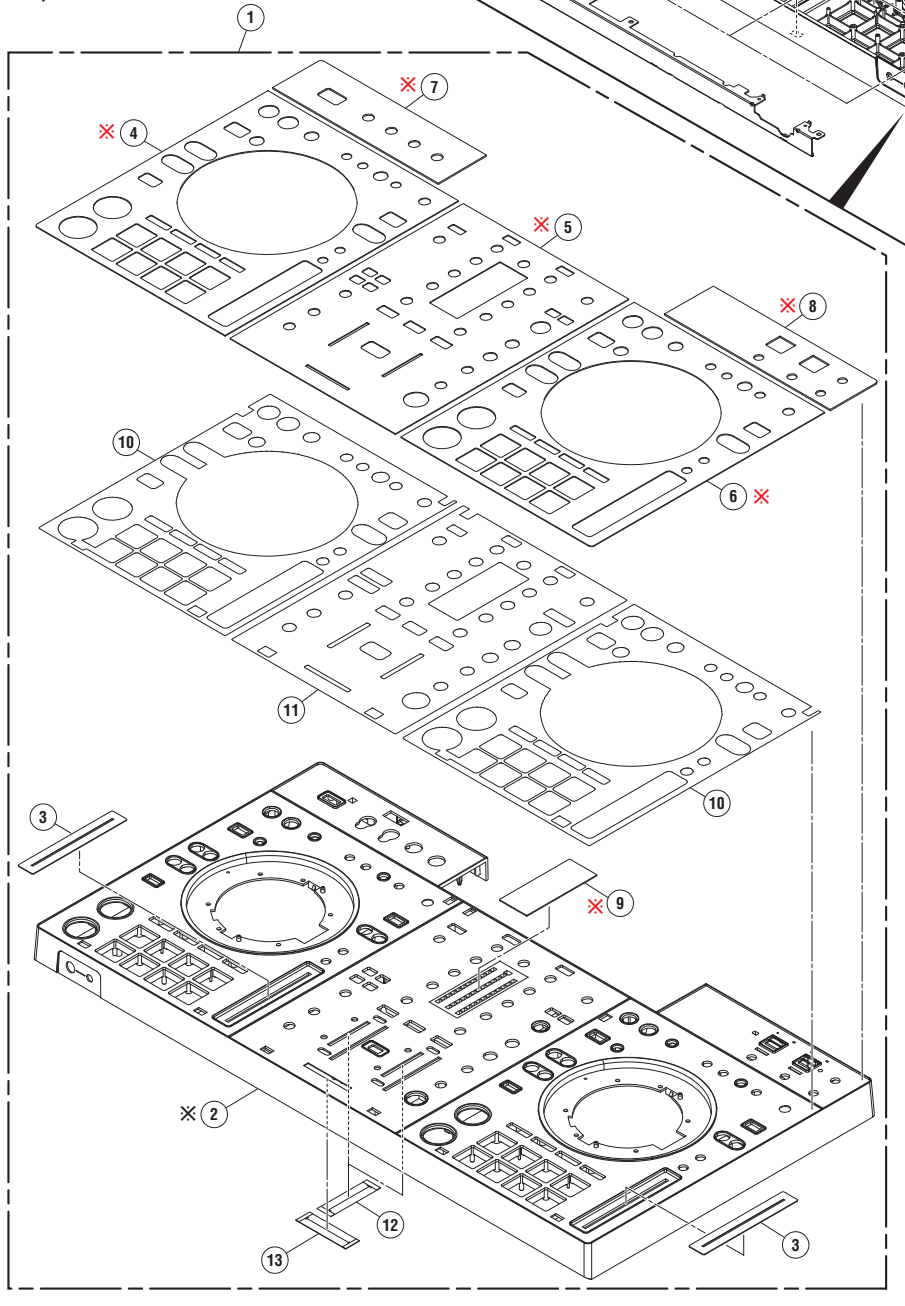
4

A • Bottom view



B

C • Top view



Note ✕:
 Plate (No.4, 5, 6, 7, 8 and 9) is bonded to the double-sided tape in the Control panel (No.2), it is difficult to replacement. Please order the following XDJ-RX2 Panel Service Assy (No.1).

D

E

F

1

2

3

4

CONTROL PANEL SECTION (3/3) SECTION PARTS LIST

<u>Mark No.</u>	<u>Description</u>	<u>Part No.</u>	
1	1..XDJ-RX2 Panel Service Assy	DEA1076	
△NSP 2	2..Control Panel	DNK6705	A
3	2..Slide Sheet 1C	DAH2404	
NSP 4	2..Plate	DAH3151	
NSP 5	2..Plate	DAH3152	
NSP 6	2..Plate	DAH3153	
NSP 7	2..Plate	DAH3154	
NSP 8	2..Plate	DAH3155	
NSP 9	2..Plate	DAH3157	
NSP 10	2..DS Tape	DEH1091	
NSP 11	2..DS Tape	DEH1093	B
12	2..Fader Packing	DEC3355	
13	2..Packing	DEC3642	
14	Gasket/JOG	DEC3562	
15	Frame	DNH3296	
16	Button/TMP	DAC2845	
17	Button/PLY	DAC3018	
18	Button/CAL	DAC3020	
19	Button/DLT	DAC3021	
20	Button/RVL	DAC3023	C
21	Button/SRC	DAC3028	
22	Button/MT	DAC3029	
23	Button/REL	DAC3030	
24	Button/SYN	DAC3032	
25	Button/TAP	DAC3038	
26	Button/EF	DAC3040	
27	Button/LOP	DAC3074	
28	Button/BEF	DAC3075	
29	Button/TSR	DAC3076	D
30	Button	DAC3285	
31	Button	DAC3286	
32	Button	DAC3287	
33	Button	DAC3288	
34	Screw	BPZ30P080FNI	