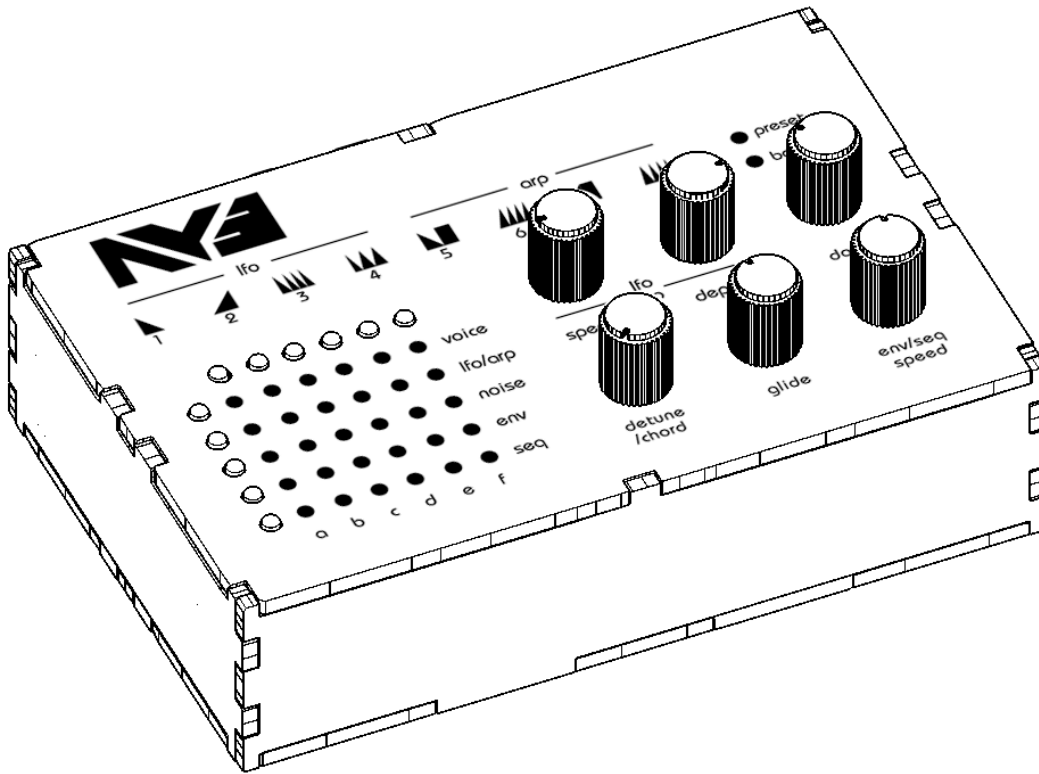


twisted electrons

NYA

user's manual





Thanks! ...Overview

Thank-you for choosing the AY3! Time to take a break from HI-FI land and enjoy some good old 8-BIT nostalgia!

The AY3 features two 8912 chips boasting 6 voice polyphony. You can apply sequences, arpeggiators, noise, envelopes and pitch modulation to each voice with a click of a button.

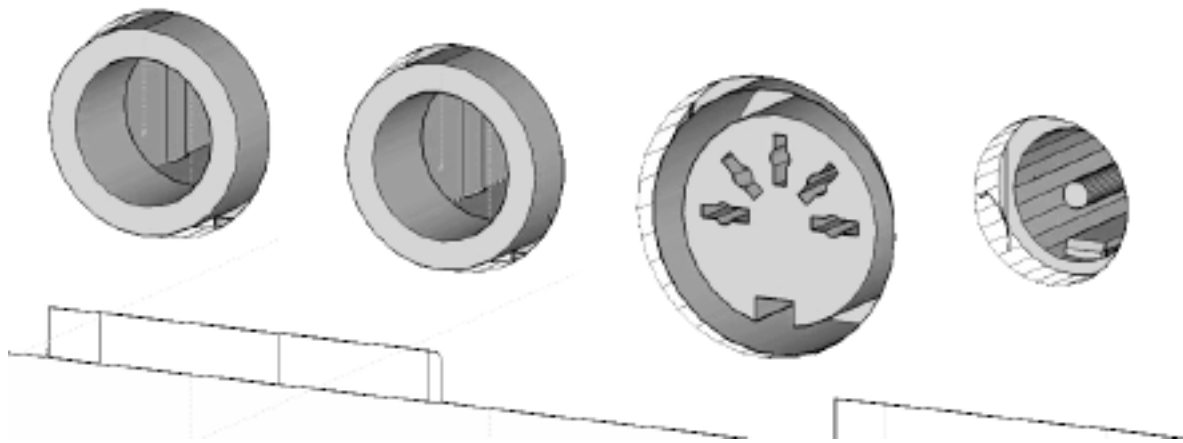
Take the video AY3 Tour!

<https://www.youtube.com/watch?v=lcXeGEhGb5I>

About the AY-8912:

The AY-3-8912 and its variants became popular chips in many [arcade games](#), and were used on, among others, the [Intellivision](#) and [Vectrex](#) video [game consoles](#) and the [MSX](#), [Amstrad CPC](#), [Oric 1](#), [Colour](#)

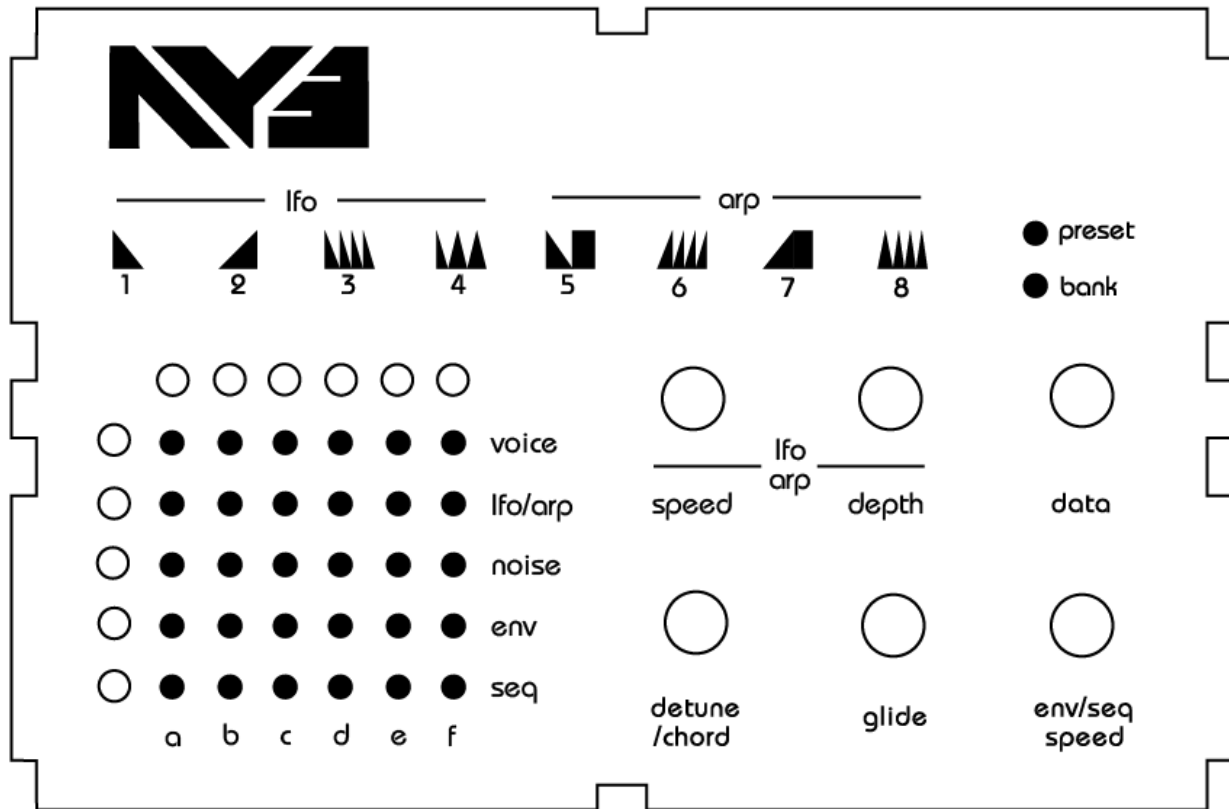
[Genie](#), [Elektor TV Games Computer](#) and Sinclair [ZX Spectrum 128/+2/+3](#) home computers as well as the [Mockingboard](#) sound card for the [Apple II family](#).



1- Connectivity & Power

The AY3 features two 1/4" audio outputs, a MIDI input and a power socket

The AY3 is equipped with a bridge rectifier so can be powered by any AC or DC voltage source between 8v and 15v, 4 between 500mA and 2000mA.

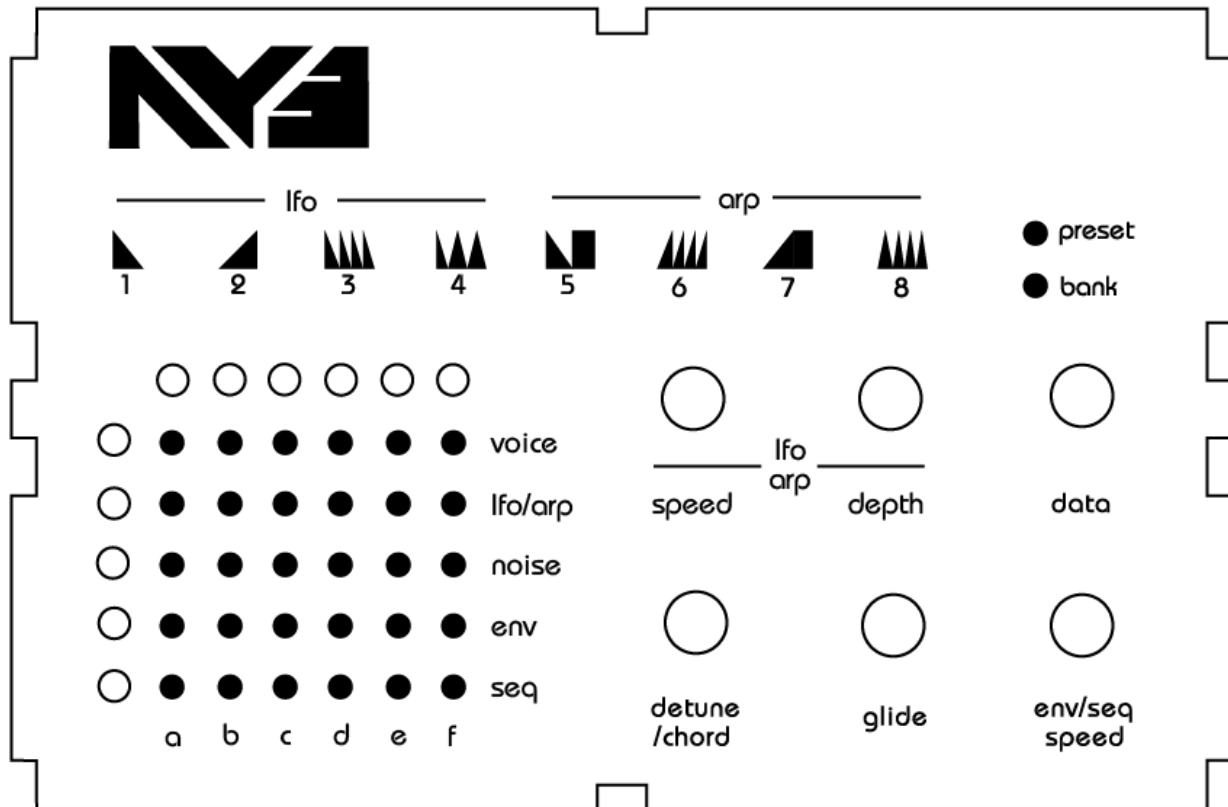


2- Preset load/save

The AY3 can hold 64 presets in 8 banks of 8 presets.

2-1 Load: Press the data wheel down to toggle between preset and bank mode (displayed above the data wheel). Roll the data wheel to load a preset.

2-2 Save: Hold the data wheel down for 3 seconds to save a preset (count-down displayed on leds **8** thru **1**).



3- Voice

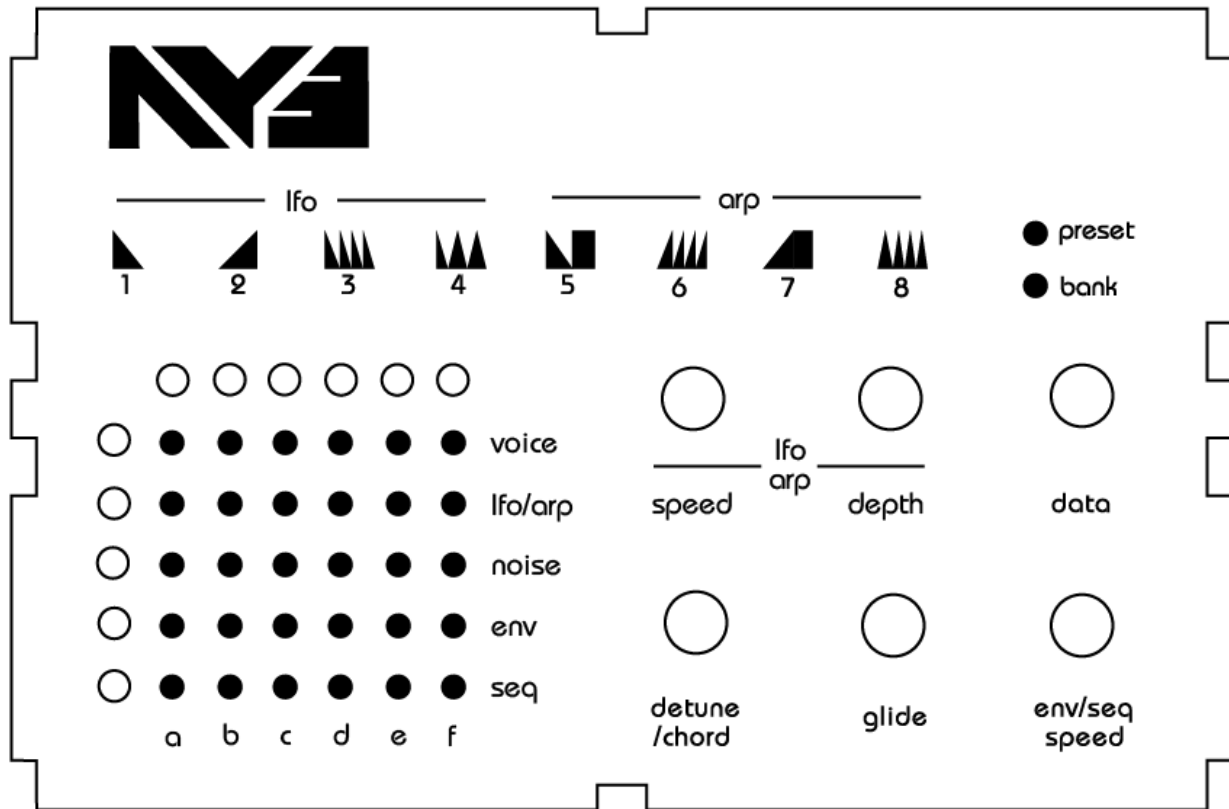
Voice edit mode has 3 sub-modes to enable/disable, adjust tuning & volume of each voice.

Cycle through these sub-modes by tapping **row button 1**. The led matrix will announce the selected sub-mode by displaying the letters **E**, **V** or **T**.

3-1 Enable: Enable/disable a voice via buttons **a** thru **f**.

3-2 Volume: Select a voice via buttons **a** thru **f**. Adjust the selected voice's volume with the data wheel. Volume is displayed on leds **1** thru **8**

3-3 Tune: Select a voice via buttons **a** thru **f**. Transpose the selected voice with the data wheel.



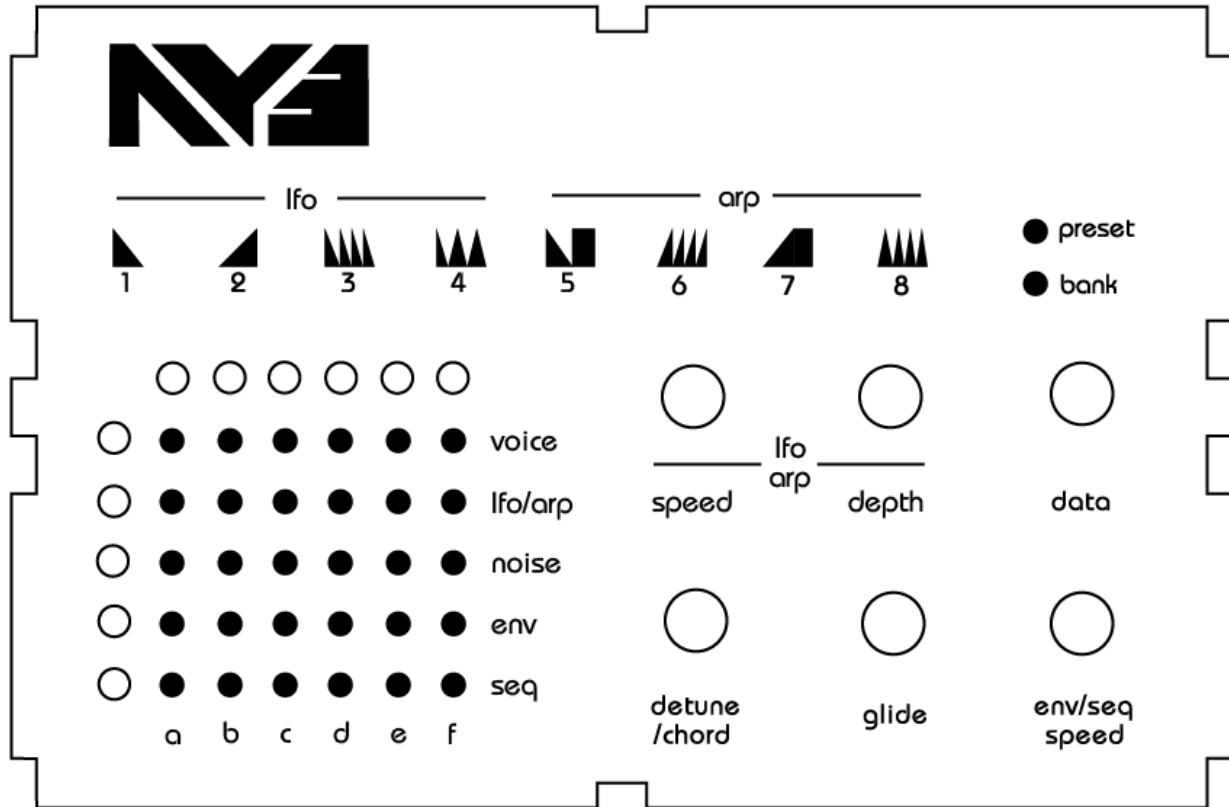
4- Lfo/arp

Lfo/arp mode offers 2 types of pitch modulation: lfo & arpeggiator. Tap **row button 2** to enter lfo/arp mode. There are 4 modes for both lfo and arp. Enable or disable the arp/lfo on each voice by clicking the buttons **a** thru **f**. Scroll through them with the data wheel.

4-1 lfo: The icons above leds **1** thru **4** indicated the selected lfo shape. Use the **speed** and **depth** knobs to adjust the lfo accordingly

4-2 arp: The 4 arp modes are up, down, up/down & random. The **speed** knob will adjust the arp's rate and the **depth** knob changes it's range in octaves

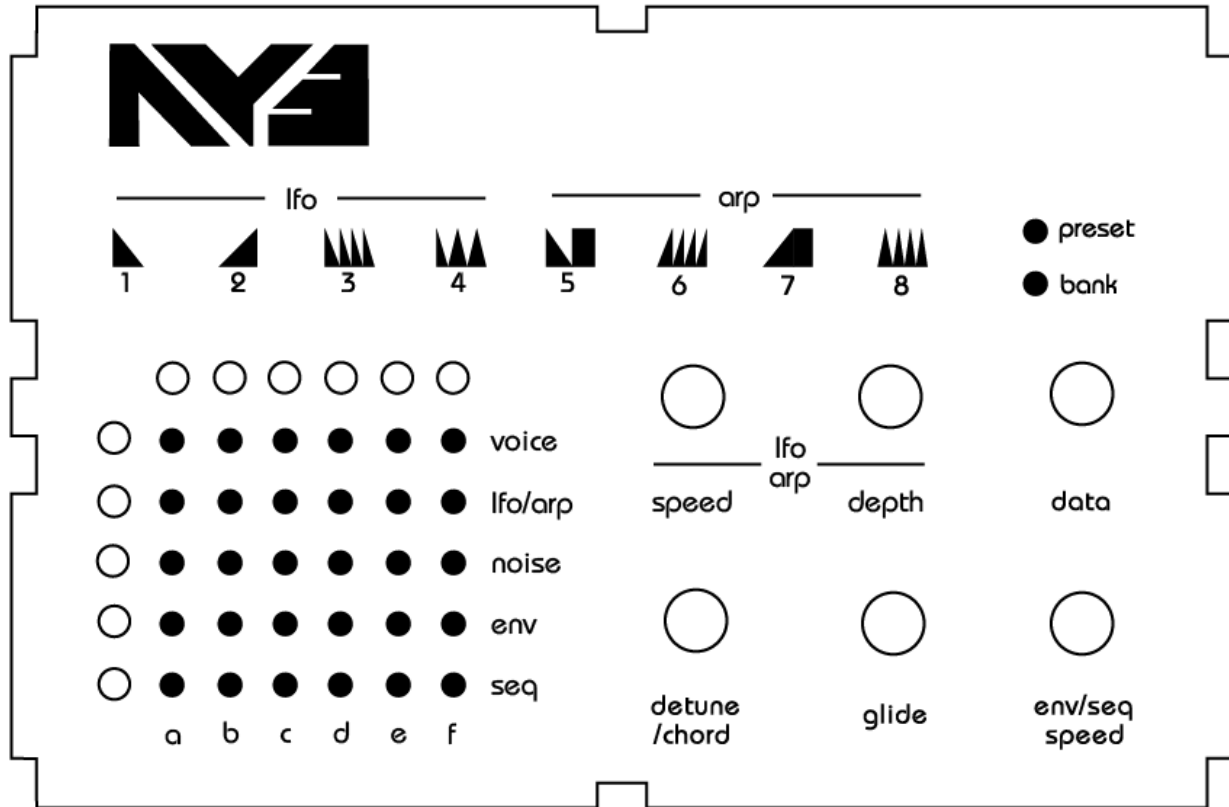
Note: The arp loves to slave itself to midi time code!



5- Noise

Noise can be applied to each voice by clicking on the buttons **a** thru **f**. Click **row button 3** to enter noise mode.

The overall noise frequency can be adjusted by rolling the data wheel. Noise frequency is represented by leds **1** thru **8**

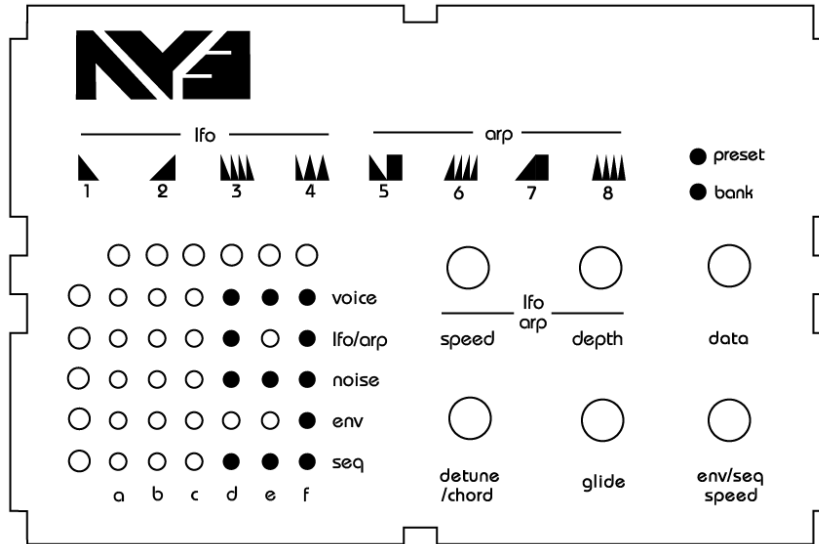


6- Env

Envelopes can be applied to control a voice's volume. Tap **row button 4** to enter env mode. There are 8 envelope shapes represented by icons above led **1** thru **8**. Scroll through them with the data wheel.

Adjust the speed of the envelopes via the **env/seq speed** knob

Note: at high speeds the envelope will self-oscillate!



7- Sequencer

Each preset can store a 16 step sequence of 3 parameters: Note, Voice on/off and noise on/off. Tap **row button 5** to enter env mode.

Apply the sequencer to a voice using buttons **a** thru **f**. Adjust the speed of the sequencer via the **env/seq speed** knob

Programming the sequencer:

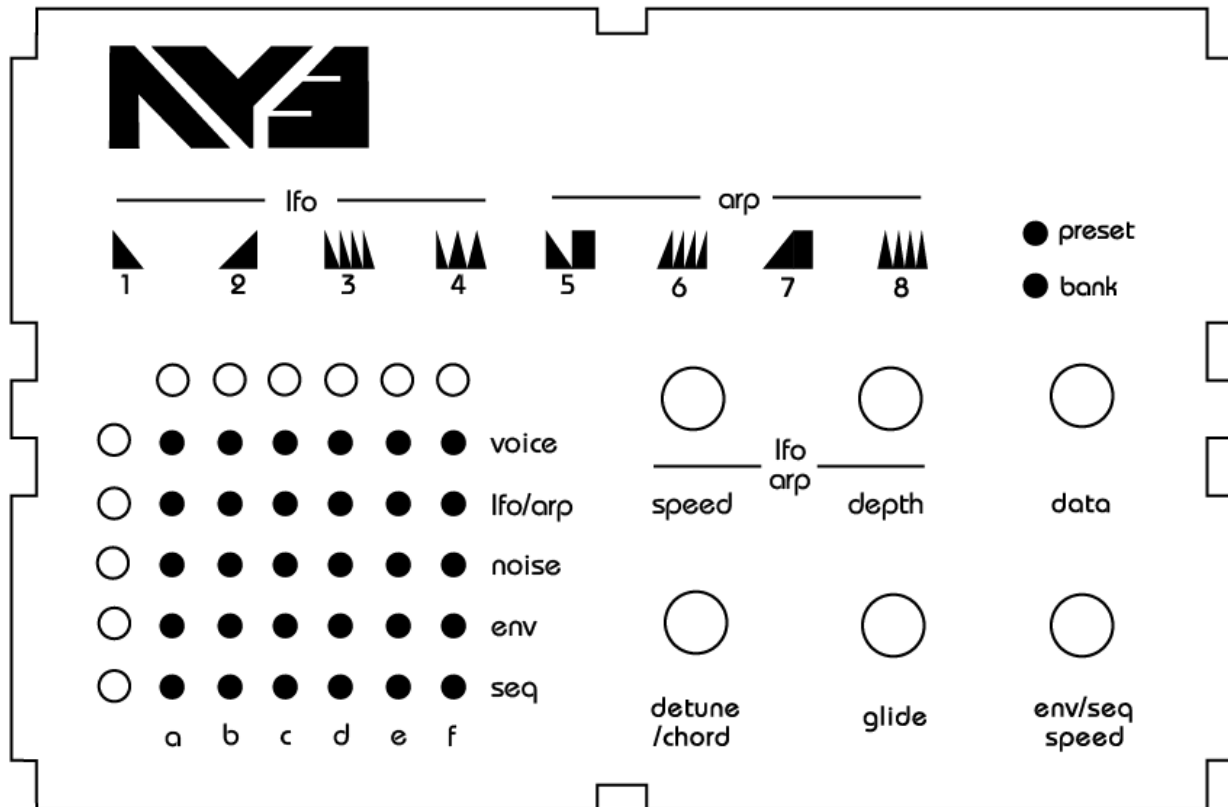
Hold **row button 5** for 3 seconds to enter sequencer program mode (count-down displayed on leds **1** thru **8**).

Now simply roll the data wheel to select a step to edit (1-16 displayed on led matrix) then play a key on your midi keyboard to input the note. Tap the row 1 button to toggle the voice on and off. Tap the row 3 button to toggle the noise on and off. The led rows 1 and 3 indicate that voice and/or noise are activated for the selected step.

Hold **row button 5** for 3 seconds to exit sequencer program mode (count-down displayed on leds **1** thru **8**).

Note: The sequencer loves to slave itself to midi time code!





8- Detune/chord & glide

8-1 Detune/chord: The **detune/chord** knob has multiple modes:

At 0%: hold all voices to perfect unison.

Between 1-50%: detune the 6 voices (Aka fatness).

51 - 99%: choose between 7 voicing chords (displayed on leds **1** thru **8**).

at 100% the AY3 becomes a polysynth. You can play up to 6 voices simultaneously on your midi keyboard.

8-2 Glide: The **glide** knob has multiple modes adds glide aka portamento to the synth's pitch. More glide=longer portamentos.

Note: try gliding between the chords!

9-1 Midi implementation

| Midi Message | Range | Result |
|------------------------|--------------|----------------------------|
| Note On/Off CH1 | 1-127 | Unison/Poly Voice |
| Note On/Off CH2 | 1-127 | AY3#1, Voice1 |
| Note On/Off CH3 | 1-127 | AY3#1, Voice2 |
| Note On/Off CH4 | 1-127 | AY3#1, Voice3 |
| Note On/Off CH5 | 1-127 | AY3#2, Voice1 |
| Note On/Off CH6 | 1-127 | AY3#2, Voice2 |
| Note On/Off CH7 | 1-127 | AY3#2, Voice3 |
| Note On/Off CH8 | 1-127 | Polyphonic mode |
| Note On/Off CH9 | 1-127 | Noise on/off AY3#1, Voice1 |
| Note On/Off CH10 | 1-127 | Noise on/off AY3#1, Voice2 |
| Note On/Off CH11 | 1-127 | Noise on/off AY3#1, Voice3 |
| Note On/Off CH12 | 1-127 | Noise on/off AY3#2, Voice1 |
| Note On/Off CH13 | 1-127 | Noise on/off AY3#2, Voice2 |
| Note On/Off CH14 | 1-127 | Noise on/off AY3#2, Voice3 |
| Control CC#2 | 0-127 | Lfo/arp speed |
| Control CC#3 | 0-127 | Lfo/arp depth |
| Control CC#6 | 0-127 | Detune amount |
| Control CC#7 | 0-127 | Glide Amount |
| Control CC#8 | 0-127 | Sequencer Speed |
| Control CC#9 | 0-127 | Noise Frequency Chips 1+2 |
| Control CC#10 | 0-127 | Noise Frequency Chip 1 |
| Control CC#11 | 0-127 | Noise Frequency Chip 2 |

continued on next page...

| Midi Message | Range | Result |
|---------------|-------|----------------|
| Control CC#12 | 0-127 | Tune, Voice1 |
| Control CC#13 | 0-127 | Tune, Voice2 |
| Control CC#14 | 0-127 | Tune, Voice3 |
| Control CC#15 | 0-127 | Tune, Voice4 |
| Control CC#16 | 0-127 | Tune, Voice5 |
| Control CC#17 | 0-127 | Tune, Voice6 |
| Control CC#18 | 0-127 | Volume, Voice1 |
| Control CC#19 | 0-127 | Volume, Voice2 |
| Control CC#20 | 0-127 | Volume, Voice3 |
| Control CC#21 | 0-127 | Volume, Voice4 |
| Control CC#22 | 0-127 | Volume, Voice5 |
| Control CC#23 | 0-127 | Volume, Voice6 |

9-2 Change Midi channel

To change the midi channel Ay3 responds to (default 1):

- Hold the bottom left button (seq) on startup
- You will see number 1 on the display, turn the encoder to set the desired channel then unplug the ay3 and reboot.

10- Firmware updating

The AY3 supports firmware updates via midi system exclusive messages (sysex).

To enter update mode aka bootloader:

- unplug the unit's power cord.
- hold the encoder button down while plugging the unit power back in.

Three bright stripes will show on the led matrix indicating that bootloader mode is active.

Now you are ready to send the sysex to the AY3 via your computer.

10-1 Pc:

For a windows pc, we recommend MIDI-OX. It is a free and very useful app!

1. Launch MIDI-OX
2. In the Sysex window, choose Command > Window > Load File and navigate the location where you stored the file.
3. Choose Command Window > Send Sysex

IMPORTANT: the buffer settings must be 2/64 byte buffers to avoid transfer corruptions, (thanks Joel for pointing this out)

10-2 Mac:

For a mac, we recommend SysEx Librarian. It is also free!

1. Launch SysEx Librarian.
2. Select your MIDI interface in the dropdown menu at the top (if it's not already selected)
3. Drag the MIDI SysEx file from the Finder into the frame of SysEx Librarian (if it's not already in there).
4. Select it with the mouse.
5. Click Play.

During upload, the led bars will flash and fill the matrix from left to right, then your AY3 will boot into the new software.



