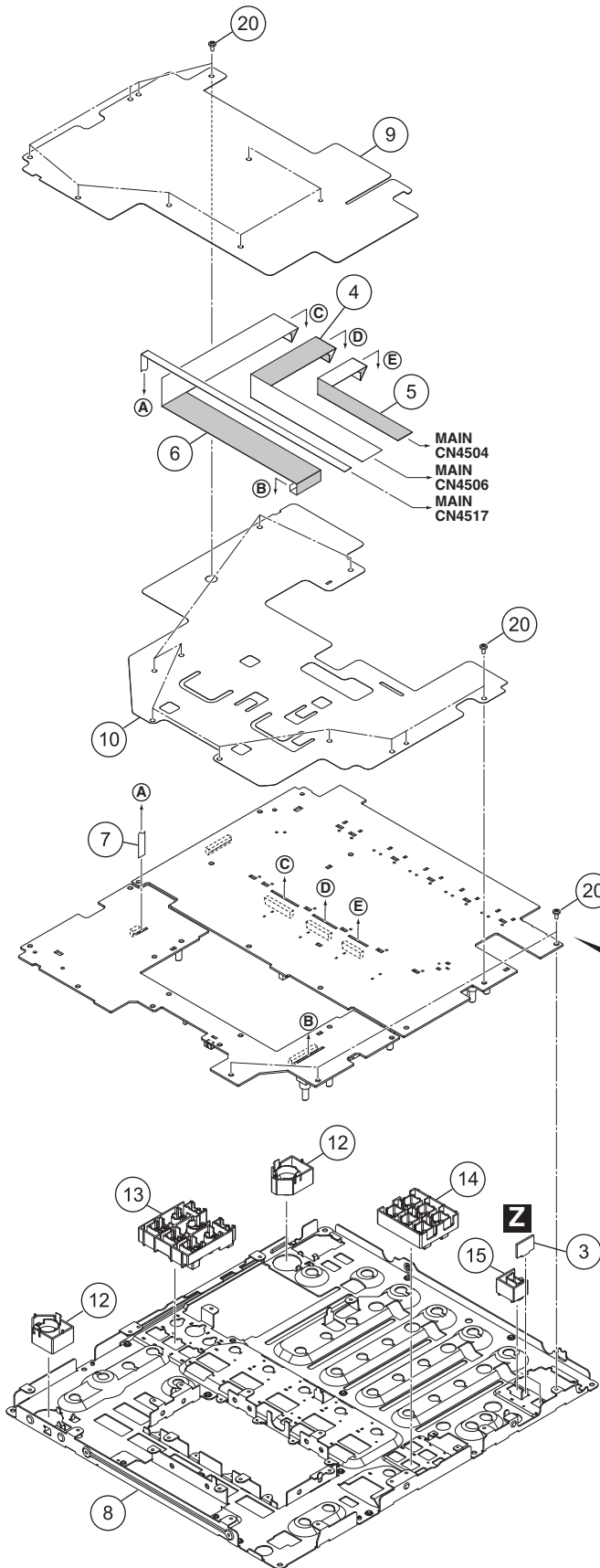


9.5 CONTROL PANEL SECTION (2/2)

A • Bottom view



Channel Fader Section

*: These parts may substitute it each other.
*: 相互で代用可能

Q * **S** * **R** * **T**

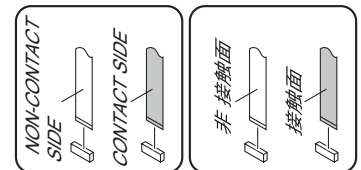
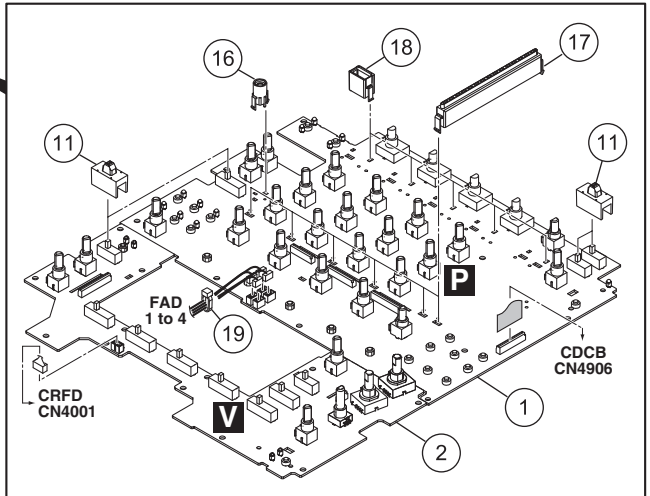
38 36 22 or 24 23 or 25 36 32
26 or 29 27 or 28 32 38
PNLA CN7006 or CN7008
PNLA CN7007 or CN7009
36 31 37 30 36 37 30 31 33 34 33 34

Lubricating oil (GYA1001)

Top & Bottom Top & Bottom
Top & Bottom Top & Bottom

Note:
Greasing must be performed at a total of 8 points, 2 points each for the upper and bottom places of each shaft. (0.4 to 1 mg per point × 8 points)
After applying grease, move the slider base back and forth from one end to the other for approximately 10 to 20 strokes, in order to fully spread the grease.

注意:
グリス塗布位置は各シャフト上下2箇所ずつ計8箇所です。
(1ポイント当たり 0.4~1 mg × 8ポイント)
グリス塗布後はスライダーベースを動かして(フルストローク)
摺動部にグリスを十分にまぜてください。
(動かす回数目安は10~20往復)



CONTROL PANEL SECTION (2/2) PARTS LIST

<u>Mark No.</u>	<u>Description</u>	<u>Part No.</u>	
1	PNLA Assy	DWX3719	
2	PNLB Assy	DWX3720	A
3	GRDM Assy	DWX3862	
4	FFC	DDD1717	
5	FFC	DDD1718	
6	FFC	DDD1720	
7	FFC	DDD1738	
8	Stay	DND1308	
9	Sheet	DEC3616	
10	Sheet	DEC3620	
11	Cap	DAC3136	B
12	Button	DAC3141	
13	Button	DAC3142	
14	Button	DAC3143	
15	Button	DAC3144	
16	Lens Holder	DNK4533	
17	Level Meter Assy	DXB1882	
18	Holder	DNK6511	
19	Cable Tie	ZCA-SKB90BK	
20	Screw	BBZ30P060FTC	C
21	•••••		
22	FAD1 Assy	DWX3723	
23	FAD2 Assy	DWX3724	
24	FAD3 Assy	DWX3725	
25	FAD4 Assy	DWX3726	
26	Connector Assy	PF03PP-B10	
27	Crimp Connector	PF03PP6B10	
28	Connector Assy	PF03PP4B12	
29	Connector Assy	PF03PP2B12	D
NSP 30	Guide Shaft VK1	DLA1978	
31	Lever Plate	DNH2954	
32	VR Stay	DNH2955	
33	Slider Base	DNK5851	
34	Shaft Holder	DNK5852	
35	•••••		
36	Screw	BPZ20P060FTC	
37	Screw	CPZ26P080FTC	E
38	Screw	PMH20P040FTC	