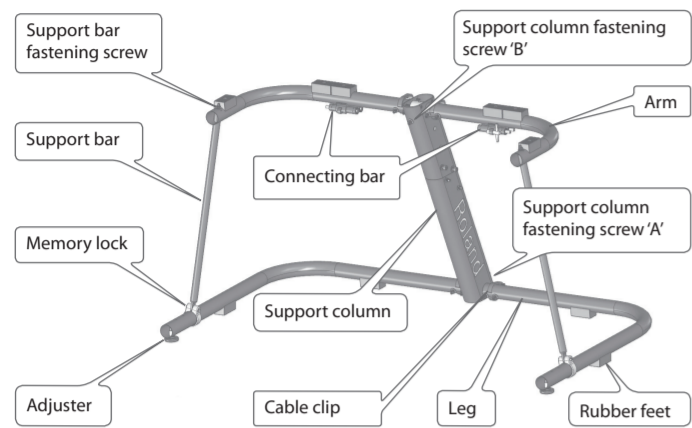


Checking the Included Items

The following items are packed with the KS-G8B. As soon as you open the package, check to make sure that all of these included items are present. If anything is missing, contact your dealer.

- KS-G8B (Stand body)
- Owner's manual (This leaflet)
- Drum key
- Cable clip x 4
- Connecting bar x 4

Parts Descriptions



Before Assembling

- Be careful not to pinch your fingers when setting up the stand.
- Do not adjust the height of the stand while the keyboard is resting on it.
- Do not put your fingers into the pipes of the stand. Doing so may cause injury.
- Firmly tighten screws before using the stand. In particular, check that everything is secure before a performance. If any parts are loose, your keyboard may fall down, causing injury.
- Place your keyboard so that it is centered on the middle of the stand.
- Use the included cable clip to secure any cables connected to your keyboard.
- Do not move the stand with the keyboard resting on it. Doing so may cause the keyboard to overturn or fall.

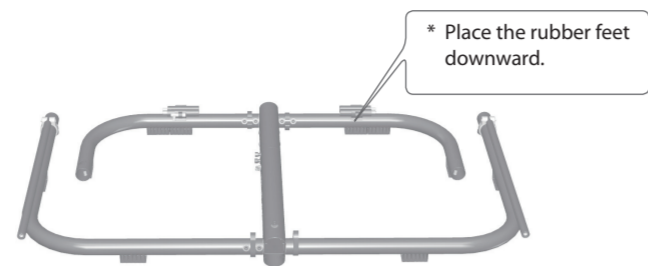
Main Specifications

Weight Capacity	Maximum 70 kg, 154 lbs 6 oz
Dimensions	Unfolded 1,210 (W) x 710 (D) x 645-815 (H) mm 47-11/16 (W) x 28 (D) x 25-7/16-32-1/8 (H) inches
	Folded 1,210 (W) x 730-920 (D) x 125 (H) mm 47-11/16 (W) x 28-3/4-36-1/4 (D) x 4-15/16 (H) inches
Weight	9.7 kg 21 lbs 7 oz
Minimum Keyboard Size for Installation	975 (W) x 265 (D) mm 38-7/16 (W) x 10-7/16 (D) inches

* In the interest of product improvement, the specifications and/or appearance of this unit are subject to change without prior notice.

Assembly Procedure

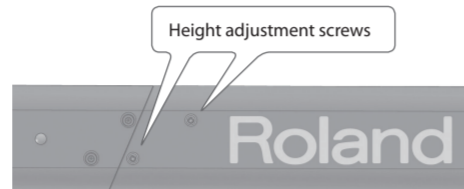
First, lay the packing material on the floor and place the stand on it as shown in the following illustration.



Adjusting the Height

You can adjust the height of the KS-G8B in three levels: height 1 (645 mm), height 2 (730 mm), and height 3 (815 mm).
* When the stand is shipped, it is adjusted to height 1 (645 mm). If you don't need to change the height, proceed to "Provisionally Assembling the Leg and Arm".

1. Use the drum key to remove the two height adjustment screws.



2. Adjust the support column by sliding it to the desired height.

Setting	Height	Remarks
Height 2	730 mm	Position where two holes are visible. Align the holes accurately.
		Position where four holes are visible. Align the holes accurately.
Height 3	815 mm	Position where four holes are visible. Align the holes accurately.

3. Verify that the holes are aligned, and then use the drum key to securely fasten the two height adjustment screws that you removed.

HINT
While fastening the height adjustment screws, gently lift up the support column that you slid; this will let you tighten the screws smoothly.

Before using this stand, carefully read the sections entitled "USING THE UNIT SAFELY" and "IMPORTANT NOTES." These sections provide important information concerning the proper operation of the stand. This owner's manual should be saved and kept on hand as a convenient reference.

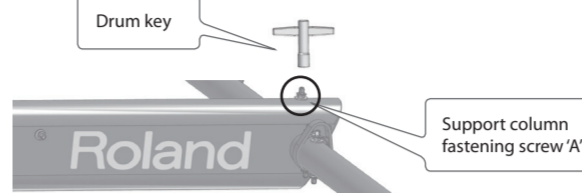
Copyright © 2013 ROLAND CORPORATION

All rights reserved. No part of this publication may be reproduced in any form without the written permission of ROLAND CORPORATION.

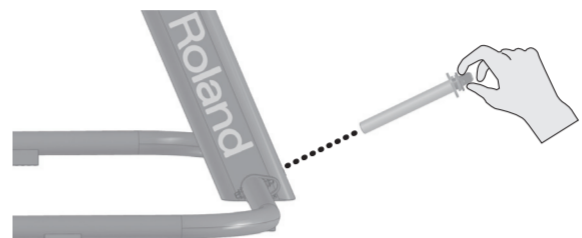
Provisionally Assembling the Leg and Arm

To prevent the screw holes from becoming misaligned, only tighten the screws finger-tight; don't tighten them completely.

1. Use the drum key to remove the support column fastening screw 'A'.

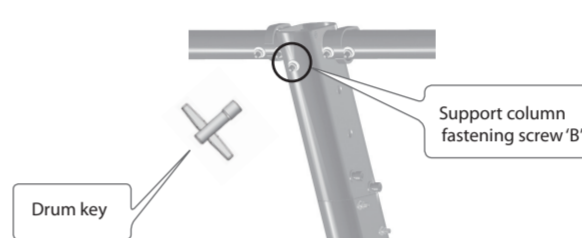


2. Raise the support column, and hold it in place with your hand.
3. Insert the previously-removed column fastening screws 'A' into their original location, and finger-tighten the screws to provisionally fasten the support column.

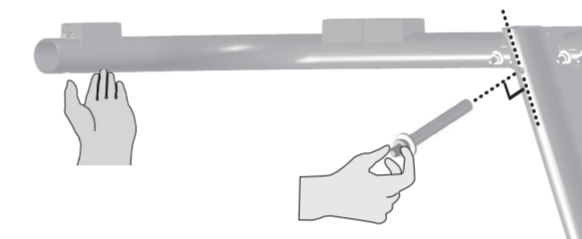


MEMO
If the support column is raised insufficiently or too high, you won't be able to tighten the screws smoothly. Make fine adjustments to the angle of the support column to find the point at which the screws can be tightened smoothly.

4. Use the drum key to remove the support column fastening screw 'B'.



5. Use one hand to hold the tip of the arm, and rotate it so that the arm is horizontal.
6. Use the other hand to hold support column screw 'B', and insert it at a right angle to the support column. Finger-tighten the screw to provisionally fasten the arm.



MEMO
If you are unable to smoothly tighten the screw, make fine adjustments to the angle of the arm to find the point at which you can tighten the screw smoothly.

Adjusting the Support Bars

1. Use the drum key to remove the support bar fastening screws located at the end of the left and right support bars.

NOTE

The support bar fastening screws will be used when assembling the support bars. Take care not to lose them.



2. If you will be using the stand at height 2 (730 mm), attach one Connecting bar to each side, left and right. If you will be using the stand at height 3 (815 mm), attach two Connecting bars to each side, left and right.

* If you have not adjusted the height in "Adjusting the Height," proceed to "Provisionally Assembling the Support Bars and Memory Locks".

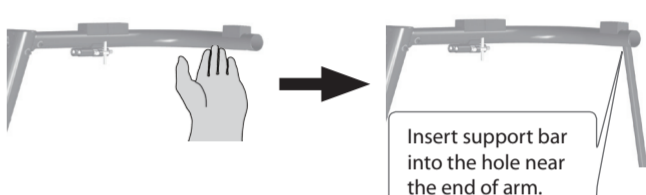


Provisionally Assembling the Support Bars and Memory Locks

1. Use the drum key to loosen the memory locks.



2. Raise each support bar.
3. While lightly pressing the arm upward, insert the support bar into the hole located at the end of the arm.



4. Finger-tighten the support bar fastening screw to provisionally fasten the support bar.

MEMO

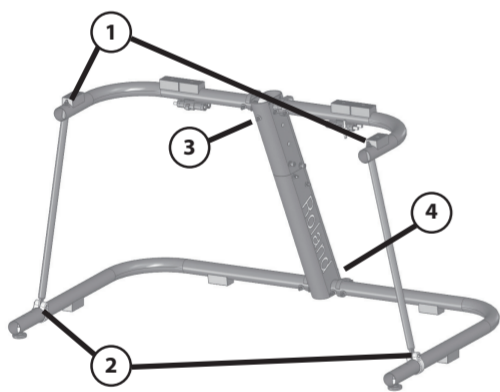
If you are unable to smoothly tighten the screw, move the support column slightly forward or backward to find the point at which the screw can be tightened smoothly.

5. Change the position of the memory lock as appropriate for the height of the support column.

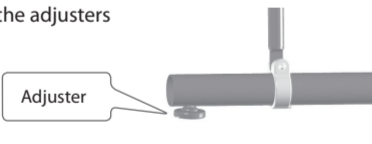


Securely Tightening the Screws

1. Use the drum key to securely tighten the screws in the order shown in the illustration below.



2. Gently rock the KS-G8B to see whether there is any instability. If there is any instability, turn the adjusters to stabilize the stand.



This completes assembly of the KS-G8B.

If you want to change the height of the stand

1. Loosen support column fastening screw 'A', support column fastening screw 'B', and the memory locks.
2. Remove the left and right support bar fastening screws.
3. While grasping the support bar, detach the support bars from the arm and fold them down as shown in the illustration below.
4. In order to change the height safely, lay down the stand as shown in the illustration.
5. Adjust the height of the support column as described in "Adjusting the Height".
6. Using both hands to hold the support column, slowly raise the stand upright.
7. Adjust the length of the support bars as described in "Adjusting the Support Bars".
8. Provisionally fasten the support bars and the memory locks as described in "Provisionally Assembling the Support Bars and Memory Locks".
9. Firmly tighten the screws as described in "Securely Tightening the Screws".
10. Gently rock the KS-G8B to see whether there is any instability.

USING THE UNIT SAFELY

INSTRUCTIONS FOR THE PREVENTION OF FIRE, ELECTRIC SHOCK, OR INJURY TO PERSONS

About **WARNING** and **CAUTION** Notices

WARNING	Used for instructions intended to alert the user to the risk of death or severe injury should the unit be used improperly.
CAUTION	Used for instructions intended to alert the user to the risk of injury or material damage should the unit be used improperly. * Material damage refers to damage or other adverse effects caused with respect to the home and all its furnishings, as well to domestic animals or pets.

About the Symbols

⚠	The ⚠ symbol alerts the user to important instructions or warnings. The specific meaning of the symbol is determined by the design contained within the triangle. In the case of the symbol at left, it is used for general cautions, warnings, or alerts to danger.
⚠	The ⚠ symbol alerts the user to items that must never be carried out (are forbidden). The specific thing that must not be done is indicated by the design contained within the circle. In the case of the symbol at left, it means that the unit must never be disassembled.
⚠	The ⚠ symbol alerts the user to things that must be carried out. The specific thing that must be done is indicated by the design contained within the circle. In the case of the symbol at left, it means that the power-cord plug must be unplugged from the outlet.

ALWAYS OBSERVE THE FOLLOWING

- WARNING**
Do not disassemble or modify by yourself
Do not carry out anything unless you are instructed to do so in the owner's manual. Otherwise, you risk causing malfunction.
- CAUTION**
Use only stand manufactured by Roland
This stand for use only with specific Roland musical instruments. Use other models is capable of resulting in instability causing possible injury.
- CAUTION**
Evaluate safety issues before using stands
Even if you observe the cautions given in the owner's manual, certain types of handling may allow keyboard to fall from the stand, or cause the stand to overturn. Please be mindful of any safety issues before using this product.
- CAUTION**
Avoid climbing on top of the unit, or placing heavy objects on it
Otherwise, you risk injury as the result of the unit toppling over or dropping down.
- CAUTION**
Keep small items out of the reach of children
To prevent accidental ingestion of the parts listed below, always keep them out of the reach of small children.
- CAUTION**
Removable Parts
Screws

IMPORTANT NOTES

- Placement**
• Depending on the material and temperature of the surface on which you place the stand, its rubber feet may discolor or mar the surface.
- Maintenance**
• For everyday cleaning wipe the stand with a soft, dry cloth or one that has been slightly dampened with water. To remove stubborn dirt, use a cloth impregnated with a mild, non-abrasive detergent. Afterwards, be sure to wipe the stand thoroughly with a soft, dry cloth.
- Never use benzene, thinners, alcohol or solvents of any kind, to avoid the possibility of discoloration and/or deformation.**
- Trademarks**
• Roland is a registered trademark of Roland Corporation in the United States and/or other countries.

Information

When you need repair service, call your nearest Roland Service Center or authorized Roland distributor in your country as shown below.

AFRICA REUNION MARCEL FO-YAM Sarl 25 Rue Jules Hermann, Chaudron - BP79 971 091 Site Clotilde Cedex, REUNION ISLAND TEL: (02) 92 218 429 SOUTH AFRICA Paul Bothner/PTV Ltd. Royal Cape Park, Unit 24 Londonderry Road, Ottery 7800 Cape Town, SOUTH AFRICA TEL: (021) 799 4900 ASIA CHINA Roland Shanghai Electronics Co., Ltd. SF, No. 1500 Pingliang Road, Yangpu Shanghai 200090, CHINA TEL: (021) 5580-0800 HONG KONG Roland Shanghai Electronics Co., Ltd. (BEIJING OFFICE) 3F, Soukai Fortune Building 63 West Dawang Road, Chaoyang Beijing, CHINA TEL: (010) 990-2565/0777 INDIA Tom Lee Music 11/F Silverstone Tower 1 30 Canton Rd Tsimshatsui, Kowloon, HONG KONG TEL: (852) 2737-7688 PARSONS MUSIC LTD. 8th Floor, Railway Plaza, 39 Chatham Road South, T.S.T., Kowloon, HONG KONG TEL: (852) 2333-1863 INDONESIA Riva Digital (India) Pvt. Ltd. 411, Nirmal Kendra Mahalaxmi Flats Compound Off. Dr. Edwin Mossa Road, Mumbai-400011, INDIA TEL: (022) 2493 9051 INDONESIA PT. Citra Intrama Ruko Garden Shopping Arcade Unit C-8, Podomoreja City J.Letjend. S.Parmar Kav.28 Jakarta Barat 11470, INDONESIA TEL: (021) 5698-9219/520 KAZAKHSTAN Altair Dystary 141 Abilay-Khan ave, 1st floor, 050000 Almaty, KAZAKHSTAN TEL: (727) 2725477 FAX: (727) 2720730 KOREA Cosmos Corporation 1461-9, Seocho-Dong Seocho-Gu, Seoul, KOREA TEL: (02) 3486-8855 MALAYSIA/SINGAPORE Roland Asia Pacific Sdn. Bhd. 45-1, Block C2, Jalan PJU 1/39, Dataran Prima, 47301 Petaling Jaya, Selangor, MALAYSIA TEL: (03) 7805-3263 PHILIPPINES G.A. Yungco & Co. Inc. 339 G.I. Puyat Avenue Makati, Metro Manila 1200, PHILIPPINES TEL: (02) 899 9801 TAIWAN ROLAND TAIWAN ENTERPRISE CO., LTD. 9F-5, No. 112 Chung Shan North Road Sec. 2 Taipei 104, TAIWAN, R.O.C. TEL: (02) 2561 3339	THAILAND Theera Music Co., Ltd. 100-108 Soi Weng Nimitkarnam, New Road, Sumpantawong, Bangkok 10100, THAILAND TEL: (02) 224-8821 Viet Nam VIET THONG CORPORATION 38/ CACH MANG THANG TAM ST. DIST.3, HO CHI MINH CITY, VIET NAM TEL: (08) 9316540 OCEANIA AUSTRALIA/ NEW ZEALAND Roland Corporation Australia Pty. Ltd., 35 Campbell Avenue, Dee Why West NSW 2099, AUSTRALIA For Australia TEL: (02) 9982 8266 For New Zealand TEL: (09) 3098 715 ARGENTINA Instrumentos Musicales S.A. Av.Santa Fe 2055 (1123 Buenos Aires, ARGENTINA TEL: (011) 4616-2700 BARBADOS A&B Music Supplies LTD 12 Webster Industrial Park P.O. Box 100, BARBADOS TEL: (246) 430-1100 BRAZIL Roland Brasil Ltda. Rua San Jose, 211 Parque Industrial San Jose Coria - Sao Paulo - SP, BRAZIL TEL: (011) 4615 5666 CHILE Comercial Fancyl S.A. Rut: 96.919.420-1 Natalier Cox #739, 4th Floor Santiago - Centro, CHILE TEL: (02) 384-2180 COLOMBIA CENTRO MUSICAL S.A.S. Parque Industrial del Norte Bodega 130 GIRARDOTA - ANTIQUIA, COLOMBIA TEL: (454) 57 77 EXT 115 COSTA RICA JUAN Bansbach Instrumentos Musicales Ave.1, Calle 11, Apartado 10237, San Jose, COSTA RICA TEL: 258-0211 CURACAO Zeelandia Music Center Inc. Orionweg 30 Curacao, NETHERLAND ANTILLES TEL: (305) 5926866 DOMINICAN REPUBLIC Instrumentos Fernando Giraldez Calle Roberto Pastoriza #325 Sanchez Nieto Santo Domingo, DOMINICAN REPUBLIC TEL: (809) 683 0305 ECUADOR Mas Musika Rumichachi 22 y Zaruma Guayaquil - ECUADOR TEL: (593-4) 2302364 EL SALVADOR OMNI MUSIC 75 Avenida Norte y Final Alameda Juan Pablo II, Edificio No.4010 San Salvador, EL SALVADOR TEL: 262-0788	GUATEMALA Casa Instrumental Callezada Roosevelt 34-01, zona 11 Ciudad de Guatemala, GUATEMALA TEL: (502) 599-2888 HONDURAS Almazen Pajaro Azul S.A. de C.V. B.D.Paz Barahona 3 Ave. 11 Calle S/O San Pedro Sula, HONDURAS TEL: (504) 553-2029 TEL: (088) 9316540 MARTINIQUE Musique & Son Z'Les Mangie 97232 Le Lamentin, MARTINIQUE F.W.I. TEL: 596 596 4268/60 MEXICO Casa Veenkamp, s.a. de c.v. Av. Toluca No. 323, Col. Olivar de los Padres 01780 Mexico D.F., MEXICO TEL: (55) 5668-6699 Faly Music Sucursal Capu Blvd. Norte N.3213 Col. Nueva Aurora Cp.72070 Puebla, Puebla, MEXICO TEL: (01) (222) 231567 0 97 FAX: 01 (222) 2266241 Gama Music S.A. de C.V. Madero Pte. 810 Colonia Centro CP.64000 Monterrey, Mexico TEL: (01) (81) 8374-1640 / 8372-4097 www.gamamusic.com Proscenia Morelos No. 2273 Col. Arcos Sur CP.4120 Guadalupe, Jalisco, MEXICO TEL: (01) (33) 3630-0015 NICARAGUA Bansbach Instrumentos Musicales Nicaragua Alameda "E" de la Calle Principal de la Farmacia Sta.Avenida 1 Cuadra al Lago #503 Managua, NICARAGUA TEL: (505) 277-2557 PANAMA SUPRO MUNDIAL S.A. Boulevard Andrews, Albrook, Panama City, REP. DE PANAMA TEL: 315-0101 PARAGUAY WORLD MUSIC Jebel Centro 2018, Centro CIUDAD DE ESTE, PARAGUAY TEL: (595) 615 059 PERU AUDIONET DISTRIBUCIONES MUSICALES SAC Jr. Ramon Dagnino N°201 - Jesus Maria DISTRITO DE JESUS MARIA LIMA, PERU TEL: 9983 47 301 - 51 433 80 83 TRINIDAD AMR Ltd Ground Floor Maritime Plaza Barataria TRINIDAD W.I. TEL: (868) 638 6385 URUGUAY Todo Musica S.A. Francisco Acuna de Figueroa 1711 CP: 11.800 Montevideo, URUGUAY TEL: (02) 924-2335 VENEZUELA Instrumentos Musicales Allegro C.A. Av. las Industrias edf.Guitar import #7 zona Industrial de Turumo-Caracas, VENEZUELA TEL: (212) 244-1122	EUROPE BELGIUM/FRANCE/ HOLLAND/ LUXEMBOURG Roland Central Europe N.V. Houtstraat 3, B-2260, Dessel (Westerlo) BELGIUM TEL: (014) 575811 BOSNIA AND HERZEGOVINA Mix-AP Music 78000 Banja Luka, Veszina Maslese 3, BOSNIA AND HERZEGOVINA TEL: 65 403 1168 CROATIA ART-CENTAR Degenova 3, HR - 10000 Zagreb, CROATIA TEL: (1) 466 8493 CZECH REP. CZECH REPUBLIC DISTRIBUTOR s.r.o. Pod Bani 180 00 Praha 8, CZECH REP. TEL: 266 312 557 DENMARK/ESTONIA/ LATVIA/LITHUANIA/ Roland Scandinavia A/S Skagerakvej 7 Postboks 880 DK-2100 Copenhagen, DENMARK TEL: 39166222 FINLAND Roland Scandinavia AS, Fialla Finland Vanha Nummijarvenie 62 01670 Vantaa, FINLAND TEL: (0) 9 68 24 020 GERMANY/AUSTRIA ROLAND Germany GmbH, Adam-Opfermann-Strasse 4, 64509 Naunheim, GERMANY TEL: 6152 95546-00 GREECE/CYPRUS STOLLAS S.A. Music Sound Light 155, New National Road Patis 26442, GREECE TEL: 210-51455400 HUNGARY Roland East Europe Ltd. 2045, Törökbalint, FSD Park 3., 6p., Budapest, HUNGARY TEL: (23) 511 011 IRELAND Roland Ireland E2 Calmout Park, Calmout Avenue, Dublin 12, Republic of IRELAND TEL: (01) 4204444 ITALY Roland Italy S. p. a. Viale delle Industrie 8, 20020 Aese, Milano, ITALY TEL: (02) 937 78300 Macedonia MK MUZIK Aleksio Derminevski-Bauman 9-3, 1400 Vile, MACEDONIA TEL: (02) 575 1122 MONTENEGRO MAK-AP Przno, Kamenovo bb., 86000 Budva, MONTENEGRO TEL: 68 050 112 NORWAY Roland Scandinavia Avd. Kontor Norge Lilleakerveien 2 Postboks 95 Lilleaker N-0216 Oslo, NORWAY TEL: 2273 0074 POLAND ROLAND POLSKA SP. Z O.O. ul. Kty Grodziskie 16B 03-209 Warszawa, POLAND TEL: (022) 678 9512 PORTUGAL Roland Systems Group EMEA, S.L. Branch Office Porto Edificio Tower Plaza Rotunda Eng. Edgar Cardoso 23, 4-8 4400-676 Vila Nova de Gaia, PORTUGAL TEL: (+351) 22 608 00 60 ROMANIA Pro Music Concept SRL 440221 Satu Mare B-dul Independentei nr. 14/a, ROMANIA TEL: (0361) 807-333 RUSSIA Roland Music LLC Donohtovaya ul.30a/p.5 117 545 Moscow, RUSSIA TEL: (495) 981-4967 SERBIA Music AP Surjaska br. 5 X5 - 24413 PALIC, SERBIA TEL: (01) 24 539 395 SLOVAKIA DAN Acoustic s.r.o. Povazska 18, SK - 940 01 Nové Zámky, SLOVAKIA TEL: (035) 6424 330 SPAIN Roland Systems Group EMEA, S.L. Paseo Garcia Faria, 23-35 08005 Barcelona, SPAIN TEL: (0) 9 493 91 00 SWEDEN Roland Scandinavia A/S SWEDISH SALES OFFICE Malmöskogsgatan 31, 4 tr. SE-123 43 Farsta, SWEDEN TEL: (0) 8 683 04 30 SWITZERLAND AG Landstrasse 5, Postfach CH-4452 Hingen, SWITZERLAND TEL: (061) 975-9987 TURKEY ZUHAL DIS TICARET A.S. Galip Dede Cad. 23-35 Beşiktaş, Istanbul, TURKEY TEL: (0212) 249 85 10 UKRAINE EUHRTHMICS Ltd. P.O.Box 37 a Nedelyev Str. 30 UA - 89600 Mukachevo, UKRAINE TEL: (03131) 414-40 UNITED KINGDOM Roland (U.K.) Ltd. Atlantic Close, SWANSEA SA7 9FL, UNITED KINGDOM TEL: (01792) 702701	IRAN MOCO INC. Jafar Mahdous Karaj (K-9), Nahke Zarin Ave. Jahad Street, Reza Alley No.4 Tehran 1389716791, IRAN TEL: (021) 44545370-5 ISRAEL Halteri T. Greenspoon & Sons Ltd. 8 Reizel Ha'ala Hashina St. Tel Aviv-Yafo ISRAEL TEL: (03) 6823666 JORDAN MUSIC HOUSE CO. LTD. FREDDY FOR MUSIC P.O. Box 922846 Amman 11 192, JORDAN TEL: (06) 5602906 KUWAIT EASA HUSAIN AL-YOUSIFI & SONS CO. Al-Yousifi Service Center P.O.Box 126 (Safat) 13002, KUWAIT TEL: 00 965 802929 LEBANON Chahine S.A.L. George Zaidan St., Chahine Bldg., Achrafieh, PO.Box: 16-5857 Beirut, LEBANON TEL: (01) 20-1441 OMAN TALENTZ CENTER L.L.C. Malaikan House No.1 Al Noor Street, Omani SULTANATE OF RUWAL TEL: 2478 3443 QATAR AL-EMADI TRADING & CONTRACTING CO. P.O. Box 62, Doha, QATAR TEL: 4423-554 SAUDI ARABIA Adawiah Universal Electronics APL Behind Pizza Inn Prince Turkey Street Adawiah Building, PO Box 2154, Al Khobar 31952, SAUDI ARABIA TEL: (03) 8643601 SYRIA Technical Light & Sound Center PO Box 13520 Bldg No.49 Khalded Abn Alwadi St., Damascus, SYRIA TEL: (011) 223-5384 U.A.E. Adawiah Universal Electronics APL Omair bin Abdalrahman street, fish round about, nuyef area, deira, Dubai, U.A.E. TEL: (06) 2934042 NORTH AMERICA CANADA Roland Canada Ltd. 5480 Parkwood Hwy Richmond B.C. V6V 2M4, CANADA TEL: (604) 270 6626 Roland Canada Ltd. (Toronto Office) 170 Admiral Roadstead Mississauga On L7T 2N6, CANADA TEL: (905) 362 9707 U. S. A. Roland Corporation U.S. 5100 S. Eastern Avenue Los Angeles, CA 90040-2998, U.S.A. TEL: (323) 890 3700
--	--	--	--	---

As of Apr. 1, 2013 (ROLAND)

For C.A. US (Proposition 65)

WARNING

This product contains chemicals known to cause cancer, birth defects and other reproductive harm, including lead.

