

# nord electro 4D

SEMI WEIGHTED WATERFALL SW 61

## **User Manual Nord Electro 4D**

OS Version 1.x



**CAUTION: TO REDUCE THE RISK OF ELECTRIC SHOCK DO NOT REMOVE COVER (OR BACK). NO USER SERVICEABLE PARTS INSIDE. REFER SERVICING TO QUALIFIED PERSONNEL.**

**ATTENTION: POUR EVITER LES RISQUES DE CHOC ELECTRIQUE, NE PAS ENLEVER LE COUVERCLE. AUCUN ENTRETIEN DE PIECES INTERIEURES PAR L'USAGER. CONFIER L'ENTRETIEN AU PERSONNEL QUALIFE.**

**AVIS: POUR EVITER LES RISQUES D'INCIDENTE OU D'ELECTROCUTION, N'EXPOSEZ PAS CET ARTICLE A LA PLUIE OU L'HUMIDITET.**



The lightning flash with the arrowhead symbol within an equilateral triangle is intended to alert the user to the presence of uninsulated voltage within the products enclosure that may be of sufficient magnitude to constitute a risk of electric shock to persons.

*Le symbole éclair avec le point de flèche à l'intérieur d'un triangle équilatéral est utilisé pour alerter l'utilisateur de la présence à l'intérieur du coffret de "voltage dangereux" non isolé d'ampleur suffisante pour constituer un risque d'électrocution.*



The exclamation mark within an equilateral triangle is intended to alert the user to the presence of important operating and maintenance (servicing) instructions in the literature accompanying the product.

*Le point d'exclamation à l'intérieur d'un triangle équilatéral est employé pour alerter l'utilisateur de la présence d'instructions importantes pour le fonctionnement et l'entretien (service) dans le livret d'instructions accompagnant l'appareil.*

Instructions pertaining to a risk of fire, electric shock or injury to persons.

## IMPORTANT SAFETY INSTRUCTIONS

### SAVE THESE INSTRUCTIONS

**Warning** - When using electric products, basic precautions should always be followed, including the following:

- 1) Read these instructions.
- 2) Keep these instructions.
- 3) Heed all warnings.
- 4) Follow all instructions.
- 5) Do not use this apparatus near water.
- 6) Clean only with dry cloth.
- 7) Do not block any ventilation openings. Install in accordance with the manufacturer's instructions.
- 8) Do not install near any heat sources such as radiators, heat registers, stoves, or other apparatus (including amplifiers) that produce heat.
- 9) Do not defeat the safety purpose of the polarized or grounding-type plug. A polarized plug has two blades with one wider than the other. A grounding type plug has two blades and a third grounding prong. The wide blade or the third prong are provided for your safety. If the provided plug does not fit into your outlet, consult an electrician for replacement of the obsolete outlet.
- 10) Protect the power cord from being walked on or pinched particularly at plugs, convenience receptacles, and the point where they exit from the apparatus.
- 11) Only use attachments/accessories specified by the manufacturer.
- 12) Use only with the cart, stand, tripod, bracket, or table specified by the manufacturer, or sold with the apparatus. When a cart is used, use caution when moving the cart/apparatus combination to avoid injury from tip-over.
- 13) Unplug this apparatus during lightning storms or when unused for long periods of time.
- 14) Refer all servicing to qualified service personnel. Servicing is required when the apparatus has been damaged in any way, such as power-supply cord or plug is damaged, liquid has been spilled or objects have fallen into the apparatus, the apparatus has been exposed to rain or moisture, does not operate normally, or has been dropped.



### Additional Safety Information

No naked flame sources, such as lighted candles, should be placed on the apparatus;

Do not use the apparatus in tropical climates.

**WARNING:** To reduce the risk of fire or electric shock, do not expose this apparatus to rain or moisture.

The apparatus shall not be exposed to dripping or splashing and that no objects filled with liquids, such as vases, shall be placed on the apparatus.

The mains plug is used as the disconnect device and shall remain readily operable.

Il convient de ne pas placer sur l'appareil de sources de flammes nues, telles que des bougies allumées;

L'appareil n'est pas destiné à être utilisé sous un climat tropical.

L'appareil ne doit pas être exposé à des égouttements d'eau ou des éclaboussures et de plus qu'aucun objet rempli de liquide tel que des vases ne doit être placé sur l'appareil.

Lorsque la prise du réseau d'alimentation est utilisée comme dispositif de déconnexion, ce dispositif doit demeurer aisément accessible.

**Trademarks:** The Nord logo is a trademark of Clavia DMI AB. All other trademarks mentioned in this publication are the properties of their respective holders.

Specifications and appearances are subject to change without notice.

Copyright © Clavia DMI AB



Intertek

# Nord Electro 4D Table of Contents

## 1 Introduction

<b>Thank you!</b> .....	4
<b>About this manual</b> .....	4
<b>Disclaimer</b> .....	4
<b>OS and internal memory</b> .....	4
<b>Factory presets</b> .....	4
Restoring the factory presets .....	4
<b>OS upgrades</b> .....	4

## 2 Overview

<b>Knobs &amp; buttons</b> .....	5
Knobs .....	5
Selector buttons .....	5
On/Off buttons .....	5
Shift button .....	5
Drawbars .....	5

## 3 Connections

<b>Audio connections</b> .....	6
Headphones .....	6
Left Out and Right Out .....	6
Monitor In .....	6
<b>MIDI Connections</b> .....	6
MIDI Out .....	6
MIDI In .....	6
<b>USB Connection</b> .....	6
<b>Pedal Connections</b> .....	7
Sustain Pedal .....	7
Rotor Pedal .....	7
Control Pedal .....	7

## 4 Getting Started

<b>About the programs</b> .....	8
<b>Selecting programs</b> .....	8
<b>Edit a program</b> .....	8
<b>Selecting pianos, samples</b> .....	8
<b>Using the Organ</b> .....	9
<b>The Rotary effect</b> .....	9
<b>Memory Protection</b> .....	9
<b>Storing a program</b> .....	10
<b>The Live buffer</b> .....	10
<b>Octave Shift</b> .....	10
<b>Adding effects</b> .....	10
Activate an amplifier emulation .....	10
<b>The Delay</b> .....	10

## 5 Nord Electro 4D Reference

Master level knob .....	11
<b>Organ section</b> .....	11
Organ Model button .....	11
The B3 model .....	11
The VX model .....	11
The Farf model .....	11
Rotary Speed .....	12
Vibrato/Chorus .....	12
Percussion .....	12
Preset/Drawbar/Split .....	12
Additional MIDI keyboard .....	13
The drawbars .....	13
<b>Piano section</b> .....	13
Clavinet sound .....	13
Pick-up type .....	13
Pick-up Type Description .....	13

Clav EQ .....	13
Acoustics .....	13
Samp Env .....	14
Piano Type .....	14
Mono .....	14
Model .....	14

<b>Program section</b> .....	14
Up/Down buttons .....	14
Display .....	14
Store .....	14
Live Mode .....	14
Instrument selectors .....	15
Shift .....	15
Octave Shift .....	15
<b>Effects</b> .....	15
EQ .....	15
Effect 1 .....	15
Effect 2 .....	15
Speaker/Comp .....	15
Reverb .....	16
Delay / Reverb .....	16
Feedback .....	16
Ping Pong .....	16
Tempo Tap .....	16
Gain .....	16

## 6 The Menus

<b>System Menu</b> .....	17
1 - Memory Protect – On, Off .....	17
2 - Output Routing .....	17
3 - Transpose .....	17
4 - Fine Tune .....	17
5 - Sustain Pedal Polarity .....	17
6 - Rotor Pedal Polarity .....	17
7 - Sustain Pedal Mode .....	17
8 - Rotor Pedal Mode .....	17
9 - Ctrl Pedal Type .....	17
10 - Ctrl Pedal Mode .....	18
11 - Organ Trig Mode .....	18
<b>MIDI Menu</b> .....	18
1 - Local Control .....	18
2 - MIDI Interface .....	18
3 - MIDI Channel .....	18
4 - Lower Channel .....	18
5 - Control Change (CC) Mode .....	18
6 - Program Change Mode .....	18
7 - MIDI Split Mode .....	18
8 - Dump One .....	18
9 - Dump All .....	18
10 - Send CC .....	18
<b>B3 Menu</b> .....	19
1 - Tonewheel Mode .....	19
2 - Key Click Level .....	19
3 - Key Bounce .....	19
4 - Perc. Fast Decay .....	19
5 - Perc. Slow Decay .....	19
6 - Perc. Norm Level .....	19
7 - Perc. Soft Level .....	19
8 - Perc Drawbar 9 Cancel .....	19
<b>Rotary Menu</b> .....	19
1 - Rotary Model .....	19
2 - Balance Bass/Horn .....	19
3 - Treble Horn Speed .....	19
4 - Bass Rotor Speed .....	19
5 - Treble Horn Acceleration .....	19
6 - Bass Rotor Acceleration .....	19

## 7 Nord Sound Manager

System requirements .....	20
<b>Installation</b> .....	20
USB Driver .....	20
Sound Manager .....	20
<b>Overview</b> .....	20
The Toolbar .....	21
The Tabs .....	21
Partition Memory Indicator .....	21
Right-Clicking .....	21
File Formats .....	21

<b>The Quick Tour</b> .....	22
Transfer pianos to the Electro 4D .....	22
Deleting a piano .....	22
Download a new sound .....	22
Replace .....	22
Relink .....	23
Download Queue .....	23
Upload sounds .....	23
Program Bundles .....	23
Upload a Program Bundle .....	24
Downloading a Bundle .....	24
Organize the program partition .....	25
Search Box .....	25
Auto Select .....	25
Backup .....	25
Restore .....	25
<b>Sound Manager reference</b> .....	26
Toolbar .....	26
<b>Menus</b> .....	28
File Menu .....	28
Edit Menu .....	28
View Menu .....	29
Help .....	29
<b>Tabs</b> .....	29
Piano – Samp Lib - Program - Synth .....	29
Search Box .....	29
Loc - Location .....	29
Name .....	29
Category .....	29
Size .....	29
Ver – Version Number .....	29
Note .....	30
Footer Area .....	30
Partition Memory Indicator .....	30
Cancel Button .....	30
Progress Bars .....	30
Message/Text Area .....	30
Updates and sounds .....	30

## 8 MIDI functions

About the MIDI implementation .....	31
Keyboard velocity .....	31
Program change .....	31
MIDI Sysex (System Exclusive) .....	31
<b>With a sequencer</b> .....	31
Connections .....	31
Local On/Off .....	31
MIDI Channel .....	31
Program Change .....	31
Controllers .....	31
About controllers and “chasing” .....	31
<b>Program and CC dumps</b> .....	32
Sending program dumps .....	32
Sending MIDI Controller dumps .....	32
Receive MIDI SysEx dumps .....	32
MIDI Controller list .....	32
MIDI Implementation Chart .....	33

## 9 Index

Index .....	34
-------------	----

# 1 Introduction

## Thank you!

We'd first like to thank you for purchasing the Nord Electro 4D. Our goal when we developed the Nord Electro instruments was to create the best emulations of traditional electromechanical keyboard instruments on the market, and to make these instruments compact and lightweight. With the Electro 4D we have taken our commitment a step further by adding physical drawbars, upgrading the organ and the piano and the effects sections and also by the ability to use sampled instruments from the Nord Sample Library .

This allows us to for example include some of the fabulous Mellotron sounds in the factory sound bank. Each and every piano and sample in the Nord Electro 4D can be replaced by you, using the free Nord Sound Manager application. New pianos and other sounds are found on the enclosed Nord DVD and on the [www.nordkeyboards.com](http://www.nordkeyboards.com) web site.

No compromises, just a good selection of outstanding, classic keyboard sounds with true feel, from a natural keyboard response to the authentic sound quality – that is what we have been pursuing during the development. To make a great tool you have to put all the focus on a few things and that is exactly what we tried to achieve. We hope that you will have as much fun owning and using the instrument, as we had developing it.

The physical drawbars and the improved B3 engine on the Electro 4D are the icing of a splendid cake. We sincerely hope that you two will have a lot of fun together!

## About this manual

You are probably very eager to start using your new instrument, and we sure don't want to keep you from having fun. We will try to cover all the essential aspects on how to use the Electro 4D in the very first few pages of this manual. After that follows the reference section where all the functions are explained in detail.

## Disclaimer

All trademarks and brand names mentioned in this manual are the property of their respective owner's and are not affiliated or associated with Clavia. These trademarks and brand names are only mentioned to describe the types of sounds reproduced by Nord Electro 4D.

## OS and internal memory

The operating system, programs and pianos and samples in Nord Electro 4D are stored in a Flash memory. A Flash memory keeps the data also when the power is turned off. Another big advantage is that you can replace data in the Flash memory at any time. This means that you will be able to download OS upgrades, pianos and samples and programs to your Nord Electro 4D from a computer. The Nord Electro 4D features a USB port for quick and easy download of new piano and/or instrument samples.

## Factory presets

The internal sound memory of Nord Electro 4D consists of 128 programs. In addition there is the Live buffer memories, which will continuously store any changes as they are made, and remember these settings after the power is turned off.

All of the 128 factory Programs of Nord Electro 4D can be replaced. To make sure you don't accidentally overwrite Programs you want to keep, it's a good idea to back up your sounds regularly on a computer using the Nord Sound Manager application.

## Restoring the factory presets

The factory Programs are available as Nord Sound Manager backup files for download at the Nord web site at [www.nordkeyboards.com](http://www.nordkeyboards.com) or on the included Nord DVD.

## OS upgrades

The latest OS version for Nord Electro 4D series is available for download at the [www.nordkeyboards.com](http://www.nordkeyboards.com) website.

# 2 Overview



The front panel of the Nord Electro 4D has four main areas, Organ, Piano, Program and Effects. We'll familiarize ourselves briefly with the panel here and describe the functions in detail in the following chapters.

On the left part of the panel is the Master Level knob, the organ model selector and the Rotary Speed section. The Master level controls the entire instruments output level at the two output jacks and the headphone output. This control is not programmable, that particular functionality is instead available in the effects section with the Gain control.

The Organ section is lit and active when the Organ selector in the Program area is activated.

Moving towards the middle of the panel, the Piano section behaves just as the organ. The controls are lit when the Piano selector is active.

The Program section contain the parameters and functions that are used to select and store programs, to set the System, MIDI, B3 and Rotary menu settings and to select the instrument to be used with the Organ or Piano selectors. We'll describe the functions in this area in greater detail starting at page 14.

The Effect section contains the functions of the effects. Please refer to page 15 for more information.

The functions and settings of the System, MIDI, B3 and Rotary menus are conveniently printed to the right on the panel.

## Selector buttons

Selector buttons are used to activate one setting in an array. Selector buttons have a set of round or triangular LEDs to indicate the current setting. Press the button several times to cycle through the possible options.



*Holding Shift and pressing a selector button (with the exception of the Type button) will cycle through the settings in a counter clockwise fashion.*

## On/Off buttons

On/Off buttons are used for activating a parameter or a group of parameters such as effects.



## Shift button

Some buttons have a secondary function, which will be available if you hold down Shift while pressing the button. The name of the secondary function is printed below the button. Shift is also used together with the Up/Down buttons when you want to change a setting in the System, MIDI or Sound menus.



## Knobs & buttons

### Knobs

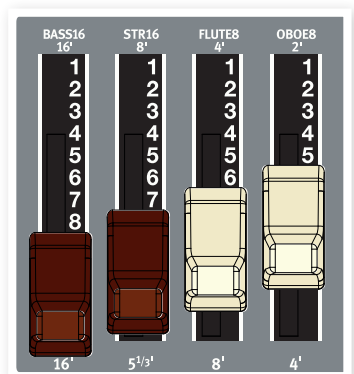
The knobs control the continuously variable parameters in the Nord Electro 4D.

**i** A parameter value can be totally different from the knob's physical position when you load a Program. As soon as you start turning the knob, the value will 'snap' to the knob's physical position.

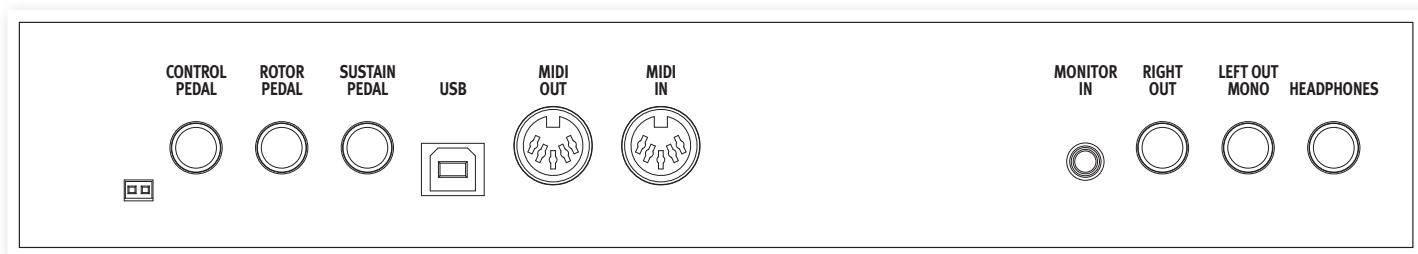


### Drawbars

The nine drawbars on the Nord Electro 4D allow you to sculpt the organ sound in real time. Their positions will be stored in the programs, for immediate access.



# 3 Connections



## Audio connections

### Headphones

This is where you connect a 1/4" stereo connector from a pair of headphones.

### Left Out and Right Out

The left and right line level outputs from the Nord Electro 4D are unbalanced. Use 1/4" connectors to connect the Nord Electro 4D to an amplifier or recording equipment.

The Nord Electro 4D is a stereo instrument, with separate signal paths for the left and right audio channels. To properly experience the Electro 4D, use both outputs in a stereo operation.

The System functions allow you to separate the pianos/samples and the organ sounds in the left and right outputs. Read more about this functionality on page 17.

General guide on audio connections:

- Make all the connections before you turn on the power to your amplifier.
- Turn on the power to your amplifier last.
- Turn off the power to your amplifier first.

**⚠** *Playing at a high volume level can result in hearing impairments such as permanent hearing loss.*

### Monitor In

Use this to connect and monitor a signal from an mp3 or a CD player at the Nord Electro 4D's headphone output. This allows you to e.g. rehearse with the Electro 4D to pre-recorded music.

- **i** *Signals connected to this input will not be processed with the Electro 4D's effects or appear at the Electro 4D's left and right output jacks.*

## MIDI Connections

### MIDI In

MIDI connection used to receive MIDI data to the Nord Electro 4D from other equipment such as keyboards or computers.

### MIDI Out

MIDI connection used for sending keyboard and panel generated MIDI data from the Nord Electro 4D to other equipment such as sound modules or computers.

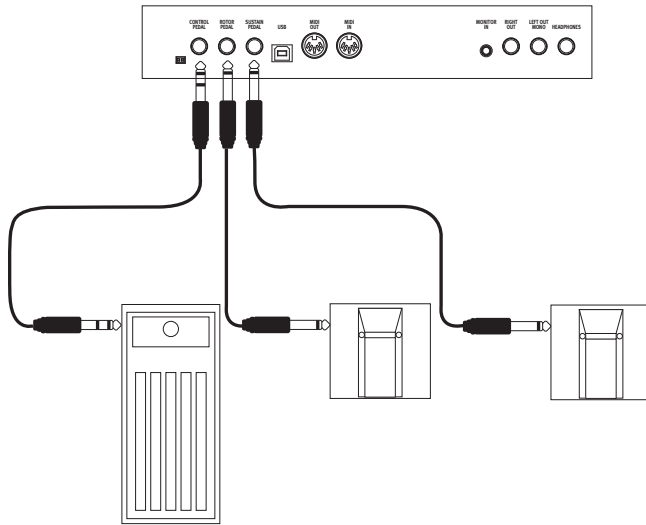
## USB Connection

The USB connection is used for the Nord Electro 4D to communicate with a personal computer in order to update the OS or to add or replace any of the piano and/or sampled sounds. The computer can run the Nord Sound Manager application, or be used to transfer the operating system if the unit needs to be updated.

The Nord Electro 4D can also transmit and receive MIDI data via the USB interface, read more about this in the MIDI chapter.

- **i** *Computers running Microsoft Windows operating systems need a driver for the USB connection to work. The driver can be found on the enclosed Nord DVD, or at the [www.nordkeyboards.com](http://www.nordkeyboards.com) website.*

## Pedal Connections



The Nord Electro 4D has three pedal inputs; a sustain pedal, a pedal to control the rotor speed and a control pedal (an expression type pedal), which can be used to control various parameters.

### Sustain Pedal

1/4" connector for a switch type pedal. When a connected pedal is operated, the notes you play will be sustained.

### Rotor Pedal

1/4" connector for a switch type pedal. When a connected pedal is operated, the rotary speed will change.

**i** Two types of pedal polarities can be used with these inputs; you select the one that applies to each pedal, in the System menu which is described on page 17.

**💡** It is possible to use only one pedal connected to the sustain pedal input to control sustain for piano sounds and rotary speed selection for organ sounds (see page 17 for details on how to configure this).

### Control Pedal

1/4" stereo connector for a pedal of the potentiometer type (also known as expression pedals). A connected pedal can be used as a swell pedal for the organs, a volume pedal for pianos and samples and also as a controller for two of the effects: the P-wah and the ring modulator (RM).

When connecting an expression pedal to the Control Pedal input, you should use a stereo cable with a Tip-Ring-Sleeve connector. Please note that the pedal must have a stereo output jack. The resistance range of a control pedal should be 10 or 50 kOhm. To simplify setup, the most common pedal models (Roland, Yamaha, Korg and Fatar) are pre-configured in the Nord Electro 4D, and you simply select the type of pedal which you want to use in the System menu, see page 17.

# 4 Getting Started

Let's take a few minutes to get familiar with the Electro 4D. The user interface is designed to be as intuitive as possible, and to perform as well as you do in a live situation. We hope that you soon will feel confident in using it, and by following this short chapter, we will go through most of the functions.

## About the programs

Sound and effect settings are stored in the Program memory of the Nord Electro 4D. The Electro 4D organizes the memory in 32 pages with 4 programs in each page, making this a total of 128 programs.

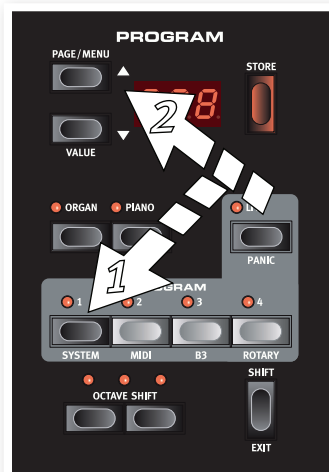
Every program can be changed and replaced as you wish. A complete set of the factory programs are available on the Nord DVD that accompanies the unit and on our website. This allows you to get back to the factory settings, should you wish to do so, using the Sound Manager. The chapter about the Nord Sound Manager begins with a separate tour, on page 22.

## Selecting programs

Use the Up/Down buttons to the left of the LED display to select the page and the program buttons 1 ~ 4 to select the programs within each page. The page and program number will be displayed in the LED.

When the Electro 4D leaves the factory, the first 16 or so pages are organized to make it easier for you to quickly check out sounds from specific instrument groups. The 1st programs in each page are organs, the 2nd programs are acoustic pianos, the 3rd program are electric pianos and the 4th programs are sample based instruments.

- 1 Press the Program 1 button to listen to a B3 organ program, 1.1.
- 2 Press the Up button to get to the next organ program, 2.1. Keep pressing the Up button until you are ready for the next instrument group.
- 3 Press and hold the Down button to get back to 1.1, and then the Program 2 button to listen to the acoustic grand on the 1.2 location.



- 4 Press the Up button to get to the next acoustic piano.

You can of course organize the programs in any order you want. Such a process can be done quite easily by using the drag and drop features in the Nord Sound Manager.

## Edit a program

Editing a program is just as easy as grabbing a knob and change a setting, or press a button to select a different setting. The knob's physical position isn't always as the stored setting in the program that is active, but as soon as you start turning a knob, the parameter will snap to the knob's position.

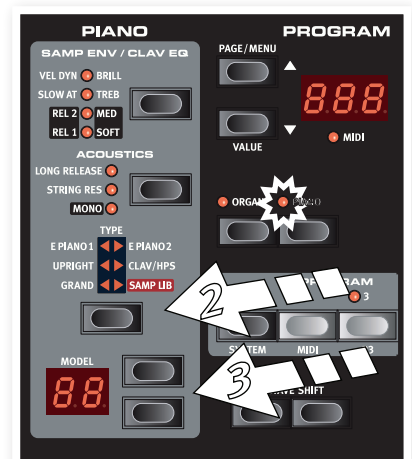
When you have edited a program, a dot will appear in the lower right display corner next to the program number.



This will alert you to the fact that the program has been edited but not yet saved. If you select a new program without saving, any edits you have made will be lost and the program will have its original settings the next time you select it.

## Selecting pianos, samples

- 1 Select a program where the Piano instrument is active. The LEDs on the piano section and the Selector LED for the piano will be lit.
- 2 Press repeatedly on the Piano Type selector to cycle through the types.
- 3 Press the Model buttons to select the various piano models within the selected type.
- 4 Press the Type selector again until the Samp Lib is activated.



Use the Model selector buttons to select one of the samples that are included in the Electro 4D from the factory.

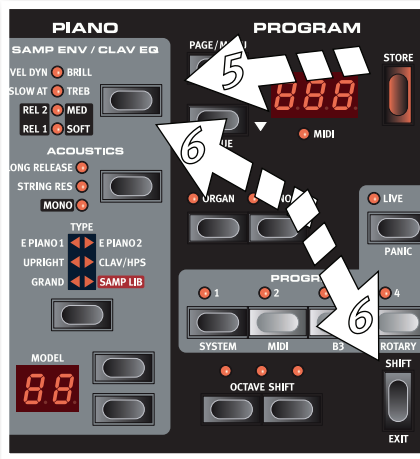
- Press the Samp Env button repeatedly.

This will cycle through the four options for the sample's attack and velocity settings.

- Press and hold Shift and the Samp Env button.

This allows you to select one of the four available release time settings.

- This button doubles as the Clavinet EQ selector, when the Clavinet type is active.*



## Using the Organ

- Press the Organ instrument selector above the program 1 - 4 buttons.

This activates the Organ section.

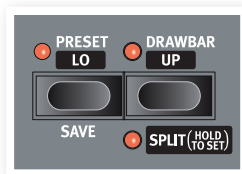


- Press the Organ Model selector on the left side of the panel, below the master level knob, repeatedly to cycle through the three organs – the B3, Vox and Farfisa emulations.

The settings for the three organ instruments are made using the drawbars. The Farfisa uses these in a switching mode, with only two settings (on or off) for each.



- Press the Drawbar button and make a setting with the drawbars to change the sound. When the physical position of the drawbars matches the programmed setting in the program, the drawbar LED will be lit.



- Press and hold Shift and the Drawbar/Split button.

This activates the organ split mode. The keyboard will be split at C4.

The lower half will use the Lo setting; the upper half will use the Up setting.

- If you press and hold both the Shift and the Preset/Split buttons for a couple of seconds, the Split LED will begin to flash and you can press a key on the keyboard to set a new split point as long as these buttons are held down. The key you press will be the first upper manual key.*

## The Rotary effect

The rotary effect adds some great sonic drama to the organs, but can of course be used with any other sound as well. The Electro 4D rotary has three available speeds: fast, slow and stop. Stop does not disengage the effect; it only stops the rotating speakers.

- Make sure that the Speaker/Comp effect is activated and select the Rotary by pressing the effect selector until both the upper LEDs are lit.

The drive knob now controls the overdrive of the rotary amplifier.

- Press the Slow/Stop button in the Rotary Speed section to the left on the panel, to cycle between the Fast and Slow speeds of the rotary.

The rotors will speed up and slow down, producing a nice swirly effect without the negative side effects that e.g. alcohol intake might induce.

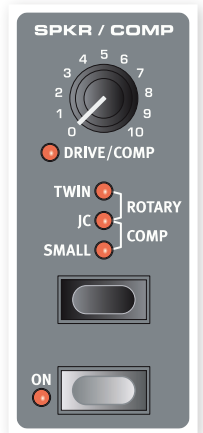
- Press the Stop mode button to activate this one-speed mode.

The Stop Mode LED will be lit.

- Press repeatedly on the Slow/Stop button to cycle between Fast and Stop.

The rotary will now emulate the functionality of an early, one speed original rotary speaker that had only the fast and the stopped rotary speed options.

- If you connect a foot switch to the rotor pedal input, you can control the rotary speed with this pedal.*



## Memory Protection

When the Nord Electro 4D is shipped from factory, the memory protect is turned on to prevent you (or your cat) from accidentally overwriting any of the original programs. Before you can store any of your own programs, this memory protect feature has to be turned off by toggling a setting located in the System menu.

- Hold Shift and press the Program 1 button to enter the System Menu.
- The very first item in the System Menu is the Memory Protection. Use the Down button to get to the first item if this isn't already active.
- Hold Shift and press the Down button to switch from the On setting to the Of setting.



- Press shift to exit the system menu. The memory protection will now remain in the Off setting until you change it again.

## Storing a program

If you are happy with a change to a program that you have made, you should probably store the program.

- 1 Press the Store button.

The program number in the LED starts flashing.

- 2 Select a new location where you want to store the program.

Use the Up/Down buttons and the program buttons to navigate to a new program location if you do not want to overwrite the original program.

- 3 Press the Store button a second time to confirm your choice.

The edited program has now replaced the previous one in the location you specified.

- ❗ To cancel the procedure, press the Shift button before you press Store the second time.

- ❗ With Memory Protect set to Off, a double tap on the Store button will store a Program in its original location.



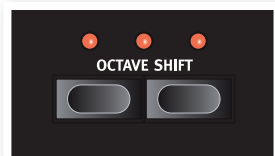
## The Live buffer

The special Live buffers can be described as a “live program memory”. If you activate the Live button, all changes to the panel settings you make will be continuously saved in the active Live program (1-4). If you switch the power off, or select another program, the settings are still stored in the Live memory, so when you power up next time (or return to the Live memory) all settings will be exactly as they were when you left them.

If the Live memory is selected and you decide you wish to store the settings permanently as a program you can do so using the standard methods (see above). You can also store programs into the Live memory location, in which case the program settings will replace the current Live memory settings.

## Octave Shift

Press either of the Octave Shift buttons to shift the pitch up or down in whole octaves within the instrument's note range. Each instrument has a finite note range, read more about this in “Octave Shift” on page 15.



## Adding effects

- 1 Select the program number 1.2 which is a Grand Piano with a hint of reverb.
- 2 Turn on Effect 2 (the On LED should be lit) and press repeatedly on the Effect 2 selector.

The effect options are indicated with the selector LEDs and changes in a cyclical, clockwise fashion for each time the selector is pressed.

Some of the effects have three options that indicate the depth of the effect. Flang 1 is the shallowest version, Flang 2 is a more pronounced effect and when both the Flang 1 and Flang 2 LEDs are lit, you have selected the most dramatic flanger effect.

- 3 Turn the effect rate knob.

This changes the rate of the active effect.

- 4 Hold Shift and press repeatedly on the effect selector.

This allows you to reverse through the effect selections.

- 5 Turn off the effect.

If you now continue to press on the effect selector after the effect is turned off, the effect setting will change even though the effect is not active.



## Activate an amplifier emulation

- 1 Press the Speaker/Comp button to activate the Amp emulation.

The Speaker/Comp LED will be lit.

- 2 Press repeatedly on the selector to cycle through the various options.

The knob controls the drive for the three amps and the rotary simulator, and the amount when the compressor is selected.

## The Delay

- 1 Activate the delay/reverb.
- 2 Hold Shift and press the reverb selector button. The Delay LED lights up.
- 3 Tap the desired tempo on the Tempo Tap button.
- 4 You can also set the delay time by holding the Tempo Tap button and adjust the tempo with the Up/Down buttons.
- 5 Adjust the number of repeats (Dly1, Dly2 etc.) by pressing the selector button repeatedly.



***This finishes our little tour; we hope that you now have the initial knowledge on how to operate most of the functions on the panel. There is another Quick Tour in the Sound Manager chapter.***

# 5 Nord Electro 4D Reference

## Master level knob

This control sets the overall output level of the Electro 4D, at the line and the headphone outputs. This is not a programmable control. If you want to set an output level for a particular program, this can be achieved with the Gain control.

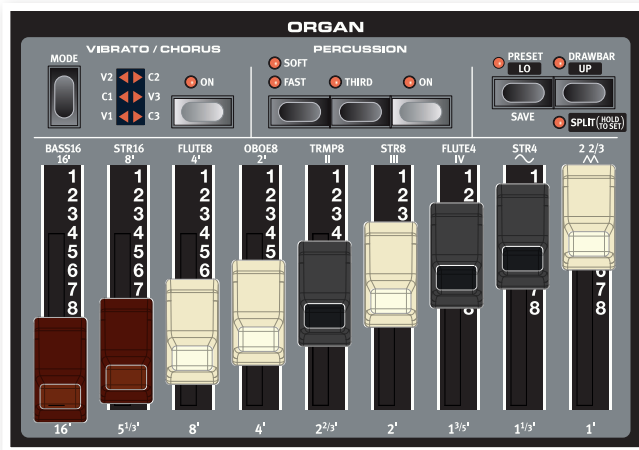


16' 5<sup>1/3</sup>' 8' 4' 2<sup>2/3</sup>' 2' 1<sup>3/5</sup>' 1<sup>1/3</sup>' 1'

Each drawbar represents a partial with a fixed harmonic interval relating to the played note. Note that the 5 <sup>1/3</sup> drawbar is a 5th above the fundamental harmonic although, in most situations it is perceived as sounding below the fundamental harmonic.

💡 Do not forget to try out the four tonewheel modes that are available in the B3 menu, see page 19. These will dramatically change the sound of the B3 model from squeaky clean to a battered, old work horse.

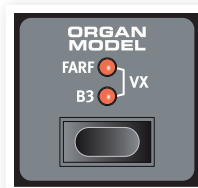
## Organ section



The Organ section in the Nord Electro 4D features emulations of three classic organ models; a B3, a Vox Continental II (Vx model) and a Farfisa Compact DeLuxe (Farf model).

## Organ Model button

You select which organ model to use, with the Organ Model button.



## The B3 model

This model is a digital simulation of the classic mechanical tone wheel organ. This simulation utilizes innovative and advanced methods to capture every nuance of the original sound, for example:

- An extremely accurate digital model of the original chorus and vibrato scanner.
- Modeling of the individual random contact bounces for each harmonic.
- Modeling of the unique frequency characteristics of the built-in pre-amplifier which forms the “body” of the sound.
- Simulation of the energy robbing in the tone wheel architecture that creates the typical “compressed” sound.
- Authentic tuning of the tone wheels according to the original design.
- Extremely fast keyboard response.
- Full polyphony.

## The VX model

The original instrument is probably the most famous of all the transistor-based combo organs that emerged in the early 60's. Transistor technology made it possible to manufacture much more compact and portable organ instruments. Compared to the mighty sound of tone-wheel organs, transistor organs generally sounded reedier and weaker, but this one had a distinctive, timeless sound and is recreated faithfully in the Nord Electro 4D.

The labels used for the VX model drawbars are printed on the row directly above the drawbars. The drawbars on the Electro 4D's VX emulation control the level of each available partial, in the same fashion as on a dual manual original Continental. The upper manual uses the 16, 8, 4, II and III registers and the lower manual uses the 8, 4, 2 and IV registers. Each register represents a fixed harmonic interval, or groups of intervals (the II, III and IV) in a relationship to the played note.

16' 8' 4' 2' II III IV ~ ^

The two rightmost drawbars control the sum of all partials in the form of a filtered, soft and dark sounding signal (the sine icon), and an un-filtered signal with a bright and intense sound (the triangular icon).

❗ If these drawbars are both fully set to the lowest level, the organ will produce no sound.

## The Farf model

This typical “buzzy” sound of this vintage instrument is one of the most distinct and easily recognizable organ sounds ever created, yet it is actually possible to get quite a wide range of sounds out of the instrument.

The labels used for the Farf model drawbars are printed on the upper row above the drawbars.

BASS16 STR16 FLUTE8 OBOE8 TRMP8 STR8 FLUTE4 STR4 2 2/3

The drawbars act as on/off switches, or “Register selectors” when the Farf model is selected.

## Rotary Speed

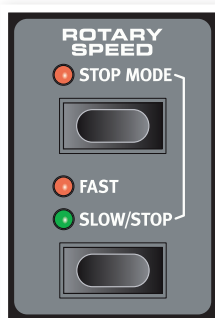
The rotary speaker speed is controlled with the rotary speed buttons or with an external pedal connected to the rotor pedal input on the rear panel.

Press the Slow/Stop button to change the rotation from Slow to Fast and vice versa.

To stop the rotors, press the Stop Mode button to activate the Stop Mode and then the Slow/Stop button (this does not deactivate the Rotary Speaker simulation - it only stops the rotors). When you press the Slow/Stop button again the rotors will accelerate to the Fast speed setting. This functionality mimics the behavior of an early, one speed original rotary speaker.

A connected pedal can be set to change the speeds only when it is held down or to function like a switch, changing the speed every time you press it. This functionality is set in the System menu, read more on this on page 17.

**i** The actual rotary simulation is activated at the Effects section, with the Speaker/Comp selector.



## Vibrato/Chorus

The Vibrato/Chorus section mimics the behavior of the original organs, which means that these parameters functionality depends on which model is active. Select the desired vibrato or chorus type by repeatedly pressing the Mode button. The Vibrato/Chorus section is common for both the upper and lower presets, if the split function is active.



**B3** – The original tonewheel organ's vibrato and chorus scanner consists of a tapped delay line in combination with a rotating scanner. For the Vibrato effect, phase shift is applied to the signal. For the Chorus effect, a phase modulated signal is added to the original signal. Three different types of choruses (C1- C3) and three different types of vibratos (V1-V3) are available.

**VX** - There is only one type of vibrato available for the VX model, which is activated using the ON button in the Vibrato section.

**Farf** - This model has two basic vibrato modes; "Light" and "Heavy", with two different rates for each mode.

## Percussion

The Percussion effect adds extra attack to the B3 sound by having a single envelope generator controlling either the 2nd or the 3rd harmonic. The envelope "opens up" for a short moment in the beginning of the sound when you press the key(s). The percussion will only affect the upper manual if the Split function is active.



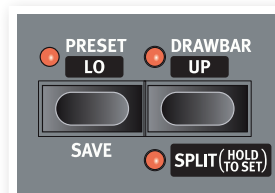
The Percussion is a single-triggered non-legato effect. It is only present when you hit the keys when no other note is sounding. In other words, if you play a note or a chord and then add on more notes without releasing the previously pressed keys, there will be no percussion effect in the new notes. You have to release all keys to be able to play new notes with the percussion effect.

The percussion effect is activated and deactivated by pressing the On button. The Soft/Fast button toggles between normal or soft percussion levels and fast or slow decay times, providing four available combinations. The Third button toggles between using the 2nd or 3rd partial as the source for the percussion effect. The percussion decay times (and levels) can be fine-tuned for Fast and Slow mode individually. Please refer to the B3 Menu on page 19 for details.

**i** With the original instrument, you could not use the percussion effect and 9th drawbar simultaneously. However with the Nord Electro 4D you have a choice. You can use the percussion and 9th drawbar together or chose to mimic the original organ behavior by turning off the 9th drawbar whenever the percussion is activated. Read more on the Perc Drawbar 9 setting in the B3 menu on page 19.

## Preset/Drawbar/Split

Use the Preset/Lo and Drawbar/Up buttons to store and recall two separate organ settings for each program.



When Preset is active (the LED lit), the drawbar settings in the preset will be used, and the drawbars on the panel will not affect the sound. This allows you to use one setting, and prepare the drawbars on the panel with a new setting to which you can change during the performance.

**i** B3 Presets will store the Chorus/Vibrato and Percussion settings. Vox and Farfisa Presets will not store the Vibrato settings, these are however stored in the program.

When Drawbar is active, the LED will be lit only if the physical position of the drawbars on the panel matches the settings in the program. If both the Preset and Drawbar LEDs are off, this indicates that the drawbars are active but the position on the panel does not match the settings stored in the program. As soon as you move a drawbar on the panel, the sound will change to reflect that drawbar's position.

Hold Shift and press the Preset/Lo button to save the current drawbar setting on the panel as the Preset. This preset then has to be stored in the program as well. Edit the settings of the Preset by holding the Preset button while adjusting the drawbars.

Press the Shift and the Split button to divide the Nord Electro 4D keyboard in two sections, the Lower and the Upper Manual sections. By default, the split point on the keyboard is between the keys B3 and C4. You can, however, also set the split point manually by holding both the Shift and Split buttons, the split LED starts to flash, then while still holding the buttons, press the desired key. A set split point is saved as part of the parameters in a program.

## Additional MIDI keyboard

You can connect an additional MIDI keyboard to the Electro 4D to use the organ in a dual manual fashion, with the external keyboard operating as the lower manual.

- 1 Connect the external MIDI keyboard's MIDI out to the Electro 4D's MIDI in.
- 2 Set the MIDI channel of the external keyboard to the channel that is set in the MIDI menu, the Lower Channel setting.

The default Lower MIDI channel in the Electro 4D is "2".

- 3 Select the #7 MIDI Split option in the MIDI Menu and set this to On.

Read more on how to change settings in the MIDI Menu on page 18.

- 4 Press and hold Shift and the Split button.

This will activate the organ split mode, but since MIDI Split is set to On, the Electro 4D's keyboard will only play the upper part without being split.

Adjust the drawbars for the lower, external keyboard when the Preset/Lo LED is lit and for the Electro 4D's keyboard when the Drawbar/Up LED is lit.

## The drawbars

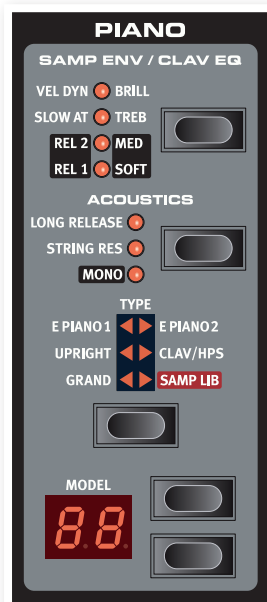
The drawbars of Nord Electro 4D behave just like to their mechanical counterparts. With the B3 and VX models you pull out and push in the drawbars to make the settings. The Farf model uses the drawbars as on/off switches.

## Piano section

The pianos in the Nord Electro 4D are divided into six different types; each type can contain several instrument models. You can freely add new piano instruments and samples via USB using the Nord Sound Manager utility (see "Nord Sound Manager" on page 20).

Right out of the box, Nord Electro 4D features a fine collection of carefully selected acoustic and electromechanical pianos, harpsichords and sampled instruments. A lot of effort was put in to ensure that the response and sound of the sampled instruments matches every nuance of the real article. Each piano instrument has been multi sampled in a vast amount of velocity levels. That's one reason why they all sound and feel so authentic.

The Piano section also includes the ability to use samples from the Nord Sample Library, like the Mellotron or Chamberlin sounds that have been licensed by Clavia.



## Clavinet sound

On an original Clavinet D6 you can select different pick-up and filter combinations by pressing a number of rocker switches. This functionality is very faithfully simulated in the Nord Electro 4D, which means that you get all the possible original Clavinet D6 sound variations (plus an additional four) by selecting different pick-up and filter combinations. Here's how it works:

### Pick-up type

A Clavinet D6 has two separate pick-ups, one on the "neck" and one on the "bridge". By selecting either one pick-up or both in different combinations you can alter the character of the sound quite drastically. When the Clavinet is selected in the Nord Electro 4D, you use the Model button in the Piano Select section to select one of the four pick-up variations:

### Pick-up Type Description

**Clav Model 1 (CA)** Only the "neck" pick-up; a warmer, less bright sound.

**Clav Model 2 (CB)** Only the "bridge" pick-up; a bright sound.

**Clav Model 3 (DA)** Both pick-ups on and in phase; a very full sound.

**Clav Model 4 (DB)** Both pick-ups 180 degrees out of phase; the fundamental is almost cancelled out and the sound becomes thin.

## Clav EQ

The Clav EQ button works as filter selectors. By selecting different combinations of the Brilliant/Treble and Medium/Soft filter indicators you can reproduce all 15 possible filter variations, exactly like on the original D6. Use the Shift button together with the Clav EQ button to access the Med and Soft settings.

## Acoustics

Activating the Long Release feature will add a slightly longer release to an acoustic or electric piano. This is equivalent to what happens when you adjust the damper tension in an acoustic or an electromechanical instrument.

- ❗ If a piano is selected that isn't compatible with the Long Release feature this feature will be disabled. Only pianos of version 5.2 or later are Release compatible.

Turn String Resonance on when you want to include the pedal-down samples in an acoustic piano sound. These samples will then be used when you play and activate the sustain pedal, with a very rich sound.

- ❗ The Sml-sized pianos do not include the string resonance samples.

Hold Shift and press the Acoustics button to playback a selected stereo piano in mono.

## Samp Env

When the Samp Lib type is active, the Samp Env LEDs and button can be used to set a desired velocity response and attack and release time behavior that affects the playback of the samples.

When none of the Attack LEDs are lit, the sample playback is not affected by any additional attack from the Electro 4D and it does not respond to keyboard velocity.

**Slow At** – select this when you want to play the samples with a slower attack.

**Vel Dyn** - select this when you want to control the volume and the timbre of the samples with velocity from the keyboard.

When both LEDs are lit, both the slow attack and the velocity option are active.

Press and hold the Shift button and operate the Samp Env button to set the desired release times.

When none of the Release LEDs are lit, the sample playback is not affected by any additional release.

**Rel 1**: Short release

**Rel 2**: Medium release

**Rel 1&2**: Long release

## Piano Type

Use the Type selector to choose which piano sound you want to use.

Each type may consist of several models; press repeatedly on the model selector to cycle through the models within a selected type.

Category	Description
Grand	Acoustic and electric grand pianos
Upright	Upright pianos
E Piano 1	Electric pianos with tines
E Piano 2	Electric pianos with reeds
Clav/Hps	Clavinets and Harpsichords
Samp Lib	Samples

## Model

Press repeatedly on the model selector to cycle through the available models within a selected type.

- ❗ *The type of a piano has been set by Mo' Bones, the company pitbull. You cannot move a piano from one type to another.*

## Program section

The Program section is where you select the program, where the Store functions are activated and where you enter the System, MIDI, B3 and Rotary menus. The 128 programs in the Electro 4D are organized in 32 pages with 4 programs in each page.



### Up/Down buttons

The Up/Down buttons to the left of the display have several functions in the Nord Electro 4D. Press repeatedly to select one of the 32 pages; the page and program number be presented in the display. Press Shift together with Up/Down to scroll through every location (1.1, 1.2, 1.3 etc).

If you have activated any of the four menus, the System, MIDI, B3 or Rotary menus, these buttons are used to select a function, and together with the Shift button to change the value of a selected function. Read more about the menus on page 17.

### Display

The LED display will show the active program number. If you edit a program, a dot will appear next to the program number, at the bottom right of the display.

If you have activated any of the menus, the setting for each menu item is shown with the LEDs.

### Store

The red Store button is used when storing Programs.

- 1 Press the Store button once and the current program number will start to flash.
- 2 Select the desired location with the Up/Down buttons and press Store again to confirm your intentions and to store the current settings to the selected location.
- 3 Press any button to abort the store procedure.

- ❗ *In order to be able to store settings the Memory Protection must be turned off. Read more about this in "Memory Protection" on page 9.*

### Live Mode

In addition to the program memories, there are 4 Live locations in the Electro 4D that automatically saves the changes you make to the settings. The 4 Program Buttons are used to access the Live locations when the Live LED is lit.

If you press the Live button, all changes to panel settings you make will be continuously saved in the "Live Buffer". If you switch the power off, or select another program, the settings are still stored in the Live memory, so when you power up next time (or return to the Live memory) all settings will be exactly as you left them.

If the Live memory is selected and you decide you wish to store the settings permanently as a program you can do so using the standard methods (see above). You can also store programs into the Live memory location, in which case the program settings will replace the current Live memory settings.

## Instrument selectors

Press one of the Instrument Selectors to use either the organ or the piano/sample sounds.

*Only the active section will have its corresponding functions lit and active. It is however possible to e.g. perform with the pianos, and adjust the organ settings, and then quickly activate these by pressing the organ instrument selector.*

## Shift

Many buttons have a second function, when there is text printed below the button. You access these additional functions and parameters by holding Shift while pressing a button.

## Octave Shift

The two Octave Shift buttons can be used to transpose the keyboard two octaves up or down (if the selected instrument supports this). Two Octave Shift LEDs that are lit at the right or left position indicates +/- 2 octaves shift.

Each instrument in Nord Electro 4D has a finite note range:

- The Organ extends one octave below and one octave above an 88 note keyboard range.
- The Piano and Samples extends one octave below an 88 key range, but not above.

## Effects



The Effects section of Nord Electro 4D can be used for processing the organ and piano/sample sounds. It is programmable and you can configure your effects separately for each program.

*You have the possibility in every program, to store the on or off setting of the effects, also for the instrument not being used as the active in the program. This allows you to quickly change from for example a piano performance with some effects turned on, to an organ performance with another set of effects turned on, by just pressing the appropriate instrument selector.*

*Press and hold Shift and press the Effect selector to cycle through the effects in a counter clockwise fashion.*

## EQ

This is a 3-band EQ with treble, bass and a sweepable midrange. The frequency ranges can be boosted/attenuated with +/- 15 dB.

## Effect 1

Effect 1 offers four different types of effects: **Tremolo**, **Auto-Panning**, 2 types of **Wah-Wah** and a ring modulator (**RM**).

The tremolo and the auto-panning have 3 selectable depths. Pan1 is less dramatic than Pan2, and Pan 3 (both Pan LEDs lit) is the most dramatic.

The Rate knob control the rate of the effect.

The **A-Wa** is a wah-effect where a lowpass filter sweep across the frequency range is controlled by the volume of the signal. This means that you can use the velocity on the keyboard to control the amount of "Quack!" in the sound. The Rate knob sets the frequency range of the sweep.

The **P-Wa** uses the Rate knob to control a lowpass filter sweep across the frequency range. If a control pedal is connected, this sweep is instead controlled by the pedal action, and the Rate knob will then have no effect.

**Ring Modulation (RM)** is an effect that multiplies two signals with each other. In the Electro 4D, these are the instrument audio signal and a modulation sine wave. The results can be range from a subtle coloring to screaming, inharmonic, bell type sounds. The Rate knob controls the frequency of the sine wave, also perceived as a "modulation rate".

A connected control pedal will control the amount of the ring modulation. If no control pedal is connected, the amount defaults a medium setting and the Rate knob can be used to produce a manually controlled ring modulation effect.

## Effect 2

Effect 2 offers three types of modulation effects: **Phaser**, **Flanger** and **Chorus**.

Each of these effects has 3 selectable depths in the same fashion as the tremolo and pan in the Effects 1 section. The Rate knob control the rate of the effect.

## Speaker/Comp

This section contains the speaker/amp emulations, the rotary speaker emulation and a compressor.

**Small**, **JC** and **Twin** emulates three different kinds of amplifier and speaker cabinets. The amount of drive is controlled by the Speaker/Comp knob .

**Rotary** simulates a rotary speaker including its built-in amplifier. The knob sets the amount of overdrive of the rotary amplifier; the speed of the rotating speaker is set with the rotary speed controls on the left side of the panel.

**Comp** is a compressor that will even out the dynamics of what you play, making low level sounds louder and high level sounds lower in volume. This produces a tight, punchy sound and makes the overall level easier to control in a live mix situation. When this effect is active, the Drive/Comp knob controls the amount of compression applied.

## Reverb

The Reverb section simulates the natural sound reflections in various acoustic environments. You can choose between five reverb types with various lengths and densities, indicated by the three LEDs that light up one or two at a time. The Dry/Wet knob sets the balance between the unprocessed and the processed signal.

## Delay / Reverb

The Delay effect produces echo effects. The Delay time is set with the Up/Down buttons (20 – 750 ms) while you hold the Tempo Tap/Set button.

The Dry/Wet knob adjusts the balance between the dry signal and the delay repeats.

## Feedback

Press the Delay/Reverb button repeatedly to set the feedback, the number of delay repeats. There are 5 feedback settings, indicated by the Dly 1-3 array of LEDs



## Ping Pong

Holding Shift and press the Tempo Tap button to light up the Ping Pong indicator, will make the delay repeats alternate between the left and right channels. If short delay times are used, these repeats will be “asymmetrical” and produce delays that are more like early reflections in reverb units.

## Tempo Tap

You can use Tap Tempo to set a delay time matching the tempo of a song. Simply tap the Tap Tempo button in the tempo you wish the delay to sync to a number of times, and the delay time will be adjusted automatically. As long as the Tap Tempo LED is lit, the tempo is calculated - wait until it goes dark to tap in another tempo. A numerical indication of the delay time will be briefly shown in the LED.

## Gain

This is the programmable Gain control which allows you to adjust the output level of each of the individual programs.

# 6 The Menus

Any settings that you change in the System, MIDI, B3 or Rotary menu will take immediate effect on a global basis, and will be stored until you change them the next time. Enter the menus by pressing and holding Shift and the System, MIDI, B3 or Rotary button (Prog 1, Prog 2, Prog 3 or Prog 4). Select a function with the Up/Down buttons and change the setting by pressing and holding Shift and the Up or Down button. Exit the menu by pressing a second time on the Prog 1, 2, 3 or 4 button.

❗ *The only exception to this is the MIDI Local On/Off setting which always reverts to Local On every time the Electro 4D is powered on.*

## System Menu

### 1 - Memory Protect – On, Off

This is set to “On” when the Nord Electro 4D leaves the factory, meaning that you cannot store any changes to the programs. Set this to Off when you wish to store your own programs. The System, MIDI, B3 or Rotary menu settings and the Live memory are not protected by this setting.

*Range: On (default), off*

### 2 - Output Routing

If you want to process your sound using external effects or separate amplifier systems, it can be convenient to route organ and piano sounds to separate outputs of the Nord Electro 4D.

*Range: St - Stereo Output. All instruments use the left and right outputs (default setting).*

*Sb - Split Output. Tonewheel organ is routed to the left output. Vx and Farf organs and pianos/samples are routed to right output.*

*SO - Separated Output. All organs are routed to left output, pianos/samples are routed to the right output.*

### 3 - Transpose

Transpose allows you to globally transpose the pitch of the Electro 4D up or down in semitone steps.

*Range: +/- 6 semitones (default = 0).*

### 4 - Fine Tune

This allows you to fine tune the pitch of the Nord Electro 4D.

*Range: +/- 50 cent (default = 0).*

### 5 - Sustain Pedal Polarity

This allows you to change the polarity of a connected sustain pedal, in case the functionality of your pedal is reversed (i.e. when the pedal is up, sustain is on and vice versa).

*Range: CL - Close (default), OP - Open.*

### 6 - Rotor Pedal Polarity

This allows you to change the polarity of a sustain type pedal connected to control Rotor Speed, in case the functionality of your pedal is reversed (i.e. when the pedal is up, Rotor Speed is fast and vice versa).

*Range: CL - Close (default), OP - Open.*

### 7 - Sustain Pedal Mode

If you're using a single sustain pedal connected to the Sustain Pedal input you may want to use it for sustain with piano sounds and as a Rotor Speed switch with organ sounds. In this case, select “rt” (rotor toggle) with the Up/Down buttons.

If you're using two separate sustain pedals: one in the Sustain Pedal Input and one in the Rotor Speed Input you probably want to use the sustain pedal in the Sustain Pedal input for sustain also when using Organ sounds. In this case, select ‘SU’ (sustain).

*Range: SU (default), rt.*

### 8 - Rotor Pedal Mode

If you are using a sustain pedal connected to control Rotor Speed this allows you to set how this should operate. “Hold” means that the Rotor Speed is fast for as long as the pedal is down and reverts back to slow when the pedal is released (or vice versa depending on the set pedal polarity).

“Toggle” means that the fast/slow rotor speed is switched each time you activate the pedal, like an on/off switch pedal.

*Range: Hd - Hold, (default), tO - Toggle.*

### 9 - Ctrl Pedal Type

The Electro 4D accepts many of the most commonly available control pedals the Ctrl Pedal input. Select a setting here that matches the pedal that you use.

⚙️ *If you operate a connected pedal while this option is active, a percentage will be displayed from 0 to 100 to indicate the range of the connected pedal. This can be used to find a suitable setting for a pedal this isn't directly supported.*

*Range: r5 - Roland EV-5, (default), r7 - Roland EV-7, y7 - Yamaha FC-7, ko - Korg (EXP-2 & XVP-10), Ft - Fatar (& Studiologic VP/25)*

## 10 - Ctrl Pedal Mode

A connected control pedal can be used to control several things. It can be used as a solitary organ swell pedal (swell is a combination of volume and frequency control), as a combined organ swell/volume pedal for the samples, and finally as a swell/volume pedal for all the instrument sections (incl. the pianos) in the Nord Electro 4D.

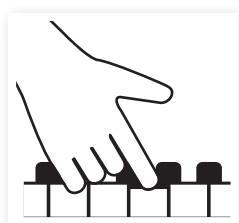
Range: O – Organ swell (default), S – Organ swell/sample volume, P – Organ swell/sample volume, piano volume

- ❗ A connected control pedal will always be active if the P-Wa or the RM effect is activated, regardless of the Ctrl Pedal Mode setting.

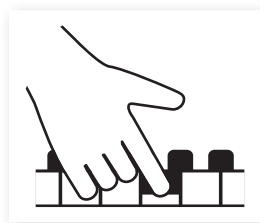
## 11 - Organ Trig Mode

This allows you to change how the Nord Electro 4D keyboard triggers the organ sounds. When “Fast/High” is selected, you will trigger the organ sounds before the key reaches the end of its travel. This mode closely mimics the way a vintage tonewheel organ trigger its notes.

Range: HH - High (default), LO - Low



High trigger point



Low trigger point

## MIDI Menu

### 1 - Local Control

This allows you to set if the Nord Electro 4D keyboard and front panel controls should control internal Programs or only send note and controller messages via MIDI. Local On is the normal “mode”. In Local Off mode, the front panel and keyboard action are transmitted via MIDI only and does not control the internal sound(s) directly.

Range: On (default), Off

- ❗ Local defaults back to mode On every time the Nord Electro 4D is powered on.

### 2 - MIDI Interface

Use this setting to choose if you want to use the MIDI interface on the DIN connectors or the USB-MIDI functionality.

Range: P - DIN MIDI ports, U - USB-MIDI (default)

### 3 - MIDI Channel

This sets the MIDI Channel that the Nord Electro 4D transmits and responds to.

Range: 1-16, OF - off (default = 1)

### 4 - Lower Channel

This sets the MIDI channel that the Lower Manual of the Nord Electro 4D organ section responds to when the organ split and the MIDI split modes are active.

Range: 1-16, OF - off (default = 2)

### 5 - Control Change (CC) Mode

This setting specifies how the front panel's knobs and buttons are handled in the MIDI communication with MIDI Control Change messages. You can select if the panel controls and functions should either send or receive, or both or if Control Change messages should be ignored.

Range: Sr (send & receive - default), r (receive only), S (send only), Off

### 6 - Program Change Mode

Specifies how the Nord Electro 4D should handle MIDI Program Change messages.

Range: Sr (send & receive - default), r (receive only), S (send only), Off

### 7 - MIDI Split Mode

If MIDI Split mode is On and the Organ is set to a split operation, the lower manual will be exclusively controlled via incoming MIDI information to the Electro 4D's MIDI input. If you connect an external MIDI keyboard, the Electro 4D can then be used in a dual manual fashion.

Range: On, Off (default)

### 8 - Dump One

This allows you to perform a MIDI SysEx dump of the currently selected Program. Press the Store button to perform the dump.

### 9 - Dump All

This allows you to perform a MIDI SysEx dump of all the Programs in the Electro 4D. Press the Store button to perform the dump.

In the MIDI chapter, on page 32 is a description on how the Electro 4D receives a Sys Ex dump.

### 10 - Send CC

You can perform a dump of all the active Program's parameters as MIDI Control Change messages. Press the Store button to perform the dump.

## B3 Menu

### 1 - Tonewheel Mode

Sets the level of tonewheel crosstalk and cable leakage artifacts of the B3 organ model.

- ❗ *The Vintage 3 mode will create noises from the B3 model even if you don't play any keys.*

Range: u3 - Vintage 3, u2 - Vintage2, u1 - Vintage1, Cl - Clean

### 2 - Key Click Level

This sets the amount of Key Click for B3 organ model.

Range: H2 - Higher, H1 - High, nO - Normal (default), LO - Low

### 3 - Key Bounce

This turns on or off the Key Bounce feature. When this is on, the key off click can be accentuated if the key is released quickly.

Range: On (default), Off

### 4 - Perc. Fast Decay

Sets the fast mode decay time of the Tonewheel percussion effect.

Range: Ln - Long, nO - Normal (default), SH - Short

### 5 - Perc. Slow Decay

Sets the slow mode decay time of the Tonewheel percussion effect.

Range: Ln - Long, nO - Normal (default), SH - Short

### 6 - Perc. Norm Level

Sets the level of the percussion effect in its normal setting.

Range: H1 - High, nO - Normal (default), LO - Low

### 7 - Perc. Soft Level

Sets the level of the percussion effect in its soft setting.

Range: H1 - High, nO - Normal (default), LO - Low

### 8 - Perc Drawbar 9 Cancel

If this is set to cancel, the 9th drawbar will be muted when the percussion is activated, to mimic the behavior of an original organ.

Range: C - Cancel, nO - Normal (default).

## Rotary Menu

### 1- Rotary Model

There is one rotary model available, with two separate microphone positions. The 122 is modeled with the microphones placed traditionally a bit away from the speaker. The 122 Close have the microphones placed closer to the cabinet.

Range: nO - 122 (default), CL - 122 Close

### 2 - Balance Bass/Horn

This parameter allows you to adjust the balance between the two separate microphone setups for the bass rotor and treble horn.

Range: H2 - 30 bass/70 horn, H1 - 40/60, nO - 50/50 (default), b1 - 60 bass/40 horn, b2 - 70/30

### 3 - Treble Horn Speed

Sets the speed setting (in the fast and slow speed modes) of the rotary speaker simulation's treble horn.

Range: H1 - High, nO - Normal (default), LO - Low

### 4 - Bass Rotor Speed

Sets the speed setting (in the fast and slow speed modes) of the rotary speaker simulation's bass rotor.

Range: H1 - High, nO - Normal (default), LO - Low

### 5 - Treble Horn Acceleration

Sets the acceleration and retardation time of the rotary speaker simulation's treble horn.

Range: H1 - High, nO - Normal (default), LO - Low

### 6 - Bass Rotor Acceleration

Sets the acceleration and retardation time of the rotary speaker simulation's bass rotor.

Range: H1 - High, nO - Normal (default), LO - Low

# 7 Nord Sound Manager

The Nord Sound Manager is the application that allows you to organize the various memory areas, the partitions in the Nord Electro 4D. It is also used to download pianos or programs to the Nord Electro 4D or to upload any of these items - called sounds - from the Nord Electro 4D memory to the computer hard drive. The Nord Sound Manager provides access to various methods to download the sounds to the unit and a function to backup and restore the entire Nord Electro 4D memory.

## System requirements

The Nord Sound Manager is compatible with computers running Mac OSX 10.4 or later, Windows XP, Windows 7 and Windows Vista. If you run the Nord Sound Manager on a Windows computer, you also need a Clavia USB Driver of version 3.0 or later installed.

- ❗ *Nord Electro 4D OS Updates, USB drivers and instructions on how to install these are available at the [www.nordkeyboards.com](http://www.nordkeyboards.com) website and on the DVD that accompanies this unit.*

## Installation

### USB Driver

- ❗ *Mac OSX users may skip this section.*

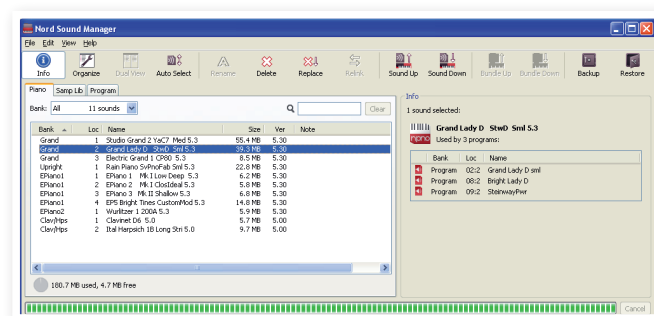
The USB driver can be installed automatically if the computer is connected to the internet when the Nord unit is connected to it. You can then allow Windows to search for the driver. Here is how to make a manual driver installation:

- 1 If you use a Windows computer (XP, Vista or W7), locate the Clavia USB Driver v3.x Setup on the DVD that accompanies the unit and double click on this file.
- 2 Follow the instructions on the screen.
- 3 After the files have been installed, the driver will be activated when you connect the Nord unit. Do this by connecting a USB cable between the Nord instrument and your computer.
- 4 When the Nord unit is connected to the computer, the driver will be automatically activated and a confirmation will appear in the notification area in the Windows task bar.

### Sound Manager

- 1 **Windows users:** Open the Nord Sound Manager folder on the DVD, launch the “Nord Sound Manager v6.x Setup” and follow the instructions. The Nord Sound Manager can be accessed from the start menu when the installation procedure is finished.
  - 2 **Mac OSX users:** Open the Nord Sound Manager folder on the DVD, double-click on the “Nord Sound Manager 6.x.dmg” and then drag the Nord Sound Manager application from the virtual hard drive to your “Applications” folder.
- ⚠ *The files mentioned for the driver and application installations can also be downloaded from the [www.nordkeyboards.com](http://www.nordkeyboards.com) website. Please visit our website from time to time to check for any Sound Manager updates.*

## Overview



You can manage the contents of the Piano, the Sample, the Program and the Synth partitions. These are accessed from the tabs.

*If no Nord Electro 4D is connected to the computer, pages, icons and memory locations will be grayed out.*

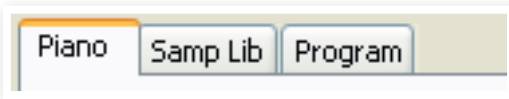
- ⚠ *The actions that take place in the Nord Sound Manager will affect the memory in the Nord Electro 4D. The Manager is on-line with a connected Nord Electro 4D at all times; any changes that you perform in the Manager will immediately be executed in the Nord Electro 4D. If you for example delete a piano or a Program from the list in the Nord Sound Manager, that same sound will also be deleted from the Nord Electro 4D's memory.*

## The Toolbar




The Toolbar gives you direct access to some of the more frequently used functions in the Nord Sound Manager. Clicking on an icon will activate one of these functions, and a dialogue will often appear asking for confirmation or further instructions from you.

## The Tabs



Select the partition that you wish to work in with the Tabs. The Piano tab allows you to change the content of the piano partition, the Samp Lib tab allows you to access the sample partition and the Program tab allows you to organize the programs. The individual pianos, samples or programs will be referred to as “sounds” in this manual and in the application itself.

 Press **Ctrl+Tab** on the computer keyboard to cycle between the tabs.

The lists can be ordered according to location, name, size, version and date, in ascending and descending order. Just click on a headline to select a preferred view.

## Partition Memory Indicator



The memory indicator at the bottom of the window indicates how much memory is being used in the selected partition. The dark area shows the used memory, the bright indicates space that is available for new sounds.

## Right-Clicking

If you right-click on a sound, a context menu will provide the following options:

### Select in Instrument

This will select the chosen sound in the Manager list, to be instantly accessible on the Nord Electro 4D.

### Upload

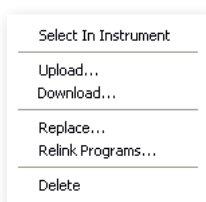
This will upload the selected sound from the Nord Electro 4D to the computer hard drive to a folder of your choice.

### Upload To Bundle (Programs)

This will upload the selected program(s) and any piano and/or sample that this program uses, to a Program Bundle file on the hard drive. Bundles are explained in greater detail on page 23.

### Download

This is only available if you right-click on an empty location that does not contain a sound. This allows you to choose a file on the hard drive, to be downloaded to the location in the Nord Electro 4D.



## Replace (Pianos & Samples)

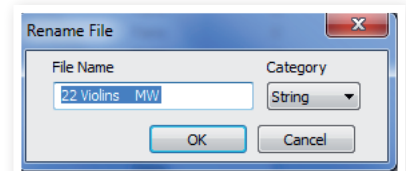
This feature makes it possible to replace a piano or a sample in the unit with another piano or sample from your hard drive. The process will update all the programs that used the former piano/sample, to use the new one after the replacement has been carried out.


## Relink (Programs)

Use the Relink feature if you want one or several selected programs to use another piano or sample instead of the current sound. The sound in question have to be present in the memory of the Nord unit. Relinking can also be used if a piano or sample is absent in the Nord unit, to repair the programs that are missing a component.

## Rename

This allows you to rename, and assign a category to a Program. Characters supported are: a-z, A-Z, 0-9 and a hyphen (-) and the name can contain up to 16 characters. Any other characters will not be displayed in the Sound Manager lists.



 *Pianos or samples cannot be renamed, this option will not be available if you right-click on any of these.*

## Delete

This will delete the selected sound(s) from the Nord Electro 4D memory.

## File Formats

The Nord Sound Manager creates and/or uses files with the Nord Electro 4D, with the following extensions:

- .npno - These are the piano files from the Nord Piano Library.
- .nsmp - These are the sample files from the Nord Sample Library.
- .ne4p - These are the Electro 4D Program files.
- .ne4pb - The Electro 4 Program Bundle files.
- .ne4db - This is the extension used for the Nord Electro 4D backup files.

Just as any other computer file on your hard drive, these files may be renamed, emailed, copied, moved, lost or even stored in a safe location if an evil computer crash suddenly decides to take your hard drive for ride.

## The Quick Tour

Let's get acquainted with some of the functions in the Nord Sound Manager.

### Transfer pianos to the Electro 4D

When the Nord Electro 4D leaves the factory, the Piano partition is filled with sounds. In order to be able to download additional pianos, you may have to delete some of the factory pianos. If you ever want to reload any deleted pianos, they are available on the DVD that was included with the Nord Electro 4D, or available as a download from the [www.nordkeyboards.com](http://www.nordkeyboards.com) web site, in the Libraries area.

### Deleting a piano

Bank	Loc	Name	Size
Grand	1	Grand Lady Alfa 1 L 4.6	76.8 MB
Grand	2	StudioGrand2 XLR YaC7 Clos 4.0	65.9 MB

- Connect the Nord Electro 4D to the computer and launch the Nord Sound Manager.
- The Piano tab will open and the current content of the piano partition in the Nord Electro 4D will be displayed.

Select a piano to delete and press the Delete icon in the toolbar.

You can also right-click on the sound and choose the Delete option or use the backspace or delete keys on the computer keyboard.

- You will be asked to confirm your intentions and then the piano in the Nord Electro 4D will be deleted.

### Download a new sound

Grand Lady L 5.0.npno	Upright	1	BlueSwede R LargeUpright 4.0
Black Upright L 5.0.npno	Black Upright	2	Black Upright L 5.0.npno
BlueSwede L 5.0.npno	Upright	3	
	Upright	4	

- Using drag and drop: Open the folder on the computer hard drive where the new sound is located.
- Make sure that the Sound Manager window and the folder are visible on the screen.
- Drag the new sound to the white area in the Sound Manager list. When the destination location will turn gray, release the mouse button.
- The Clean Deleted Space process will start to prepare the memory and then the new piano will be downloaded to the Nord Electro 4D. If there isn't enough free space, a message will appear in the lower left text area in the Nord Sound Manager.

*If the Organize option is active in the View menu, you can drop a sound on any free location in the bank. If this function is not active, the new sound will be automatically placed at the first free location in the bank. The various locations are selected using the Model selector on the Nord Electro 4D.*

*The pianos are categorized and can only be added to the correct bank; electric pianos can not be added to the grand bank, the grand's cannot be dropped in the clavinet bank etc.*

- Using the Toolbar or Menu command: Click on the Sound Down icon in the toolbar. The same command is also available in the File menu: Sound Download (Ctrl-D).

- Browse to the folder on the hard drive where the desired sound is located, select it and click Open. The sound will now be added to its bank.

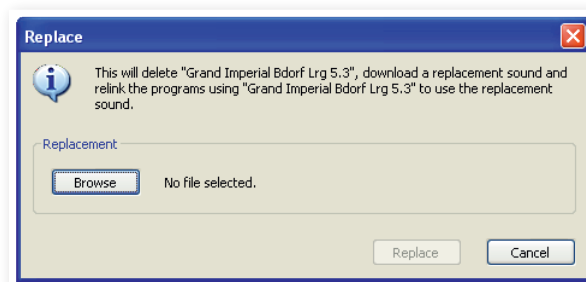
### Replace

You can also use the Replace functionality. This action replaces a piano in the Nord Electro 4D with one that you want use from the DVD or one that you have downloaded from the [www.nordkeyboards.com](http://www.nordkeyboards.com) website.

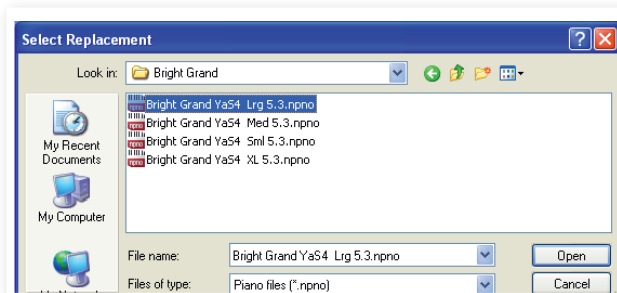
Replacing a piano with another will automatically update all the Programs that used the previous piano to use the new piano instead.

- Open the Piano tab. The current content of the piano partition in the Nord Electro 4D will be displayed.
- Select a piano in the list that you wish to replace with a new one and click the Replace icon in the toolbar.

*You can also right-click the sound and choose the Replace option or use the Replace command in the Edit Menu.*



The Replace dialog informs you about the action about to take place. Click Browse to locate a new sound on the computer hard drive. The Bright Grand is chosen in the image below.



- Press Open and then confirm by clicking Replace.

The replacing action will begin by deleting the original piano, then cleaning the memory, downloading the new piano and finally relinking all the programs to use the new one instead.

*If you use Replace to try a piano and then change your mind, just replace the new one with the previous one to get back to where you started from.*

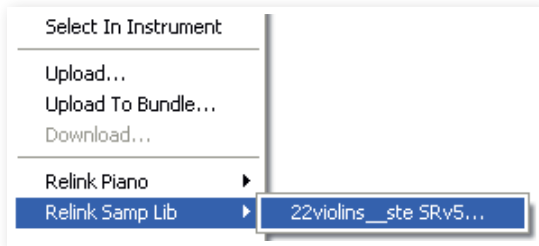
*The Replace action can be done with samples as well.*

## Relink

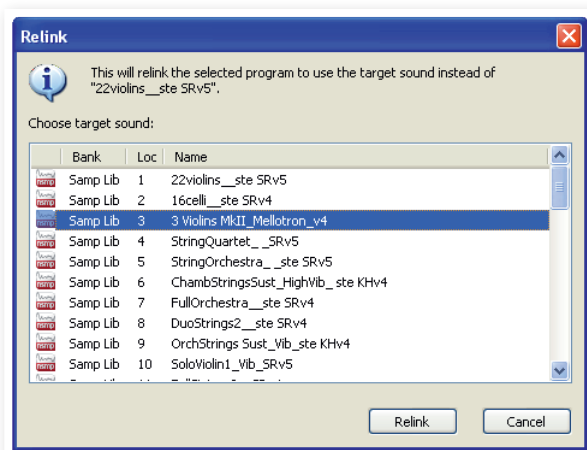
Relink is a powerful feature that makes it possible to change the piano or sample that one or several programs use. Let's imagine that you have downloaded a new favorite grand piano and want to change the programs that used your previous favorite grand, to the new one instead. Instead of manually changing every program on the unit, Relink can achieve this in the Manager.

Let's Relink a program, to change what sound(s) the program should use.

- 1 Open the Program tab and right-click a program in the list.
- 2 Select the Relink Samp Lib option in the context menu. The menu will expand to show the sample that is linked to this program.



- 3 Select the sample and let go of the mouse button. This will open the Relink dialog where you can choose the new sound that the program should use instead.



- 4 Click Relink to relink the program to the new sound.
- ❗ You can only Relink programs to a sound that is already present in the Nord Electro 4D.

## Download Queue

You can add several sounds, one by one, using the drop method, or with the Toolbar or Menu commands. These sounds will be put in the download queue. The memory will be cleaned if needed and the files will be downloaded to the unit in the order they were added.

- 1 Select the desired partition that holds the type of sounds that you wish to load.
- 2 Drag a sound from the computer hard drive to the white area in the Sound Manager list.
- 3 Drag another sound to the white area in the Sound Manager list.

1	EPiano 1	Mk I Low Deep 5.1	6.2 MB	Downloading... (17%)
2	EPiano 2	Mk I CloIdeal 5.1	5.9 MB	Queued
3	EPiano 3	Mk II Shallow 5.1	6.8 MB	Queued
4	EP5	Bright Tines CustomMod 5.1	14.8 MB	5.10
1	Wurlitzer	1 200A 5.0	5.9 MB	5.00
1	Clavinet	D6 5.0	5.7 MB	5.00
2	Ital Harpsich	1B Long Stri 5.0	9.7 MB	5.00

Files that are placed in the queue will be displayed in bold.

- 4 If you wish to cancel an ongoing queue, you can either delete all files that are queued or press the Cancel button. During the Clean process the Cancel option is not available.

Files waiting in the queue can be deleted from the queue if you change your mind. Right-click on the queued sound or use the Toolbar or Menu "Delete" command.

💡 Files already in the unit can be moved or deleted during the processing of the queue.

## Upload sounds from the Nord Electro 4D

- 1 Select the desired partition that holds the sounds that you wish to store on the computer hard drive.
- 2 Select the bank and the sound. Shift-click will allow you to select several consecutive sounds; Ctrl-click will allow you to select nonconsecutive sounds. Here we have selected a few of the programs:

Loc	Name	Category
1	The Grand	Grand
2	Eltons Piano	Grand
3	ZawiTines	EPiano
4	SparkleTop	EPiano
5	HardTines	EPiano

- 3 Click on the Sound Up tool or right-click on the selected sound(s) and select Upload. The dialogue will prompt you to browse to the desired destination folder on the hard drive. The upload process may take a few moments depending on the size of the sounds.

## Program Bundles

A Program Bundle contains one or several programs, and all the pianos and samples that these programs use, in one file. Bundles are great to store parts of the memory from your Nord Electro 4D. If you select one program and create a Bundle, the Bundle will be pretty small in size, and the uploading process will be reasonably quick, compared to a complete Backup procedure.

You can also create another Bundle with all the programs you need for a specific performance, and when you need those programs again, the Bundle functionality will restore them and their sound files to your Nord unit.

Not all Nord units are compatible with the Bundle feature. Look at the Sound Manager page on the Nord website for further details.

- ❗ Pianos and samples that are used by several programs will not be duplicated in a Bundle, nor will they be downloaded back to the instrument if they already are in place in the instrument.

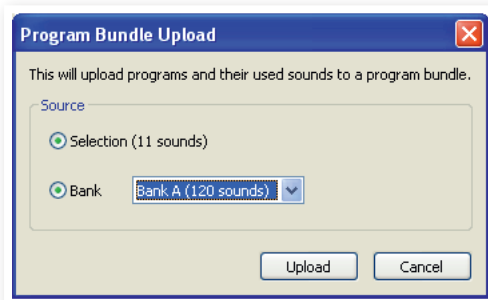
## Upload a Program Bundle

- 1 Open the Program Tab and select one, or several programs. Use Ctrl-click to make non-consecutive selections like this one:

Bank	Loc	Name
Bank A	01:1	Grand 1
Bank A	01:2	Grand 1 w EQ
Bank A	01:4	Abba-Grand
Bank A	01:5	PianamaSplit
Bank A	02:1	Grand 2
Bank A	02:2	Grand 2 w EQ
Bank A	02:3	LeftHand Orch
Bank A	02:4	Grand 2 w more
Bank A	02:5	GrandDx ep
Bank A	03:1	Grand 3

- 2 Click on the Bundle Up icon in the Toolbar.

The Program Bundle Upload dialog gives you two choices:



**Selection** will create a Program Bundle with the selection of programs you made in the Sound Manager program list and the pianos and/or samples that these programs use.

**Bank** makes a Bundle of an entire Bank that you select with the drop-down. This action will probably take a bit longer and the resulting Bundle will be a bigger file since there may be many more pianos and samples in this type of Bundle.

- 3 Choose the Selection option and click on Upload. In the following dialog, give the Bundle a meaningful name and find a location on the computer hard drive.

## Downloading a Bundle

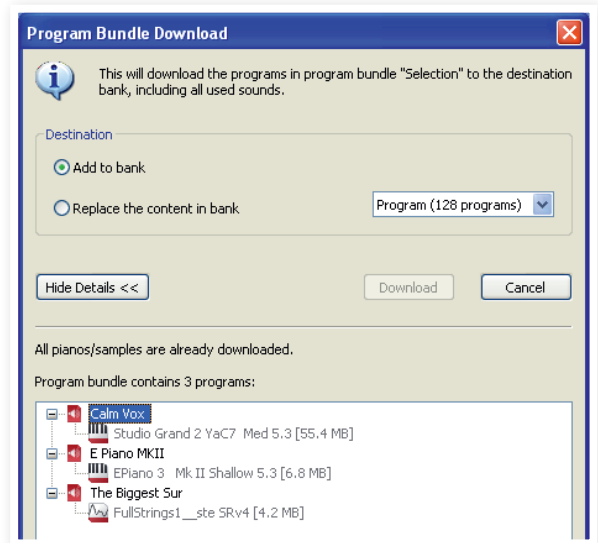
Here comes the really great part about Bundles. When you download a Bundle to the instrument, any pianos and samples that the programs in the Bundle depend on, are downloaded. They will be placed at the next available location in the piano and/or Samp Lib partition.

- *Pianos and samples are not duplicated if these files are already in the instrument. The Bundle programs will use the new or existing locations of the pianos and samples, when they are downloaded to the free locations in the program partition.*

- 1 Make sure the Program Tab is open.
- 2 Press the Bundle Down icon in the Toolbar. You can also use the Bundle Download command from the File menu (Ctrl+Shift+D).
- 3 Navigate to the Bundle file that you wish to download and click Open.

After the Manager has verified the files in the Bundle, the Program Bundle Download dialog will appear.

- Click on Show Details if you want to see what programs, pianos and samples are in the Bundle.



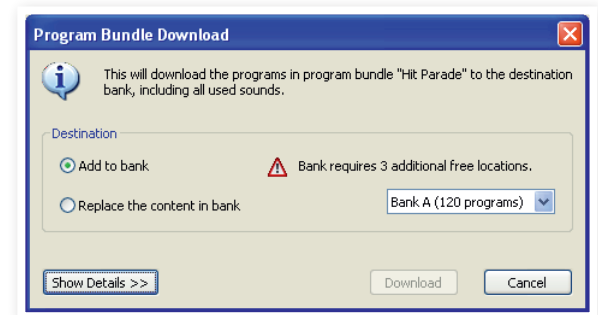
There are two options when you download a Bundle.

**Add to bank** will download the program files and add them to the program bank that you choose in the drop-down menu. The programs will be placed at the first available locations.

- *If the programs in the Bundle will not fit in the Bank, the process will not be performed and you will see a dialog. Delete or move some programs from that Bank and try again.*

**Replace contents in a bank** will simply delete all programs in the Bank you choose and download the programs in the Bundle to this bank instead. The programs will be placed at the same locations as they had when the bundle was created.

If a bundle will not fit in a bank, this will be presented in the dialog like in this example where more free locations are needed in the program bank:



## Organize the program partition

By using drag and drop, you can organize the content of the Program partition with its 128 programs.

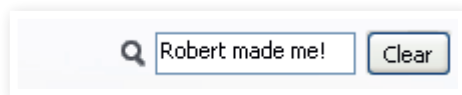
- ① Make sure that Organize is turned on in the View menu.
- ② Select and drag a program from the destination location to the desired location.

If you drop a sound on a free location, the sound will be moved from the source location. If you drop on a location that is occupied, the two sounds will trade places.

- ③ Select a program and press the Ctrl-key on the computer keyboard. If you now drag this selection, the Program will be copied and pasted at the destination instead of just being moved.

## Search Box

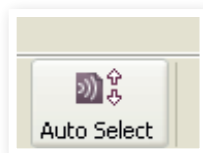
- ① By entering one or several characters in the Search Box, you can filter out the content that is presented in the lists.



This provides you with a quick way to find duplicate programs, etc..

## Auto Select

By clicking on the Auto Select icon in the toolbar, you toggle the Auto Select function on or off.



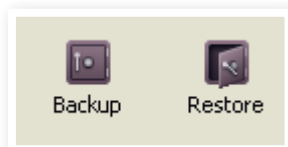
When Auto Select is turned on and you scroll through the Pianos or Program lists using the computer keyboard arrow keys, the sounds will automatically be selected in the Nord Electro 4D.

- ☼ *Double-clicking on a piano, sample or program in the Manager list will also select it in the Nord Electro 4D.*

## Backup

- ① Click on the Backup icon to make a backup file that contains all the content in your Nord Electro 4D.

The Nord instruments are built to the highest standards of reliability but doing regular backups is always a good thing.



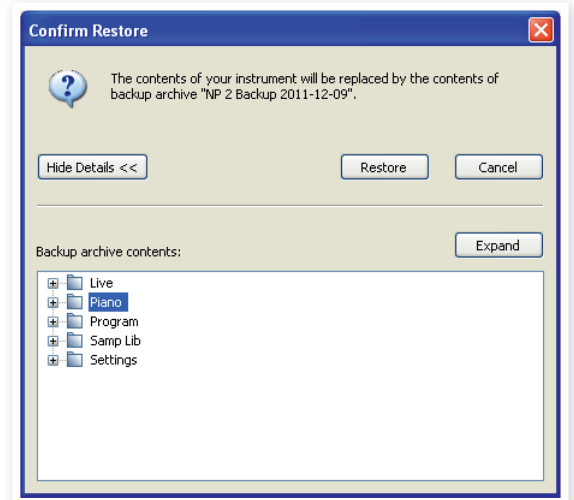
- ② Give the backup file a meaningful name and find a suitable location on your hard drive.

- ☼ *If you choose a backup file that already exists, only the changes that have occurred in the instrument will be added to that previous file.*

## Restore

When you want to restore the entire content of the Nord Electro 4D, click on the Restore icon in the Toolbar and select a backup file that you have made. You can also drag the backup file from the computer and drop it to the Manager window.

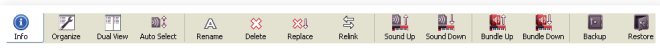
The Confirm Restore dialog will appear that requires your confirmation. You can look at the content of the file if you click on "Show Details".



There is a Factory Backup file on the Nord DVD that was delivered in the box with the instrument, that can be used to restore the unit to the content it was shipped with. This file can also be downloaded from the [www.nordkeyboards.com](http://www.nordkeyboards.com) website.

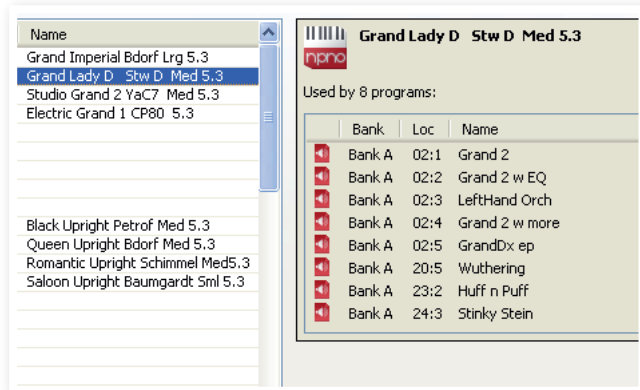
## Sound Manager reference

### Toolbar

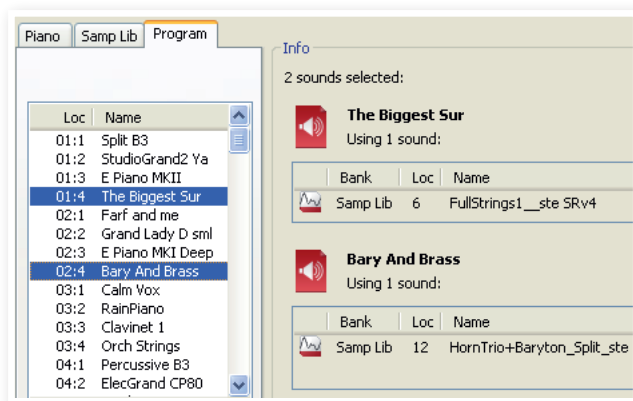


### Info

Activating Info brings up an information area to the right of the list.



The Info area will show if a selected piano or a sample is used in any Programs, or what pianos and samples are used in any selected Programs. This provides you with an excellent way of keeping track of how the content components in the Nord Electro 4D depends on each other.



Let's say you need to delete some of the factory samples to make room for new samples. By selecting a sample in the Samp Lib partition and activating Info, you can see which of the programs that would be affected by such a deletion (or replacement).

### Organize

When this option is active, the lists will show all the available locations in the selected partition/bank and not only the occupied ones. This will for instance make it possible to drag a file to a specific free location in the middle of the list. If this is inactive, only the occupied locations will be shown and re-arranging the order is not possible.

### Dual View

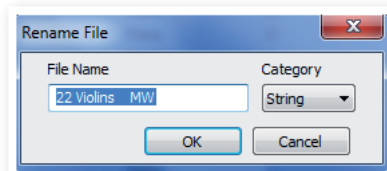
When this option is checked, the window (if set to display the Program partition) will be divided in two lists. You can make the lists show separate banks with the drop-downs. Rearranging programs is simply a matter of drag and drop. Drag a program from one bank/list to another bank/list in either direction.

### Auto Select

With this function active, scrolling through the piano or program list with the computer keyboard arrow keys will automatically select the sound in the Nord Electro 4D.

### Rename

This allows you to rename a Program and assign a Category to it. 16 characters can be used, and the supported characters are: a-z, AZ, 0-9 and the hyphen (-). Any other characters will not be displayed in the Sound Manager lists.



**i** Pianos or samples cannot be renamed so this function is not available if you have selected any of these.

### Delete

Allows you to delete one or several selected sounds. You will be asked to confirm your intentions. You may also use the delete or backspace key on the computer keyboard to perform this action.

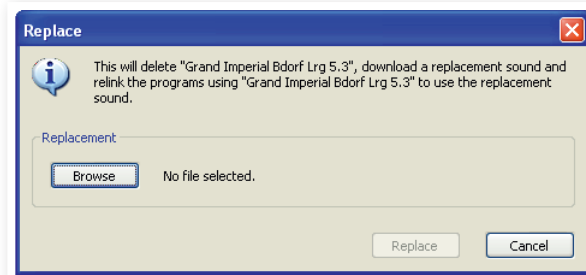
**i** Any Program in the Nord Electro 4D that used a particular piano or sample that you deleted will not sound at all, since it will be missing an important component.

The space that a deleted piano occupied is not immediately available to other sounds, even though it is gone from the list and its location is free. The Flash memory needs to be cleaned to free up the space where the deleted sounds have been. When you add a new piano the cleaning process will be initiated automatically. You also have the option to manually start the cleaning process with the Clean Deleted Space command from the File menu.

### Replace

This allows you to replace a selected piano or a sample with another piano or sample that you have on the computer hard drive.

This function is not only about replacing the sound file in the memory, all the programs that used the old sound, will be updated, relinked to use the new sound instead.



### Relink

Use the Relink feature if you want one or several selected programs to use another piano or sample instead of the current sound. The sound in question have to be present in the memory of the Nord unit. Relinking can also be used if a piano or sample is absent in the Nord unit, to repair the programs that are missing a component.

**i** Not all Nord units are compatible with the Replace and Relink features, in which case these icons will be grayed out.

- ❗ *Flashing LEDs in the Piano Type and Model section indicates that the piano that the current Program tried to use is not available in the Flash memory. Select another program or download the missing piano to the Nord Electro 4D.*

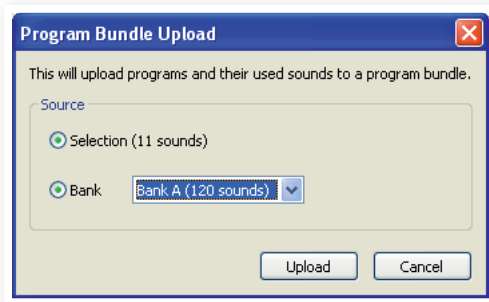
### Sound Up

Use this function to upload one or several sounds from the Nord Electro 4D to the computer hard drive.

### Sound Down

Use this function to download one or several sounds from the computer hard drive to the next available location in the selected partition.

### Bundle Up



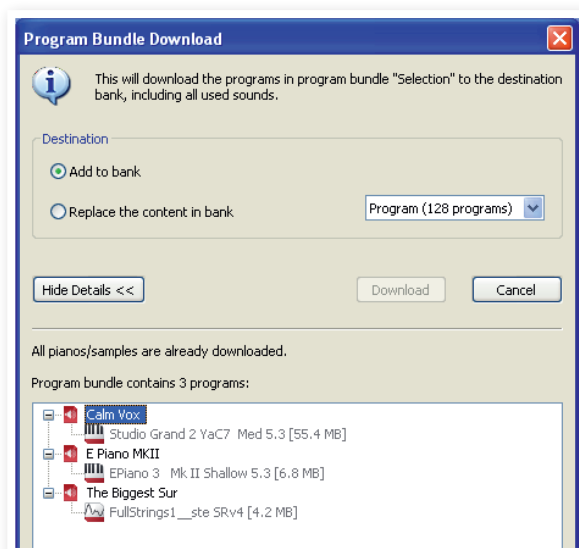
This function will upload a selection of programs or an entire Bank to the computer hard drive, and include all the pianos and/or samples that these programs use in a Program Bundle file.

The default source will be the currently selected Program(s) or the active bank, but you can choose another bank with the drop down menu.

Click on the Upload button to enter the name of the Bundle and to select the destination on the hard drive. The Program Bundle file that is created on the hard drive will have a file extension that ends with "pb".

### Bundle Down

This function will download a Bundle with programs, pianos and samples from the computer hard drive to the Nord Electro 4D. You have a choice if you want the Bundle to be appended to the existing programs in the bank in focus or if the Bundle should replace the contents in an entire bank of your choice.



Programs in a Program Bundle will be downloaded to the locations where they came from if the Replace option is selected.

### Backup

This will make a backup of all the pianos, programs, Live programs and the menu settings in the Nord Electro 4D. The file that is created on the hard drive will have the extension .ne4db. Backing up the entire memory content in this manner will take some time, depending on the sizes of the pianos and samples in the unit.

- 💡 *Backing up from the Nord Sound Manager is done in an incremental manner. Unless you change the name or the location of the backup file, only the pianos and/or programs that have been changed since the previous backup will be saved.*

The Nord Sound Manager will suggest a location for the backup, the first time this function is selected (in My Documents/Nord Sound Manager files/). If you rather save the backup file elsewhere, use the browser to pick another destination.

### Restore

To restore a previously saved backup file to the Nord Electro 4D, select this option and browse to a backup file on the hard drive (file extension .ne4db) and click Open.

- ⚠ *The restore function will begin after you have clicked Open and confirmed your intentions in the dialogue. All the content of a connected Nord Electro 4D will then be irrevocably replaced by the content of the backup file.*

## Menus

In the Nord Sound Manager, the usual Windows and Mac OSX keyboard commands can be used. The menus can be accessed by pressing the Alt key and the underlined letter in the menu bar.

Most of the commands can also be accessed by pressing the Ctrl (on the Mac - Command) key together with the letter shown next to the command name in the menus.

### File Menu

#### Sound Upload (Ctrl+U)

Use this function to upload one or several sounds from the Nord Electro 4D memory to a folder on the computer hard drive.

#### Sound Download (Ctrl+D)

Use this function to download one or several sounds from the computer hard drive to the next available location in the selected partition.

#### Program Bundle Upload (Ctrl+Shift+U)

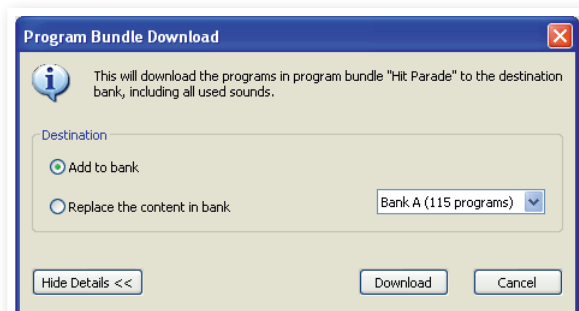
This function will upload a selection of programs or an entire Bank to the computer hard drive, and include all the pianos and/or samples that these programs use in a Program Bundle file.

The default source will be the currently selected program(s) or the active bank, but you can choose another bank with the drop down menu.

Click on the Upload button to enter the name of the Bundle and to select the destination on the hard drive. The Program Bundle file that is created on the hard drive will have a file extension that ends with "pb".

#### Program Bundle Download (Ctrl+Shift+D)

This function will download a Bundle with programs, pianos and samples from the computer hard drive to the Nord unit. You have a choice if you want the Bundle to be added to the existing programs in the bank in focus or if the Bundle should replace the contents in an entire bank of your choice.



#### Backup (Ctrl+B)

This will make a backup of all the pianos, samples, programs, the Live programs and the menu settings in the Nord Electro 4D.

The file that is created on the hard drive will have the extension .ne4db.

Backing up the entire memory content in this manner will take some

time, depending on the sizes of the pianos and samples in the unit.

*Backing up from the Nord Sound Manager is done in an incremental manner. Unless you change the name or the location of the backup file, only the pianos and/or programs that have been changed since the previous backup will be saved.*

#### Restore (Ctrl+R)

To restore a previously saved backup file to the Nord Electro 4D, select this option and browse to a backup file on the hard drive (file extension .ne4db) and click Open.

*The restore function will begin after you have clicked Open and confirmed your intentions in the dialogue. All the content of a connected Nord Electro 4D will then be irrevocably replaced by the content of the backup file.*

#### Clean Deleted Space

This function will clean up the space where any previously deleted pianos or programs have been. This is done in order to make this deleted memory space available to new additions.

*Cleaning is automatically done if you download a new piano or program to the Nord Electro 4D, but this menu command makes it possible to manually start the cleaning process.*

#### Format

This is a radical function; it will format the entire partition that is in focus. All the sounds in the partition will be deleted. You will be asked to confirm your intentions.

#### Exit (Ctrl+Q)

Exits the Nord Sound Manager application.

## Edit Menu

#### Rename (Ctrl+N)

This allows you to rename a Program or a Synth sound. 16 characters can be used, the supported characters are: a-z, A-Z, 0-9 and the hyphen (-). Any other characters will not be displayed in the Sound Manager lists.

Renaming also allows you to change or set the category that each program and synth sound can be labeled with.

*Pianos cannot be renamed so this function is not available if you have selected any of these.*

#### Delete

Allows you to delete a selected item(s) from the Nord Electro 4D memory. You will be asked to confirm your intentions.

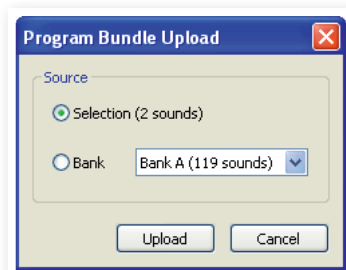
#### Replace (Ctrl+P)

This allows you to replace a selected piano or a sample with another piano or sample that you have on the computer hard drive. This will also change all programs that used that sound, to the new sound instead.

#### Relink (Ctrl+K)

Use the Relink feature if you want one or several selected programs to use another piano or sample instead of the current sound. The sound in question have to be present in the memory of the Nord unit. Relinking can also be used if a piano or sample is absent in the Nord unit, to repair the programs that are missing a component.

Sound Upload...	Ctrl+U
Sound Download...	Ctrl+D
Program Bundle Upload..	Ctrl+Shift+U
Program Bundle Download...	Ctrl+Shift+D
Backup...	Ctrl+B
Restore...	Ctrl+R
Clean Deleted Space Format	
Export Sound Lists...	
Exit	Ctrl+Q



Rename	Ctrl+N
Delete	Del
Replace...	Ctrl+P
Relink...	Ctrl+K
Select All	Ctrl+A
Invert Selection	

**Select All (Ctrl+A)**

Select all items in a bank/partition.

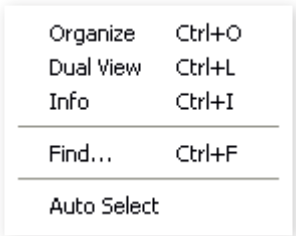
**Invert Selection**

This will deselect the original selection and then select all the other items in the list.

**View Menu**

**Organize (Ctrl+O)**

When this option is checked, the lists will show all the available locations in the selected partition/bank and not only the occupied ones. This will for instance make it easier to drag a file to a specific free location in the middle of the list. If this is unchecked, only the occupied locations will be shown.



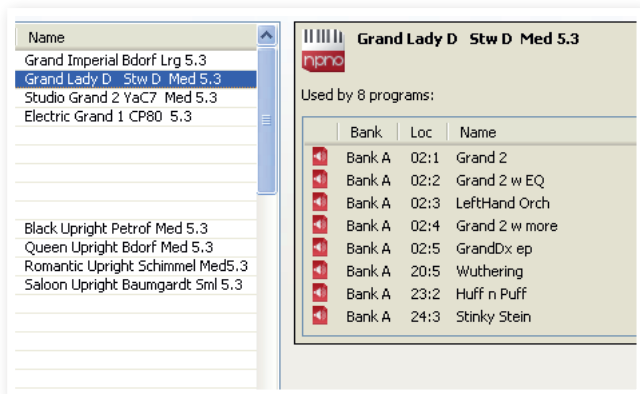
**Dual View (Ctrl+L)**

When this option is checked, the window will be divided in two lists. The two lists makes it easy to move programs from one location to another. You can make the lists show separate banks with the drop-downs. Rearranging programs is simply a matter of drag and drop. Drag a program from one bank/list to another bank/list in either direction.

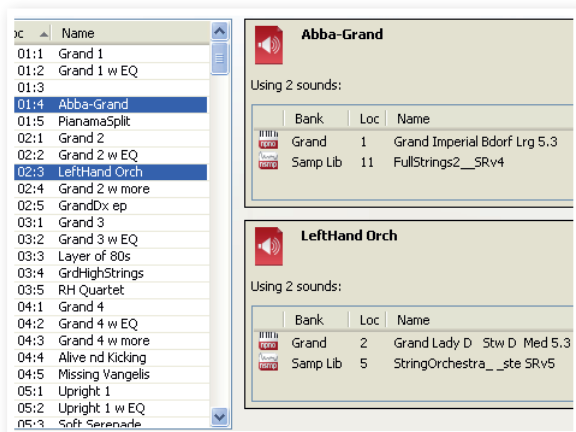
💡 Press the Ctrl-key on the computer keyboard to copy a selection to the destination during a drag and drop operation.

**Info (Ctrl+I)**

Activating Info brings up an information area to the right of the list.



This area will show if a selected piano or a sample is used in any programs, or what pianos and samples are used in any selected programs.



**Find Ctrl+F**

This is a shortcut to the Search Box. By entering one or several characters in the Search Box, you can filter out the content that is presented in the lists.

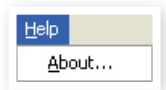
**Auto Select**

When this function is active, pianos, samples or programs will be automatically selected in the Nord Electro 4D when you browse through the sounds in the Manager list, with the computer keyboard arrow keys.

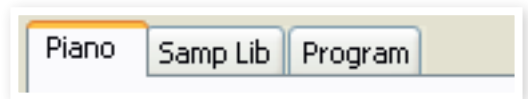
**Help**

**About**

Brings up the About box with a information regarding the version of the Nord Sound Manager. You will also see a list of compatible instruments and OS versions.



**Tabs**



**Piano – Samp Lib - Program - Synth**

Use the tabs to select the desired partition. Type Ctrl+Tab on the computer keyboard to cycle between the tabs. The drop down menu is used to select the desired bank within the partitions. The content of the partition will be presented in the list.

**Search Box**

Enter a phrase to quickly present any sounds that contains the characters. Press Clear to clear the filtering and show all entries again.

**Loc - Location**

The banks are organized in locations; the number of locations varies for the different bank types.

**Name**

The name of the item.

**Category**

Shows the assigned category for the programs.

**Size**

Shows the file size of the pianos. This may be useful if you need to know how much space e.g. a particular piano occupies in the piano partition. This unit is not shown in the program lists.

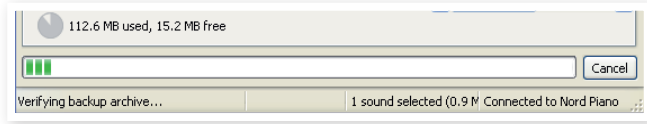
**Ver – Version Number**

This indicates the version number of the actual sound format. Older OS versions may not be able to use sounds in a more recent format.

## Note

This area may contain error information about broken, corrupted or rejected files, in the unlikely event that something has happened with a particular piano, program or sample in the Nord Electro 4D memory.

## Footer Area



The footer area is located at the bottom of the Nord Sound Manager window.

## Partition Memory Indicator

This indicates the usage of the selected partition's memory. The dark area shows the used memory and the brighter area indicates space that is available for additional sounds.

## Cancel Button

Use this function if you need to cancel a process that is in progress. Certain functions like e.g. a restore process cannot be cancelled.

## Progress Bars

The two progress bars indicate the progress of an ongoing process. The upper bar shows the progression of the individual processes, and the lower indicates the status of the entire task.

## Message/Text Area

The left part of the text area will present any confirmations or error messages from the Nord Sound Manager.

The right part will indicate if a Nord Electro 4D is connected to the computer and in communication with the Nord Sound Manager. The OS version of the connected Nord Electro 4D will also be displayed here.

## Updates and sounds

Please visit our website at <http://www.nordkeyboards.com> to download any updates of the Nord Sound Manager and sounds that have been released for the Nord Electro 4D. These items will be available as free downloads in the download area and in the Libraries area.

# 8 MIDI functions

## About the MIDI implementation

The following MIDI messages can be transmitted and received from the Nord Electro 4D:

### Note On/Off

- Note On and Note Off messages are transmitted and received.

### Controllers

In the MIDI Menu (see page 24), you can select if the Nord Electro 4D should transmit and/or receive Control Change messages.

- If you have a control pedal connected to the control pedal input, this is transmitted as Controller 11 (Expression).
- If you have a pedal connected to the sustain pedal input, this is transmitted as Controller 64 (Sustain Pedal).
- If you have a pedal connected to the rotor pedal input, this pedal is transmitted as Controller 90.
- Almost all other controls (knobs and buttons) on the front panel are also transmitted (and received) as Control Change messages. This can be used to record your actions on the front panel into a MIDI sequencer. For a full list of which parameters correspond to the Controller numbers, see the MIDI implementation on the next page.

## Keyboard velocity

The Nord Electro 4D can transmit and receive keyboard velocity messages. Organ sounds will always be played back at nominal level regardless of incoming MIDI Velocity data. Release velocity is also transmitted.

## Program change

In the MIDI Menu (see page 24), you can select if the Nord Electro 4D should send and/or receive Program Change messages.

When you select a Program, a Program Change message is transmitted via MIDI. If a Program Change message is received on the selected MIDI Channel, the Nord Electro 4D will change Program accordingly.

The 128 Program locations send and respond to MIDI Program Change values 0-127.

## MIDI Sysex (System Exclusive)

Individual Programs or all Programs can be transmitted and received as a System Exclusive dump.

## Nord Electro 4D with a sequencer

### Connections

- 1 Connect the MIDI Out on the Nord Electro 4D to the MIDI In on your sequencer.
- 2 Connect the MIDI Out from your sequencer to the MIDI In on the Nord Electro 4D.

### Local On/Off

Local Off may be used when you use a sequencer to record and play back from Nord Electro 4D. If the sequencer echoes back incoming MIDI data, the Nord Electro 4D may respond twice to every note and other message/action if for example the keyboard and the sequencer sends the same MIDI information to the unit. Local On/Off is set on the "MIDI menu" see page 18.

### MIDI Channel

The MIDI channel(s) that the Nord Electro 4D uses are set up in the MIDI menu - see "MIDI menu" on page 18. If you use the Organ model in the split/lower manual configuration, the lower manual can receive on a separate MIDI channel.

### Program Change

Usually you select a Program Change value for a track in the sequencer track settings. The 128 program locations send and respond to Program Change values 0-127.

If you want to record a Program Change message, activate recording in the sequencer and simply select the program on the Nord Electro 4D.

### Controllers

When you record actions with knobs and buttons, make sure that the sequencer "echoes" the changes back on the correct MIDI Channel, or your changes won't have any effect.

### About controllers and "chasing"

Consider a situation where you record a Controller message, e.g. a drawbar change, in the middle of your sequencer song. Then you "rewind" the sequencer to a position before the recorded drawbar change. The problem is that the Nord Electro 4D's drawbar will remain "as changed", although it really should be as it was before you recorded the opening.

To solve this, you could record a "snapshot" of all Controller settings of the Nord Electro 4D Program at the beginning of your sequencer song. See "Sending MIDI Controller dumps" on the next page.

## Program and Controller dumps

To dump a Program SysEx, or MIDI Controller data via MIDI, either to another Nord Electro 4D or for recording the data into another MIDI device, proceed as follows:

### Sending program dumps

- 1 Connect the MIDI OUT on the Nord Electro 4D to the MIDI In on the receiving device.
  - 2 Set up the receiving device to accept MIDI SysEx and MIDI Controller data.
  - 3 Press Shift + MIDI and select the “Dump One” or “Dump All” menu item using the Up/Down buttons.
  - 4 If needed, set the receiving MIDI device to “recording mode”.
  - 5 Press the Store button to send the dump to the MIDI Out of Nord Electro 4D. The display will stop flashing once the dump has been sent.
- i** *For the programs that use the organ sounds, the complete settings for the sound will be dumped as MIDI SysEx but for programs using pianos or Samples, all parameters will be sent but NOT the actual instrument samples.*

### Sending MIDI Controller dumps

- 1 Set up as in steps 1 and 2 in the preceding description.
- 2 Press Shift + MIDI and select the ‘Send CC’ menu item using the Up/Down buttons.
- 3 Press the Store button to send the dump to the MIDI Out of Nord Electro 4D. The Display will stop flashing once the dump has been sent.

### Receive MIDI SysEx dumps

Here is how to receive a MIDI SysEx Dump:

- 1 Connect the MIDI Out on the transmitting device to the MIDI IN on the Nord Electro 4D.
- 2 Initiate the transmission on the transmitting device.

If the dump contained all Programs (All), it will replace all programs currently stored in the Nord Electro 4D. If the dump contained only a single program, it will be temporarily placed in the currently selected program memory location. A dot will appear to in the lower, right corner to indicate an unsaved edit. You will then have to store the program manually to a memory location using the Store function (see “Storing a program” on page 10).

### MIDI Controller list

The following is a list of the MIDI Controller numbers used for all knobs and buttons on the front panel:

Nord Electro parameter	MIDI CC
Drawbars - Preset 2/Upper	
Drawbar 1	16
Drawbar 2	17
Drawbar 3	18
Drawbar 4	19
Drawbar 5	20
Drawbar 6	21
Drawbar 7	22
Drawbar 8	23
Drawbar 9	24
Drawbars - Preset 1/Lower	
Drawbar 1	70
Drawbar 2	71
Drawbar 3	72
Drawbar 4	73
Drawbar 5	74
Drawbar 6	75
Drawbar 7	76
Drawbar 8	77
Drawbar 9	78
Organ Model Sel	9
Preset/Manual Sel	3
Perc Decay	88
Perc Level	89
Sustain Pedal	64
Control Pedal	11
Rotary Speed	82
Rotary Stop Mode	79
Vib Mode	84
Vib On/Off UP	85
Vib On/Off LO (B3 model)	107
Perc On/Off	87
Perc Third	95
Samp Attack Sel	33
Samp Release Sel	34
Clav EQ Brill On/Off	103
Clav EQ Treble On/Off	104
Clav EQ Medium On/Off	105
Clav EQ Soft On/Off	106
Inst Sel (Organ/Piano)	13
Clav Select	45
Piano Type	12
Piano Model	44
Piano Mono	83
Acoustics	98
Oct Shift Organ Upper	27
Oct Shift Organ Lower	28
Oct Shift Piano	29
EQ On/Off	115
EQ Treble	113
EQ Mid	116
EQ Mid Freq	117
EQ Bass	114
Gain	7
Effect 1 Rate	63
Effect 1 Sel	60
Effect 1 On/Off	69
Effect 2 Rate	62
Effect 2 Sel	61
Effect 2 On/Off	80
Speaker/Comp Drive	111
Speaker/Comp Sel	81
Speaker/Comp On/Off	86
Reverb Wet/Dry	102
Reverb Sel	96
Reverb On/Off	97
Delay Rate	92
Delay Ping Pong	93
Delay On/Off	94

## MIDI Implementation Chart

Function		Transmitted	Recognized	Remarks
<b>Basic Channel</b>		1 - 16	1 - 16	
<b>Default Channel</b>		1 - 16	1 - 16	
<b>Mode</b>	Default	Mode 3	Mode 3	
	Message	X	X	
	Altered			
<b>Note</b>		0-127	0-127	
<b>Number</b>	True Voice			
<b>Velocity</b>	Note ON	O, v= 1 - 127	O, v= 1 - 127	
	Note Off	O, v= 1 - 127	O, v= 1 - 127	
<b>After</b>	Key's	X	X	
<b>Touch</b>	Channel	X	X	
<b>Pitch Bender</b>		X	X	
<b>Control Change</b>		O	O	
<b>Program Change</b>		O, 0-127	O, 0-127	
<b>True#</b>				
<b>System Exclusive</b>		O	O	
<b>System</b>	Song Pos	X	X	
	Song Sel	X	X	
	Tune	X	X	
<b>System</b>	Clock	X	X	
	Realtime	Commands	X	
<b>Aux</b>	Local on/off	X	X	
	Message	All notes off	X	
		Active Sense	X	
		Reset	X	
<b>Number</b>	True Voice			

Mode 1: Omni On, Poly - Mode 2: Omni O, Mono - Mode 3: Omni Off, Poly - Mode 4: Omni Off, Mono - O = Yes - X = No

Model: Nord Electro 4D OS v1.x Date: 2012-05-15

# 9 Index

## A

Append 24  
Auto-Panning 15  
A-Wa 15

## B

B3 11  
B3 Menu 19  
Backup 27, 28  
Balance Bass/Horn 19  
Bank Up 27  
Bass Rotor 19  
Bundle Down 27  
Bundle Up 27

## C

Cancel 30  
Chorus 15  
Clav EQ 13  
Clavinet 13  
Compressor 15  
Control Pedal 7  
Ctrl Pedal 17

## D

Delete 26, 28  
Drawbars 13  
Drawbar Speed 18

## E

Effects 10, 15  
EQ 15  
Exit 28

## F

Factory presets 4  
Farf 11  
Fine Tune 17  
Flanger 15  
Format 28

## G

Gain 16

## H

Headphones 6

## I

Info 26, 29  
Instrument 15  
Invert Selection 29

## K

Key Bounce 19  
Key Click Level 19

## L

LED 14  
Left Out 6  
Live 10  
Loc 29  
Local 18  
Lower Channel 18  
Lower Manual 12

## M

Master level 11  
Memory Protect 17  
MIDI 18  
MIDI Channel 18  
MIDI Controller list 32  
MIDI In 6  
MIDI Out 6  
MIDI Split 13, 18  
Model 14  
Monitor In 6  
Mono 14

## O

Octave Shift 10, 15  
Organ Model 11  
Organ section 11  
Organ Trig 18  
Output Routing 17

## P

Partition Memory 30  
Perc Drawbar 9 Cancel 19  
Perc. Norm Level 19  
Perc. Slow Decay 19  
Perc. Soft Level 19  
Percussion 12  
Phaser 15  
Piano 13  
Piano Type 14  
Pick-up 13  
Preset/Split 12  
Program Bundle 23, 28  
Program Change 18  
Program memory 8  
Progress 30  
P-Wa 15

## Q

Queue 23

## R

Rel 14  
Relink 21, 23, 26  
Rename 26, 28  
Replace 22, 26  
Restore 27, 28  
Reverb 16  
Ring modulator 15  
RM 15  
Rotary 15  
Rotary 122 19  
Rotary Balance 19  
Rotary Menu 19  
Rotary model 19  
Rotary Speaker Type 19  
Rotary Speed 12  
Rotor Pedal 7

## S

Samp Env 14  
Select All 29  
Shift 15  
Shift button 5  
Size 29  
Slow At 14  
Slow/Stop 12  
Soft/Fast 12  
Sound Down 27  
Sound Menu 18  
Sound Up 27  
Sound Upload 28  
Speaker/Comp 15  
Stop Mode 12  
Store 10, 14  
Sustain Pedal 7, 17  
System Menu 17

## T

Third 12  
Tonewheel crosstalk 19  
Tonewheel Mode 19  
Transfer 22  
Transpose 17  
Treble Horn 19  
Tremolo 15

## U

Up/Down 14  
Upload 23  
Upper Manual 12  
USB Connection 6

## V

Vel Dyn 14  
Vibrato/Chorus 12  
VX 11

## W

Wah-Wah 15

# FCC Information (U.S.A.)

## 1. IMPORTANT NOTICE: DO NOT MODIFY THIS UNIT!

This product, when installed as indicated in the instructions contained in this manual, meets FCC requirements. Modifications not expressly approved by Clavia may void your authority, granted by the FCC, to use the product.

**2. IMPORTANT:** When connecting this product to accessories and/ or another product use only high quality shielded cables. Cable/s supplied with this product **MUST** be used. Follow all installation instructions. Failure to follow instructions could void your FCC authorization to use this product in the USA.

**3. Note:** This equipment has been tested and found to comply with the limits for a Class B digital device, pursuant to Part 15 of the FCC Rules. These limits are designed to provide reasonable protection against harmful interference in a residential installation. This equipment generates, uses, and can radiate radio frequency energy and, if not installed and used in accordance with the instructions, may cause harmful interference to radio communications. However, there is no guarantee that interference will not occur in a particular installation. If this equipment is found to be the source of interference to radio or television reception, which can be determined by turning the equipment off and on, the user is encouraged to try to correct the interference by one or more of the following measures:

- Reorient or relocate the receiving antenna.
- Increase the separation between the equipment and receiver.
- Connect the equipment into an outlet on a circuit different from that to which the receiver is connected.
- Consult the dealer or an experienced radio/TV technician for help.

This device complies with Part 15 of the FCC Rules. Operation is subject to the following two conditions:

- (1) this device may not cause harmful interference, and
- (2) this device must accept any interference received, including interference that may cause undesired operation.

Unauthorized changes or modification to this system can void the users authority to operate this equipment.

This equipment requires shielded interface cables in order to meet FCC class B Limit.

For Canada

## NOTICE

This Class B - digital apparatus complies with Canadian ICES-003.

## AVIS

Cet appareil numérique de la classe B - est conforme à la norme NMB-003 du Canada.

## DECLARATION OF CONFORMITY Compliance Information Statement

**Model Name:** Nord Electro 4D

**Type of Equipment:** Digital Organ and piano

**Responsible Party:** Clavia DMI AB

**Address:** P.O. BOX 4214. SE-102 65 Stockholm Sweden

**Telephone:** +46-8-442 73 60

